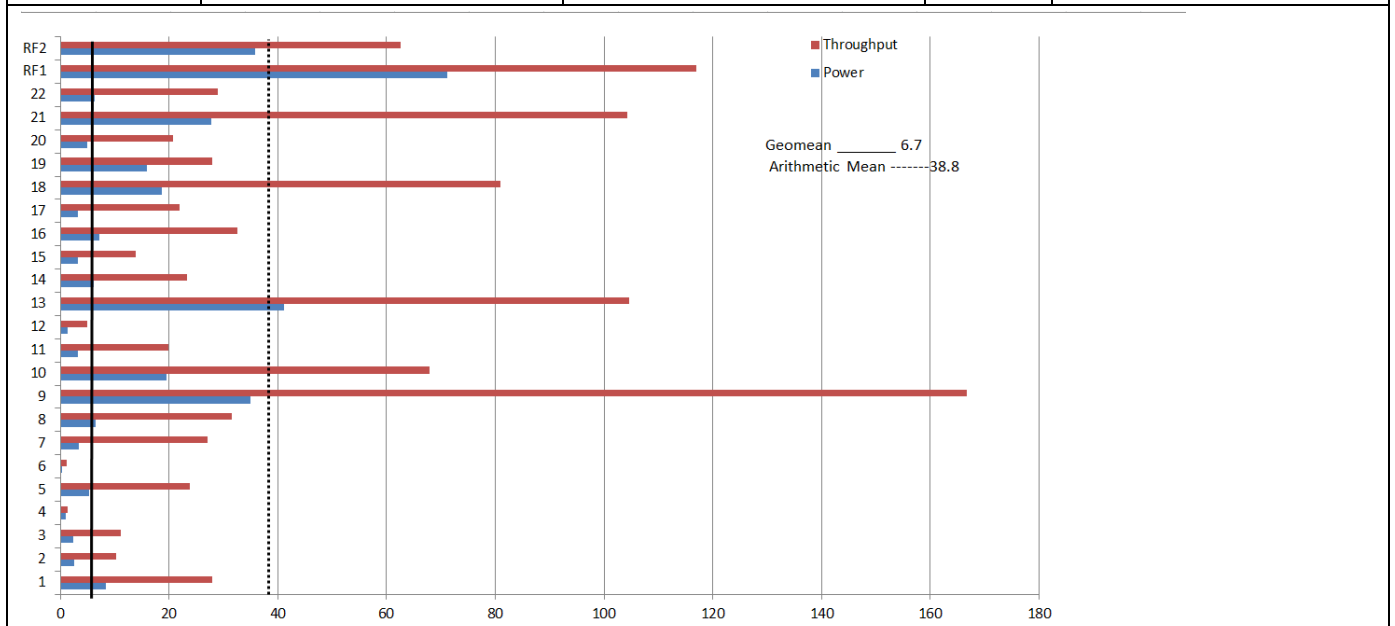
		INSPUR® K1		TPC-H Rev. 2.16.0 TPC Pricing Rev. 1.7.0
				Report Date: May 26, 2014
Total System Cost		Composite Query per Hour Metric		Price/Performance
¥ 1,955,931CNY		485,242.7_{QpH@1000 GB}		¥ 4.03CNY Price/QpH@1000GB
Database Size	Database Manager	Operating System	Other Software	Availability Date
1,000 GB	Action Vector 3.0.0	K-UX2.2	n/a	26/5/2014



Database Load Time = 13:12:22		Storage Redundancy Level	
Load Includes Backup: N		Base Tables and Auxiliary Data Structures	1
Total Data Storage / Database Size = 4.32		DBMS Temporary Space	1
Percentage Memory / Database Size = 51.2%		OS and DBMS Software	1

System Configuration	
Number of Nodes:	1
Processor/ Type:	Intel Xeon E7-8891 v2 @3.2GHz with 37.5MB L3
Proc/Cores/Threads	4/40/80
Memory:	512GB
Disk Controller:	LSI MR9271-8i Adapter with 1024MB
Disk Drives:	9 x 480GB SATA 6Gb SSD
Total Disk Storage:	4,320GB
LAN Controllers:	Intel Ethernet i350 QP 1Gb Network Daughter Card



INSPUR® K1

TPC-H Rev. 2.16.0
TPC Pricing Rev. 1.7.0

Report Date: May
26, 2014

Description	Part Number	Price Source	Unit Price	Qty	Extended Price	3 yr. Maint. Price
Server Hardware						
Inspur K1-810 chassis	GTSK1C800002	1	¥192,815	1	¥192,815	
3.2 GHz E7-8891 V2 10c CPU /37.5M Cache	BOC8891	1	¥56,942	4	¥227,768	
512GB Memory (32*16G) 1600MHz	BOM006	1	¥4,243	32	¥135,776	
Memory Riser	BOR006	1	¥9,599	8	¥76,796	
LSI CONTROLLER 9271-8i	BRE028	1	¥8,923	1	¥8,923	
480 GB 2.5 Enterprise SATA SSD	BOS073	1	¥9,500	9	¥85,503	
1000W POWER SUPPLY UNIT	BOD1000	1	¥7,691	4	¥30,763	
Inspur LCD Monitor 19"	BOV005	1	¥6,853	1	¥6,853	
Inspur USB-EN Keyboard & Mouse	BOK001、B0M001	1	¥203	1	¥203	
Inspur 42U RACK	BOG016	1	¥21,153	1	¥21,153	
ServicePac for 3-year 24 x 7 suport	BOS009	1	include	1	¥0	¥0
40% discount					¥314,621	¥0
				Subtotal	¥471,931	¥0
Server Software						
K-UX 2.1,Factory Install,IA64	X0B1T01010101001	1	¥20,000	1	¥20,000	
Vector 3.0, 1-year license, single server, up to 1 TB	VECTOR-AAD-LTD-TRM1	2	¥400,000.00	3	¥1,200,000	
Vector 1-year maintenance bug fixes	VECTOR-AAD-LTD-TRM -MNT	2	¥88,000.00	3	¥264,000	
				Subtotal	¥1,484,000	¥0
				Total	¥1,955,931	¥0
Price Source: 1=Inspur Order method: 800-860-6708 or 86 0531-85105430 2=Actian Order method: Jason.Leonidas@actian.com				Three-Year Cost of Ownership : ¥1,955,931 QphH@1000G: 485,242.7 ¥/ QphH@1000G: ¥4.03		
Audited by Francois Raab of InfoSizing, inc (www.sizing.com)						
Prices used in TPC benchmarks reflect the actual prices a customer would pay for a one-time purchase of the stated components. Individually negotiated discounts are permitted. Special prices based on assumptions about past or future purchase are not permitted. All discounts reflect standard pricing policies for the list components. For complete details, see the pricing sections of the TPC benchmark specifications. If you find that the stated prices are not available according to these items, please inform the TPC at pricing@tpc.org						



INSPUR® K1

TPC-H Rev. 2.16.0
TPC Pricing Rev. 1.7.0
Report Date: May 26,2014

Measurement Results

Total Data Storage/Database Size	4.32
Percentage Memory/Database Size	51.2%
Start of Database Load Time	2014/4/11 20:00:44
End of Database Load Time	2014/4/12 09:13:06
Database Load Time	13:12:22
Query Streams for Throughput Test (S)	7
TPC-H Power @1000 GB	534,288.1
TPC-H Throughput @1000 GB	440,699.5
TPC-H Composite @1000 GB	485,242.7
Total System Price Over 3 Years	¥1,955,931
TPC-H Price/Performance Metrics (¥/QphH@1000 GB)	¥4.03

Measurement Interval in Throughput Test (Ts) 1,258

Power Run	Seed	Query Start Time	Duration	RF1 Start Time	RF2 Start Time
		Query End Time	(sec)	RF1 End Time	RF2 End Time
	412091306	2014-04-12 10:05:18	00 00:03:44	2014-04-10 06:34:52	2014-04-10 06:38:02
		2014-04-12 10:09:02	224	2014-04-10 06:35:28	2014-04-10 06:38:30

Throughput Stream	Seed	Query Start Time	Duration	RF1 Start Time	RF2 Start Time
		Query End Time	(sec)	RF1 End Time	RF2 End Time
1	412091307	2014-04-12 10:09:40	00 00:16:43	2014-04-12 10:09:39	2014-04-12 10:12:01
		2014-04-12 10:26:23	1,003	2014-04-12 10:12:01	2014-04-12 10:13:11
2	412091308	2014-04-12 10:09:39	00 00:12:39	2014-04-12 10:13:11	2014-04-12 10:15:00
		2014-04-12 10:22:18	759	2014-04-12 10:15:00	2014-04-12 10:15:45
3	412091309	2014-04-12 10:09:40	00 00:15:29	2014-04-12 10:15:45	2014-04-12 10:17:19
		2014-04-12 10:25:09	929	2014-04-12 10:17:19	2014-04-12 10:18:39
4	412091310	2014-04-12 10:09:39	00 00:18:06	2014-04-12 10:18:39	2014-04-12 10:20:51
		2014-04-12 10:27:45	1,086	2014-04-12 10:20:51	2014-04-12 10:22:18
5	412091311	2014-04-12 10:09:39	00 00:10:04	2014-04-12 10:22:18	2014-04-12 10:25:10
		2014-04-12 10:19:43	604	2014-04-12 10:25:10	2014-04-12 10:26:14
6	412091312	2014-04-12 10:09:39	00 00:12:39	2014-04-12 10:26:14	2014-04-12 10:27:47
		2014-04-12 10:22:18	759	2014-04-12 10:27:47	2014-04-12 10:28:31
7	412091313	2014-04-12 10:09:40	00 00:13:57	2014-04-12 10:28:31	2014-04-12 10:29:51
		2014-04-12 10:23:37	837	2014-04-12 10:29:51	2014-04-12 10:30:37



INSPUR® K1

TPC-H Rev. 2.16.0
TPC Pricing Rev. 1.7.0
Report Date: May 26,2014

TPC-H Timing Intervals (in seconds)

Duration of query execution:

Stream ID	Q1	Q2	Q3	Q4	Q5	Q6	Q7	Q8	Q9	Q10	Q11	Q12
0	8.3	2.5	2.4	0.9	5.3	0.4	3.4	6.5	35.0	19.6	3.2	1.3
1	8.0	6.6	5.3	0.9	17.7	1.1	37.6	9.9	71.7	82.2	24.5	5.7
2	23.1	3.3	4.8	1.6	10.4	0.5	89.2	30.9	138.6	46.2	36.1	5.1
3	35.5	28.6	27.6	1.2	46.2	1.3	20.8	93.0	127.2	65.7	8.2	3.4
4	26.4	14.9	2.4	2.0	38.8	1.4	6.7	21.5	464.3	72.3	29.2	4.0
5	27.7	2.9	3.2	1.4	11.7	1.3	11.8	23.7	144.1	64.5	22.3	5.6
6	52.7	11.3	25.5	1.5	15.7	1.5	12.6	18.6	110.7	68.3	11.2	7.3
7	22.0	4.2	8.7	1.3	26.5	0.9	11.3	22.9	110.1	76.3	7.1	3.1
Min	8.0	2.5	2.4	0.9	5.3	0.4	3.4	6.5	35.0	19.6	3.2	1.3
Avg	25.5	9.3	10.0	1.4	21.5	1.1	24.2	28.4	150.2	61.9	17.7	4.4
Max	52.7	28.6	27.6	2.0	46.2	1.5	89.2	93.0	464.3	82.2	36.1	7.3
Stream ID	Q13	Q14	Q15	Q16	Q17	Q18	Q19	Q20	Q21	Q22	RF1	RF2
0	41.2	6.2	3.3	7.1	3.3	18.6	15.9	4.9	27.8	6.3	71.1	35.9
1	122.4	22.0	4.9	47.4	14.7	53.4	13.9	22.8	398.9	30.1	141.0	70.6
2	94.8	9.9	6.4	23.2	32.0	63.0	28.7	29.0	46.7	34.5	108.5	45.1
3	96.2	15.8	8.4	10.8	15.8	172.5	33.8	8.4	87.6	20.4	94.1	80.2
4	64.7	46.2	11.7	58.8	27.2	29.0	26.5	38.5	55.0	43.1	131.2	87.3
5	89.6	11.5	3.8	22.3	14.3	46.2	24.8	10.0	28.8	31.5	171.9	64.7
6	115.1	31.2	46.2	32.1	20.4	45.1	41.2	12.1	55.1	21.9	92.1	44.1
7	149.1	26.3	16.1	33.2	29.4	156.9	27.1	24.9	58.2	20.9	79.8	46.6
Min	41.2	6.2	3.3	7.1	3.3	18.6	13.9	4.9	27.8	6.3	71.1	35.9
Avg	96.6	21.1	12.6	29.4	19.6	73.1	26.5	18.8	94.8	26.1	111.2	59.3
Max	149.1	46.2	46.2	58.8	32.0	172.5	41.2	38.5	398.9	43.1	171.9	87.3