



# Inspur NF8380M5

TPC-H Rev. 2.17.3  
 TPC Pricing Rev. 2.3.0

Report Date:  
 October 1, 2018

Total System Cost

Composite Query per Hour Rating

Price/Performance

**\$825,114**

**1,100,113.5**  
 QpH @ 10,000GB

**\$0.76 USD**  
 \$ / QpH @10,000GB

Database Size

Database Manager

Operating System

Other Software

Availability Date

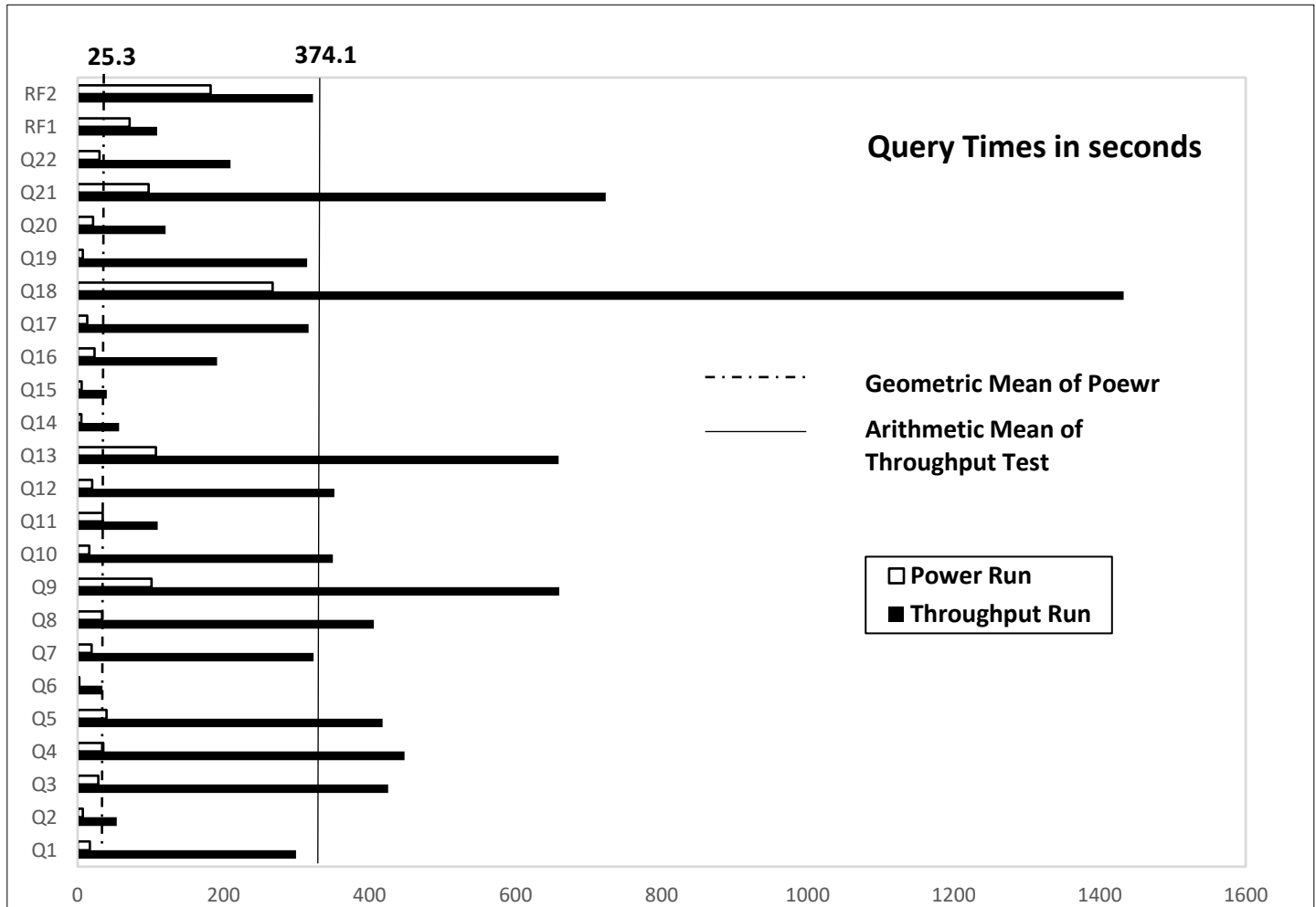
10000GB

Microsoft®  
 SQL Server 2017  
 Enterprise Edition

Microsoft®  
 Windows Server 2016  
 Standard Edition

None

December 2018



Database Load Time = 00d 05h 58m 13s

Storage Redundancy Level

Load included backup: **Y**

Base Tables and Auxiliary Data Structures

**No RAID**

Total Data Storage / Database Size = **3.71**

DBMS Temporary Space

**No RAID**

Memory/Database Size = **30.7%**

OS and DBMS Software

**No RAID**

**System Components**

**System Total**

**Per Node**

Nodes:	1	n.a.
Intel(R) Xeon(R) Platinum 8168 @ 2.70GHz:	4	4
Cores/Threads:	96/192	96/192
Memory:	3,072GB	3,072GB
Network Interfaces (40G NIC):	1	1
Storage PCIe4 NVMe 960GB M.2 SSD:	39	39

Total Storage 37,073 GB

n.a



# Inspur NF8380M5

TPC-H Rev. 2.17.3  
 TPC Pricing Rev. 2.3.0

Report Date:  
 October 1, 2018

Description	Price Key	Part Number	Unit Price	Qty	Extended Price	3 Yr Maint Price
<b>Server Hardware</b>						
Inspur NF8380M5 Server (Customer to Order), Includes:	1	N/A	\$248,227.00	1		
Intel® Xeon® Platinum 8168 (2.70GHz/24-core)	1	V001033000000000	Included	4		
SK Hynix 64G DDR4-2666LR	1	V00402L000000000	Included	48		
960G PCIex4 NVMe M.2 SSD (For OS)	1	V0230SM000000000	Included	1		
Inspur Standard 3 Year Warranty	1	N/A	Included	1		
Monitor, Keyboard And Mouse Bundle	1	N/A	Included	1		
42U Standard 19 inch Rack	1	N/A	Included	1		
<b>Server Storage</b>						
Inspur HHHL M.2 riser card	1	YZRI-01201-101	Included	9		
960G PCIex4 NVMe M.2 SSD	1	V0230SM000000000	Included	38		
<b>Subtotal</b>					<b>\$248,227.00</b>	
<b>Server Software</b>						
SQL Server 2017 Enterprise Edition for Windows (2 core license, 24 cores)	2	N/A	\$13,472.50	48	\$646,680.00	Included
Windows Server 2016 Standard Edition	2	N/A	\$92.00	48	\$4,416.00	Included
Microsoft Problem Resolution Services	2	N/A	\$259.00	1		\$259.00
<b>Subtotal</b>					<b>\$651,096.00</b>	
<b>Total Extended Price</b>					<b>\$899,582.00</b>	
<b>Total Discounts</b>					<b>\$74,468.10 Included</b>	
Price Key: 1 - Inspur , 2 - Microsoft <b>Audited by Francois Raab of InfoSizing</b> <b>(www.sizing.com)</b>		<b>Grand Total</b>			<b>\$825,113.90</b>	
All discounts are based on US list prices and for similar quantities and configurations. A 30% discount was based on the overall specific components pricing from vendor 1 in this single quotation. Discounts for similarly sized configurations will be similar to those quoted here but may vary based on the components in the configuration.		<b>3 year cost of ownership USD:</b>				<b>\$825,114.00</b>
		<b>QpH @ 10000GB:</b>				<b>1,100,113.5</b>
		<b>\$ USD/QpH @ 10000GB</b>				<b>\$0.76</b>
Sales contact: Inspur Systems Inc, 47451 Fremont Blvd, Fremont, CA 94538 (800) 697-5893 Microsoft Corporation, One Microsoft Way, Redmond, WA 98052-6399 (425) 882 8080						
Prices used in TPC benchmarks reflect the actual prices a customer would pay for a one-time purchase of the stated components. Individually negotiated discounts are not permitted. Special prices based on assumptions about past or future purchases are not permitted. All discounts reflect standard pricing policies for the listed components. For complete details, see the pricing sections of the TPC benchmark specifications. If you find that the stated prices are not available according to these terms, please inform at pricing@tpc.org. Thank you.						



# Inspur NF8380M5

TPC-H Rev. 2.17.3  
 TPC Pricing Rev. 2.3.0

Report Date:  
 October 1, 2018

## Numerical Quantities

### Measurement Results

Database Scale Factor	10,000
Total Data Storage / Database Size	3.71
Percentage Memory / Database Size	30.7%
Start of Database Load	2018-9-26 14:04:55
End of Database Load	2018-9-26 20:03:08
Database Load Time	00d 05h 58m 13s
Query Streams for Throughput Test	9
TPC-H Power	1,423,843
TPC-H Throughput	849,988.1
TPC-H Composite Query-per-Hour (QphH@10000GB)	1,100,113.5
Total System Price over 3 Years (\$ USD)	\$825,114
TPC-H Price/Performance Metric (\$ USD / QphH@10000GB)	\$0.76

### Measurement Interval

Measurement Interval in Throughput Test	8,386 seconds
---	---------------

### Duration of Stream Execution

Power Run	Seed	Query Start Time	Duration (sec)	RF1 Start Time	RF2 Start Time
		Query End Time		RF1 End Time	RF2 End Time
	926200308	2018-09-26 23:13:37	00 00:16:41	2018-09-26 23:12:28	2018-09-26 23:30:20
		2018-09-26 23:30:18	1,001	2018-09-26 23:13:35	2018-09-26 23:33:38
Throughput Stream	Seed	Query Start Time	Duration (sec)	RF1 Start Time	RF2 Start Time
		Query End Time		RF1 End Time	RF2 End Time
1	926200309	2018-09-26 23:33:37	00 02:12:02	2018-09-26 23:33:37	2018-09-26 23:35:16
		2018-09-27 01:45:39	7,922	2018-09-26 23:35:16	2018-09-26 23:40:45
2	926200310	2018-09-26 23:33:37	00 02:19:40	2018-09-26 23:40:46	2018-09-26 23:42:31
		2018-09-27 01:53:17	8,380	2018-09-26 23:42:31	2018-09-26 23:46:32
3	926200311	2018-09-26 23:33:37	00 02:17:59	2018-09-26 23:46:33	2018-09-26 23:49:22
		2018-09-27 01:51:36	8,279	2018-09-26 23:49:22	2018-09-26 23:53:36
4	926200312	2018-09-26 23:33:37	00 02:19:46	2018-09-26 23:53:36	2018-09-26 23:56:12
		2018-09-27 01:53:23	8,386	2018-09-26 23:56:12	2018-09-27 00:00:57
5	926200313	2018-09-26 23:33:37	00 02:16:55	2018-09-27 00:00:57	2018-09-27 00:02:39
		2018-09-27 01:50:32	8,215	2018-09-27 00:02:39	2018-09-27 00:07:30
6	926200314	2018-09-26 23:33:37	00 02:14:26	2018-09-27 00:07:31	2018-09-27 00:10:48
		2018-09-27 01:48:03	8,066	2018-09-27 00:10:48	2018-09-27 00:15:42
7	926200315	2018-09-26 23:33:37	00 02:19:02	2018-09-27 00:15:42	2018-09-27 00:17:27
		2018-09-27 01:52:39	8,342	2018-09-27 00:17:27	2018-09-27 00:24:27
8	926200316	2018-09-26 23:33:37	00 02:19:04	2018-09-27 00:24:28	2018-09-27 00:26:14
		2018-09-27 01:52:41	8,344	2018-09-27 00:26:14	2018-09-27 00:32:33
9	926200317	2018-09-26 23:33:37	00 02:15:53	2018-09-27 00:32:33	2018-09-27 00:34:01
		2018-09-27 01:49:30	8,153	2018-09-27 00:34:01	2018-09-27 00:39:02



# Inspur NF8380M5

TPC-H Rev. 2.17.3  
TPC Pricing Rev. 2.3.0

Report Date:  
October 1, 2018

## TPC-H Timing Intervals (in seconds):

Query	Stream 0	Stream 1	Stream 2	Stream 3	Stream 4	Stream 5	Stream 6	Stream 7	Stream 8	Stream 9	Min Qi	Max Qi	Avg. Qi
Q1	15.8	324.5	88.3	453.9	273.2	177.0	156.2	93.1	221.2	343.7	15.8	214.7	453.9
Q2	11.3	44.8	55.4	47.2	59.8	42.9	70.4	49.3	67.1	58.8	11.3	50.7	70.4
Q3	27.7	519.0	625.3	431.9	401.2	668.8	592.1	586.9	188.0	232.7	27.7	427.4	668.8
Q4	34.1	232.3	453.0	530.0	547.8	529.6	359.8	478.6	739.7	491.7	34.1	439.7	739.7
Q5	37.1	488.7	500.5	547.9	240.1	638.7	512.4	404.6	387.1	262.4	37.1	402.0	638.7
Q6	1.0	54.9	5.9	53.7	38.9	42.9	23.1	48.6	41.8	30.1	1.0	34.1	54.9
Q7	17.8	258.0	130.3	380.1	248.1	380.8	329.6	522.5	424.5	471.5	17.8	316.3	522.5
Q8	29.9	549.0	401.4	207.4	216.9	419.5	321.0	351.3	551.5	436.7	29.9	348.5	551.5
Q9	208.0	633.4	556.1	677.1	870.1	479.7	568.2	988.1	654.3	744.3	208.0	637.9	988.1
Q10	16.7	249.3	431.5	499.6	682.0	351.2	109.3	246.5	556.1	666.0	16.7	380.8	682.0
Q11	34.1	161.5	86.8	96.0	149.5	192.5	186.3	97.0	68.3	129.9	34.1	120.2	192.5
Q12	11.5	222.5	807.4	224.8	426.9	362.9	329.2	132.8	469.5	408.2	11.5	339.6	807.4
Q13	104.4	734.8	677.1	806.0	667.0	450.5	586.4	718.9	544.8	478.1	104.4	576.8	806.0
Q14	6.0	23.2	18.3	24.9	103.0	28.1	68.2	19.7	68.6	98.6	6.0	45.9	103.0
Q15	5.9	41.2	57.1	48.6	60.8	41.7	44.1	28.8	13.0	28.6	5.9	37.0	60.8
Q16	23.4	166.1	370.5	355.8	193.7	279.9	235.6	153.9	159.5	163.3	23.4	210.2	370.5
Q17	10.2	540.8	235.8	138.4	412.9	399.4	427.8	706.9	491.9	356.5	10.2	372.1	706.9
Q18	251.0	1,412.4	1,511.9	1,624.0	1,285.5	1,493.8	1,754.7	1,548.0	1,539.0	1,375.2	251.0	1,379.6	1,754.7
Q19	5.5	323.9	343.0	140.5	206.8	461.2	327.8	199.8	11.7	113.0	5.5	213.3	461.2
Q20	21.0	109.5	150.5	107.9	36.7	80.7	132.1	124.6	186.3	146.5	21.0	109.6	186.3
Q21	95.6	555.9	575.1	613.6	1,101.1	555.6	683.2	660.7	775.9	919.0	95.6	653.6	1,101.1
Q22	31.6	275.7	298.0	269.2	163.6	136.3	248.0	180.8	183.3	197.2	31.6	198.4	298.0
RF1	67.3	98.7	105.8	169.7	155.6	102.2	197.2	104.3	106.2	87.8	67.3	119.5	197.2
RF2	197.5	328.9	240.9	253.3	285.0	291.1	294.2	420.6	378.8	301.5	197.5	299.2	420.6