



# HP ProLiant DL580 G8

TPC-H Rev. 2.16.1  
 TPC Pricing Rev. 1.7.0

Report Date:  
 April 15, 2014

Total System Cost

Composite Query per Hour Rating

Price/Performance

**\$941,435 USD**

**461,837.8**

**\$2.04 USD**

QphH @ 3000GB

\$/ QphH @3000GB

Database Size

Database Manager

Operating System

Other Software

Availability Date

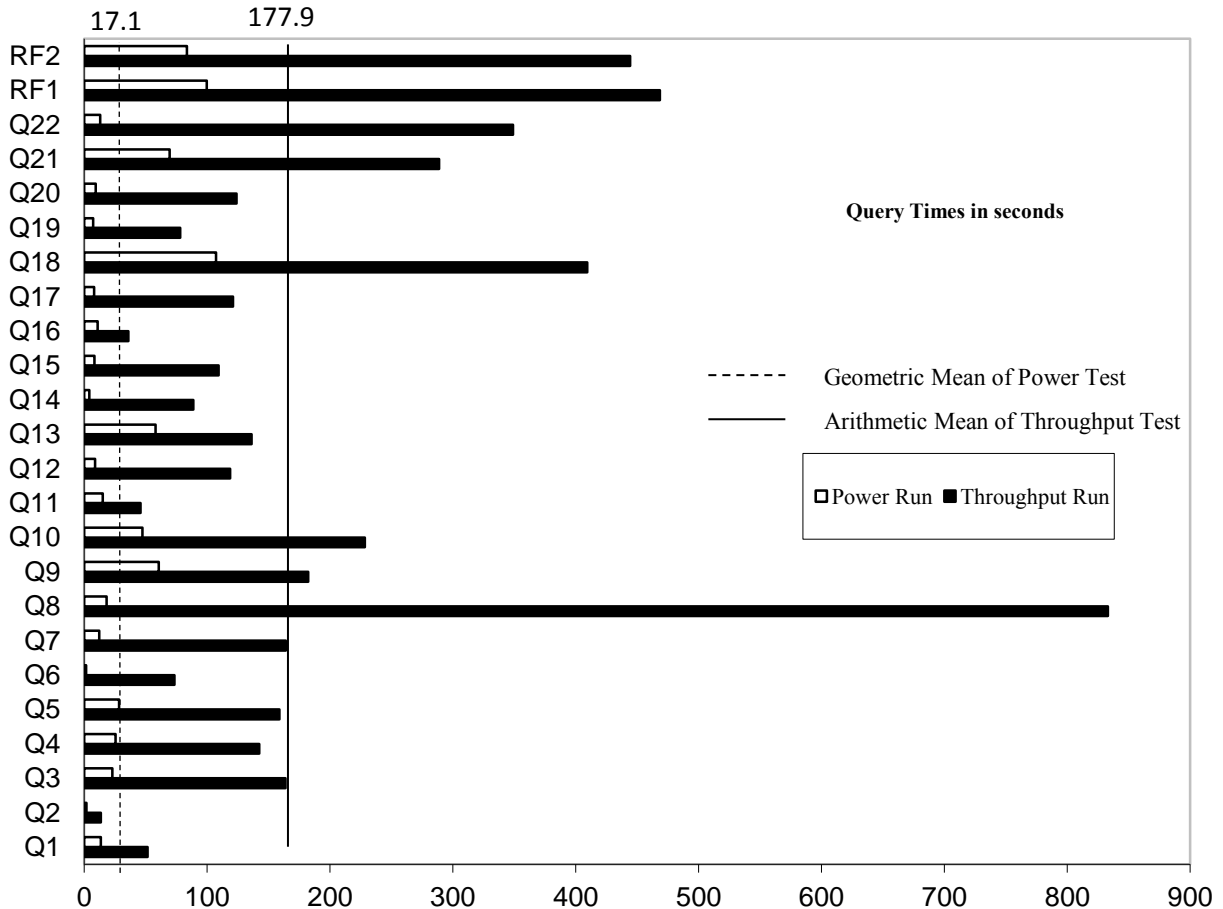
3000GB

SQL Server 2014  
 Enterprise Edition

Windows Server 2012  
 R2 Standard Edition

None

Now



Database Load Time = 01d 04h 13m 02s

Storage Redundancy Level

Load included backup: Y

Base Tables and Auxiliary Data Structures

0

Total Data Storage / Database Size = 50.4

DBMS Temporary Space

0

Memory/Database Size = 102.4%

OS and DBMS Software

1

**System Components**

**System Total**

**Per Node**

Nodes:	1	n.a.
Intel(R) Xeon(R) CPU E7-4890v2 @ 2.80GHz:	4	4
Cores/Threads:	60/120	60/120
Memory:	3072GB	3072GB
OS Disk Drives(internal)(300GB 6G SAS 15K each):	2	2
Network Interfaces (on-board GigE):	2	2
Storage Controllers HP 16Gb Dual FC:	9	9
MSA 2040 FC:	9	9
Storage Shelves D2700:	18	18
Storage Subsystem Disk Drives (Qty 56:146GB 6G SAS 15K):	528	n.a.
(Qty 472: 300GB 6G SAS 15K):		
Total Storage:	151,276 GB	n.a.



# HP ProLiant DL580 G8

TPC-H Rev. 2.16.1  
TPC Pricing Rev. 1.7.0

Report Date: April 15, 2014

Description	Price Key	Part Number	Unit Price	Qty.	Extended Price	3 Yr Maint Price
<b>Server Hardware</b>						
HP ProLiant DL580 G8	1	728551-B21	\$4,999	1	\$4,999	
HP DL580 G8 E7-4890v2 FIO processor Kit	1	728955-L21	\$8,749	1	\$8,749	
HP DL580 G8 E7-4890v2 Processor Kit	1	728955-B21	\$8,749	3	\$26,247	
HP 32GB 4Rx4 PC3-14900L-13 Kit	1	708643-B21	\$999	96	\$95,904	
HP DL580 Gen8 12 DIMM Slots Memory Cartridge	1	732411-B21	\$499	8	\$3,992	
HP 2G FIO Flash Backed Write Cache	1	758836-B21	\$549	1	\$549	
HP 1200W Common Slot Hot Plug Power Supply Kit	1	656364-B21	\$429	4	\$1,716	
HP 300GB 6G SAS 15K 2.5inch DP Enterp 3-yr warrant	1	652611-B21	\$545	5	\$2,725	
HP 3y 4h 24x7 ProLiant D58x HW Support	1	U4608E	\$2,044	1		\$2,044
HP 17" FlatPanel Monitor	1	GV537A8	\$130	3	\$390	
HP PS/2 Keyboard And Mouse Bundle	1	RC464AA	\$39	3	\$117	
<b>Subtotal</b>					<b>\$145,388</b>	<b>\$2,044</b>
<b>Storage</b>						
HP Universal Rack 10642 G2 Shock Rack	1	AF002A	\$1,489	2	\$2,978	
HP 24A High Voltage US/JP Modular PDU	1	252663-D72	\$299	2	\$598	
HP MSA 2040 SAN Dual Controller SFF Storage	1	C8R15A	\$11,070	9	\$99,630	
HP MSA 2040 SAN Dual Controller SFF Storage (10% Spares)	1	C8R15A	\$11,070	2	\$22,140	
HP MSA 2040 16Gb SW FC SFP 4 Pk	1	C8R24A	\$1,600	5	\$8,000	
HP MSA 300GB 6G SAS 15K 2.5-inch DP Ent 3-yr warranty	1	C8S61A	\$649	192	\$124,608	
HP MSA 300GB 6G SAS 15K 2.5-inch DP Ent 3-yr warranty	1	C8S61A	\$649	20	\$12,980	
HP StorageWorks D2700 Disk Enclosure	1	AJ941A	\$3,399	18	\$61,182	
HP StorageWorks D2700 Disk Enclosure (10% Spares)	1	AJ941A	\$3,399	2	\$6,798	
HP 300GB 6G SAS 15K 2.5-inch DP Enterprise 3-yr warrant	1	652611-B21	\$649	280	\$181,720	
HP 300GB 6G SAS 15K 2.5-inch DP Enterprise 3-yr warrant	1	652611-B21	\$649	28	\$18,172	
HP 146GB 6G SAS 15K 2.5-inch DP Enterprise 3-yr warrant	1	512547-B21	\$369	56	\$20,664	
HP 146GB 6G SAS 15K 2.5-inch DP Enterprise 3-yr warrant	1	512547-B21	\$369	6	\$2,214	
HP 2m Multi-mode OM3 LC/LC FC Cable	1	627117-B21	\$75	18	\$1,350	
HP StoreFabric SN1000Q 16GB 2-port PCIe FC HBA	1	QW972A	\$2,799	9	\$25,191	
HP StoreFabric SN1000Q 16GB 2-port PCIe FC HBA(10% sp)	1	QW972A	\$2,799	2	\$5,598	
<b>Subtotal</b>					<b>\$593,823</b>	
<b>Server Software</b>						
SQL Server 2014 Enterprise Edition	2	7JQ-00750	\$13,473	30	\$404,175	
Windows Server 2012 R2 Standard Edition	2	P73-06284	\$735	2	\$1,470	
Windows Server 2012 R2 Client Access License	2	R18-04280	\$24	80	\$1,948.80	
Microsoft Problem Resolution Services	2	N/A	\$259	1		\$259
<b>Subtotal</b>					<b>\$407,837</b>	<b>\$259</b>
<b>Total Extended Price</b>					<b>\$1,146,805</b>	<b>\$2,303</b>
<b>Total Discounts</b>					<b>\$206,979</b>	<b>\$572</b>
<b>Grand Total</b>					<b>\$939,826</b>	<b>\$1,731</b>
Price Key: 1 - HP , 2 - Microsoft Audited by Francois Raab of InfoSizing, Inc. (www.sizing.com)		<b>3 year cost of ownership USD:</b>			<b>\$941,557</b>	
All discounts are based on US list prices and for similar quantities and configurations. A 28% discount was based on the overall specific components pricing from vendor 1 in this single quotation. Discounts for similarly sized configurations will be similar to those quoted here, but may vary based on the components in the configuration.		<b>QpH @ 3000GB:</b>			<b>461,837.8</b>	
		<b>\$ USD/QpH @ 3000GB</b>			<b>\$2.04</b>	
Sales contact: HP Sales Development, 19111 Pruneridge Ave., Cupertino, CA 95014 (408) 447 2320 or H-P direct: 800-203-6748						
Prices used in TPC benchmarks reflect the actual prices a customer would pay for a one-time purchase of the stated components. Individually negotiated discounts are not permitted. Special prices based on assumptions about past or future purchases are not permitted. All discounts reflect standard pricing policies for the listed components. For complete details, see the pricing sections of the TPC benchmark specifications. If you find that the stated prices are not available according to these terms, please inform at pricing@tpc.org. Thank you.						