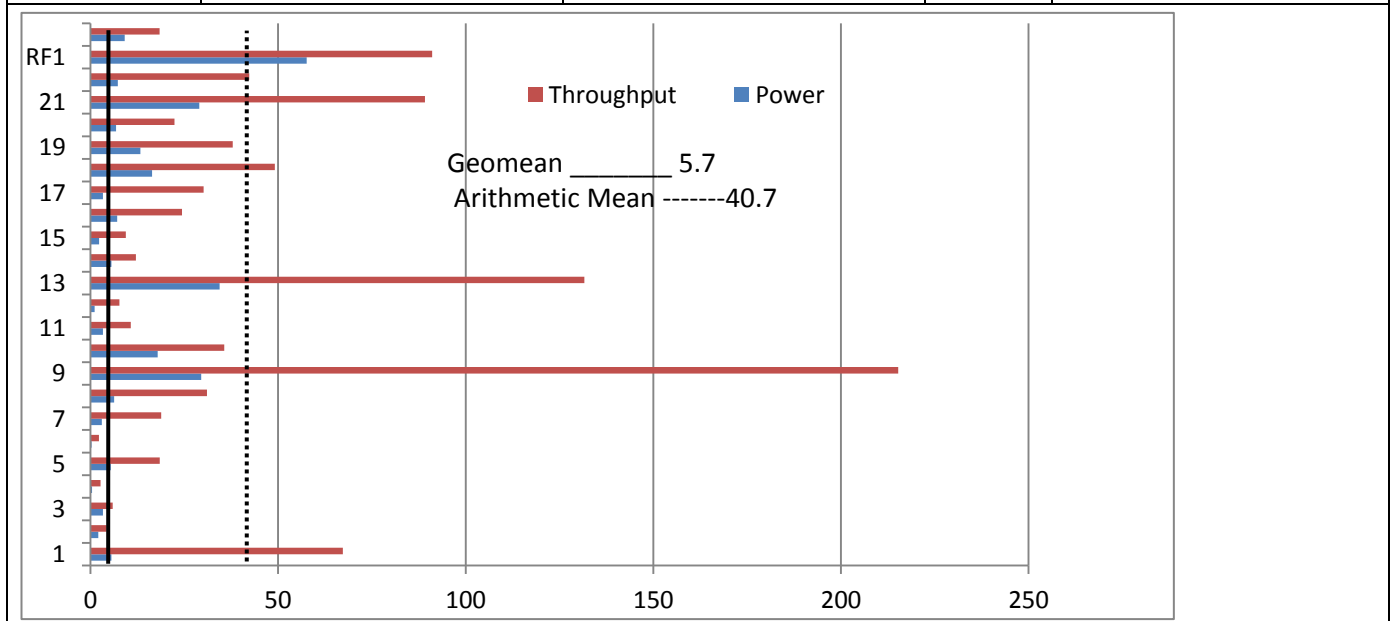
		<b>INSPUR® K1-810</b>		<b>TPC-H Rev. 2.17.0</b> <b>TPC Pricing Rev. 1.7.0</b>
				<b>Report Date: Aug 21, 2014</b>
<b>Total System Cost</b>		<b>Composite Query per Hour Metric</b>		<b>Price/Performance</b>
<b>¥1,996,651CNY</b>		<b>585,319<sub>QphH@1000 GB</sub></b>		<b>¥3.42CNY</b> <b>Price/QphH@1000GB</b>
<b>Database Size</b>	<b>Database Manager</b>	<b>Operating System</b>	<b>Other Software</b>	<b>Availability Date</b>
<b>1,000 GB</b>	<b>Action Analytics Database – Vector 3.5.1</b>	<b>K-UX2.2</b>	<b>n/a</b>	<b>21/8/2014</b>



<b>Database Load Time = 08:14:20</b>		<b>Storage Redundancy Level</b>	
<b>Load Includes Backup: N</b>		<b>Base Tables and Auxiliary Data Structures</b>	<b>1</b>
<b>Total Data Storage / Database Size = 4.32</b>		<b>DBMS Temporary Space</b>	<b>1</b>
<b>Percentage Memory / Database Size = 102.4%</b>		<b>OS and DBMS Software</b>	<b>0</b>

<b>System Configuration</b>	
<b>Number of Nodes:</b>	<b>1</b>
<b>Processor/ Type:</b>	<b>Intel Xeon E7-8891 v2 @3.2GHz with 37.5MB L3</b>
<b>Proc/Cores/Threads</b>	<b>4/40/80</b>
<b>Memory:</b>	<b>1024GB</b>
<b>Disk Controller:</b>	<b>LSI MR9271-8i Adapter with 1024MB</b>
<b>Disk Drives:</b>	<b>9 x 480GB SATA 6Gb SSD</b>
<b>Total Disk Storage:</b>	<b>4,320GB</b>
<b>LAN Controllers:</b>	<b>Intel Ethernet i350 QP 1Gb Network Daughter Card</b>



# INSPUR® K1-810

TPC-H Rev. 2.17.0  
 TPC Pricing Rev. 1.7.0  
 Report Date: Aug 21, 2014

Description	Part Number	Price Source	Unit Price	Qty	Extended Price	3 yr. Maint. Price
Inspur K1-810 chassis	GTSK1C800002	1	¥192,815	1	¥192,815	
3.2 GHz E7-8891 V2 10c CPU /37.5M Cache	BOC8891	1	¥56,942	4	¥227,768	
1024GB Memory (32*32G) 1600MHz	BOM007	1	¥6,364	32	¥203,648	
Memory Riser	BOR006	1	¥9,599	8	¥76,792	
LSI CONTROLLER 9271-8i	BRE028	1	¥8,923	1	¥8,923	
480 GB 2.5 Enterprise SATA SSD	BOS073	1	¥9,500	9	¥85,500	
1000W POWER SUPPLY UNIT	BOD1000	1	¥7,691	4	¥30,764	
Inspur LCD Monitor 19``	BOV005	1	¥6,853	1	¥6,853	
Inspur USB-EN Keyboard & Mouse	BOK001、BOM001	1	¥203	1	¥203	
Inspur 42U RACK	BOG016	1	¥21,153	1	¥21,153	
ServicePac for 3-year 24 x 7 suport	BOS009	1	include	1	¥0	¥0
40% discount					¥-341,768	¥0
				Subtotal	¥512,651	¥0
<b>Server Software</b>						
K-UX 2.2,Factory Install,IA64	X0B1T01010101001	1	¥20,000	1	¥20,000	
Action Analytics Database - Vector - Limited (Up to 2 TB)	VECTOR-AAD-LTD-PPL	2	¥870,000	1	¥870,000	
Analytics DB - Vector - Limited (Up to 2 TB) Gold Tech Sup	VECTOR-AAD-LTD-PPL-GOLD-MNT	2	¥198,000	3	¥594,000	
				Subtotal	¥1,484,000	¥0
				Total	¥1,996,651	¥0

Price Source: 1=Inspur Order method: 800-860-6708 or 86 0531-85105430 2=Actian Order method: Jason.Leonidas@actian.com	Three-Year Cost of Ownership:	¥1,996,651
	QphH@ 1000G:	585,319.0
	¥ / QphH@ 1000G:	¥3.42

**Audited by Francois Raab of InfoSizing, inc (www.sizing.com)**

Prices used in TPC benchmarks reflect the actual prices a customer would pay for a one-time purchase of the stated components. Individually negotiated discounts are permitted. Special prices based on assumptions about past or future purchase are not permitted. All discounts reflect standard pricing policies for the list components. For complete details, see the pricing sections of the TPC benchmark specifications. If you find that the stated prices are not available according to these items, please inform the TPC at pricing@tpc.org



INSPUR® K1-810

TPC-H Rev. 2.17.0  
TPC Pricing Rev. 1.7.0

Report Date: Aug  
21, 2014

**Measurement Results**

Total Data Storage/Database Size	4.32
Percentage Memory/Database Size	102.4%
Start of Database Load Time	2014/8/11 21:56:51
End of Database Load Time	2014/8/12 06:11:11
Database Load Time	08:14:20
Query Streams for Throughput Test (S)	7
TPC-H Power @1000 GB	630,321.6
TPC-H Throughput @1000 GB	543,529.4
TPC-H Composite @1000 GB	585,319
Total System Price Over 3 Years	¥1,996,651
TPC-H Price/Performance Metrics (¥/QphH@1000 GB)	¥3.42

**Measurement Interval in Throughput Test (Ts)** 1,020

Power Run	Seed	Query Start Time	Duration	RF1 Start Time	RF2 Start Time
		Query End Time	(sec)	RF1 End Time	RF2 End Time
	812061111	2014-08-12 06:12:12	00 00:03:23	2014-08-12 06:11:14	2014-08-12 06:15:35
		2014-08-12 06:15:35	203	2014-08-12 06:12:12	2014-08-12 06:15:44

Throughput Stream	Seed	Query Start Time	Duration	RF1 Start Time	RF2 Start Time
		Query End Time	(sec)	RF1 End Time	RF2 End Time
1	812061112	2014-08-12 06:15:46	00 00:15:06	2014-08-12 06:15:46	2014-08-12 06:17:22
		2014-08-12 06:30:52	906	2014-08-12 06:17:22	2014-08-12 06:17:37
2	812061113	2014-08-12 06:15:46	00 00:14:17	2014-08-12 06:17:37	2014-08-12 06:19:02
		2014-08-12 06:30:03	857	2014-08-12 06:19:02	2014-08-12 06:19:16
3	812061114	2014-08-12 06:15:46	00 00:14:57	2014-08-12 06:19:16	2014-08-12 06:20:37
		2014-08-12 06:30:43	897	2014-08-12 06:20:37	2014-08-12 06:20:53
4	812061115	2014-08-12 06:15:46	00 00:12:08	2014-08-12 06:20:53	2014-08-12 06:22:17
		2014-08-12 06:27:54	728	2014-08-12 06:22:17	2014-08-12 06:22:33
5	812061116	2014-08-12 06:15:46	00 00:16:59	2014-08-12 06:22:33	2014-08-12 06:23:55
		2014-08-12 06:32:45	1019	2014-08-12 06:23:55	2014-08-12 06:24:13
6	812061117	2014-08-12 06:15:46	00 00:15:22	2014-08-12 06:24:13	2014-08-12 06:26:01
		2014-08-12 06:31:08	922	2014-08-12 06:26:01	2014-08-12 06:26:32
7	812061118	2014-08-12 06:15:46	00 00:15:35	2014-08-12 06:26:32	2014-08-12 06:28:13
		2014-08-12 06:31:21	935	2014-08-12 06:28:13	2014-08-12 06:28:32



INSPUR® K1-810

TPC-H Rev. 2.17.0  
TPC Pricing Rev. 1.7.0  
Report Date: Aug 21, 2014

## TPC-H Timing Intervals (in seconds)

Duration of query execution:

Stream ID	Q1	Q2	Q3	Q4	Q5	Q6	Q7	Q8	Q9	Q10	Q11	Q12
0	5.5	2.1	3.3	0.4	5.4	0.3	3.0	6.3	29.5	17.9	3.3	1.1
1	19.7	3.3	5.9	0.8	26.2	4.7	12.2	18.8	108.9	36.7	10.2	13.6
2	28.3	4.7	3.6	1.0	12.1	1.2	34.8	10.9	309.9	26.5	4.7	14.2
3	94.9	4.1	2.7	4.9	24.4	4.4	12.6	74.4	262.8	19.8	13.1	3.0
4	33.9	2.6	8.0	1.6	9.1	1.7	13.5	30.2	116.3	18.3	11.0	5.1
5	98.6	6.1	5.8	3.7	37.4	2.2	25.3	32.0	323.3	37.0	12.7	6.2
6	97.9	2.7	8.5	3.5	12.3	1.2	26.7	30.2	280.8	98.0	12.5	10.6
7	97.4	6.6	6.8	3.4	7.7	0.4	6.7	20.7	286.7	13.0	11.0	1.4
Min	5.5	2.1	2.7	0.4	5.4	0.3	3.0	6.3	29.5	13.0	3.3	1.1
Avg	59.5	4.0	5.6	2.4	16.8	2.0	16.9	27.9	214.8	33.4	9.8	6.9
Max	98.6	6.6	8.5	4.9	37.4	4.7	34.8	74.4	323.3	98.0	13.1	14.2
Stream ID	Q13	Q14	Q15	Q16	Q17	Q18	Q19	Q20	Q21	Q22	RF1	RF2
0	34.4	5.6	2.2	7.1	3.3	16.4	13.2	6.8	29.0	7.3	57.6	9.1
1	108.2	27.0	3.9	37.0	23.2	31.8	62.6	29.5	306.8	14.8	96.5	14.6
2	93.1	18.2	10.7	26.0	49.4	54.0	26.5	11.3	49.8	66.5	84.8	14.2
3	86.1	7.6	6.3	10.5	17.4	57.3	22.5	39.2	104.3	24.0	81.0	15.6
4	126.6	12.5	14.9	33.2	45.1	55.2	68.1	24.5	58.3	38.0	84.5	16.2
5	188.3	6.0	13.6	41.1	20.1	56.9	30.8	20.7	33.3	17.5	81.8	18.3
6	101.8	9.8	14.5	17.1	10.3	43.1	25.4	11.2	29.2	74.1	107.9	30.8
7	217.4	3.5	2.0	5.8	45.4	45.5	29.4	20.2	42.2	61.3	100.7	19.0
Min	34.4	3.5	2.0	5.8	3.3	16.4	13.2	6.8	29.0	7.3	57.6	9.1
Avg	119.5	11.3	8.5	22.2	26.8	45.0	34.8	20.4	81.6	37.9	86.9	17.2
Max	217.4	27.0	14.9	41.1	49.4	57.3	68.1	39.2	306.8	74.1	107.9	30.8