

TPC Benchmark™ H Full Disclosure Report

Sun Microsystems Sun Fire™ V440 Server Using Sybase IQ 12.5 Single Application Server

Submitted for Review
Report Date: may 9, 2005

TPC Benchmark H Full Disclosure Report

First Printing

© 2005 Sun Microsystems, Inc.

901 San Antonio Road, Palo Alto, California 94303 U.S.A.

All rights reserved. This product and related documentation are protected by copyright and distributed under licenses restricting its use, copying, distribution, and decompilation. No part of this product or related documentation may be reproduced in any form by any means without prior written authorization of Sun and its licensors, if any.

RESTRICTED RIGHTS LEGEND: Use, duplication, or disclosure by the United States Government is subject to the restrictions set forth in DFARS 252.227-7013 (c)(1)(ii) and FAR 52.227-19, Rights in Technical Data and Computer Software (October 1988).

The product described in this manual may be protected by one or more U.S. patents, foreign patents, or pending applications.

TRADEMARKS

Sun, Sun Microsystems, the Sun logo, Sun Fire V440 Server, SMCC, the SMCC logo, SunSoft, the SunSoft logo, Solaris, SunOS, OpenWindows, DeskSet, ONC, and NFS are trademarks or registered trademarks of Sun Microsystems, Inc. All other product names mentioned herein are the trademarks of their respective owners.

All SPARC trademarks, including the SCD Compliant Logo, are trademarks or registered trademarks of SPARC International, Inc. SPARCstation, SPARCserver, SPARCengine, SPARCworks, and SPARCcompiler are licensed exclusively to Sun Microsystems, Inc. Products bearing SPARC trademarks are based upon an architecture developed by Sun Microsystems, Inc.

The OPEN LOOK™ and Sun™ Graphical User Interfaces were developed by Sun Microsystems, Inc. for its users and licensees. Sun acknowledges the pioneering efforts of Xerox in researching and developing the concept of visual or graphical user interfaces for the computer industry. Sun holds a non-exclusive license from Xerox to the Xerox Graphical User Interface, which license also covers Sun's licensees who implement OPEN LOOK GUIs and otherwise comply with Sun's written license agreements.

TPC-H Benchmark™ is a trademark of the Transaction Processing Performance Council.

Sybase IQ are registered trademarks of Sybase Inc.

THIS PUBLICATION IS PROVIDED "AS IS" WITHOUT WARRANTY OF ANY KIND, EITHER EXPRESS OR IMPLIED, INCLUDING, BUT NOT LIMITED TO, THE IMPLIED WARRANTIES OF MERCHANTABILITY, FITNESS FOR A PARTICULAR PURPOSE, OR NON-INFRINGEMENT.

THIS PUBLICATION COULD INCLUDE TECHNICAL INACCURACIES OR TYPOGRAPHICAL ERRORS. CHANGES ARE PERIODICALLY ADDED TO THE INFORMATION HEREIN; THESE CHANGES WILL BE INCORPORATED IN NEW EDITIONS OF THE PUBLICATION. SUN MICROSYSTEMS, INC. MAY MAKE IMPROVEMENTS AND/OR CHANGES IN THE PRODUCT(S) AND/OR THE PROGRAM(S) DESCRIBED IN THIS PUBLICATION AT ANY TIME.

Sun Microsystems, Inc., believes that the information in this document is accurate as of its publication date. The information in this document is subject to change without notice. Sun Microsystems, Inc., assumes no responsibility for any errors that may appear in this document.

The pricing information in this document is believed to accurately reflect prices in effect on Report Date: may 9, 2005. However, Sun Microsystems and Sybase Corporation provide no warranty on the pricing information in this document.

The performance information in this document is for guidance only. System performance is highly dependent on many factors including system hardware, system and user software, and user application characteristics. Customer applications must be carefully evaluated before estimating performance. Sun Microsystems, Inc., does not warrant or represent that a user can or will achieve a similar performance. No warranty on system performance or price/performance is expressed or implied in this document.



**Sun Fire™ V440 Server
with Sybase IQ 12.5 Single
Application Server**

TPC-H Rev. 2.1.0

Report Date: may 9, 2005
Revision Date: july 25, 2005

Total System Cost

Composite Query per Hour Metric

Price/Performance

\$55,244.55

2501.0
QphH@300GB

\$22
per QphH@300GB

Database Size

Database Manager

Operating System

Other Software

Availability Date

300GB

**Sybase IQ 12.5
Single Application
Server**

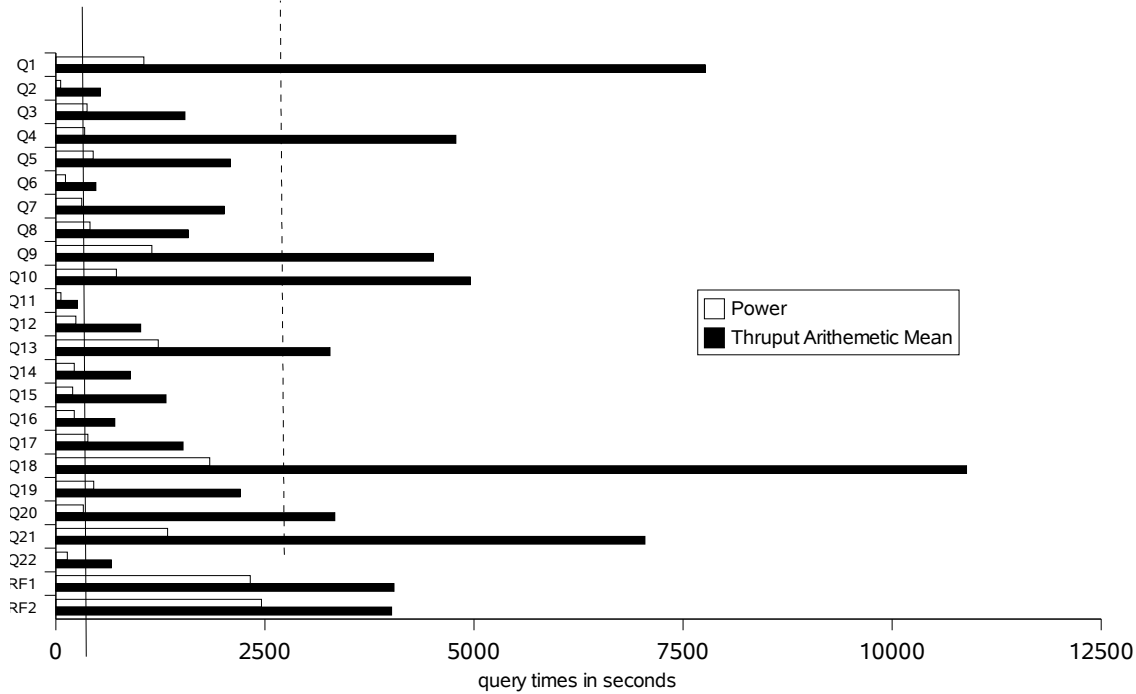
Solaris 10

**Solaris Volume
Manager**

may 9, 2005

417.3 = power geometric mean

2879.3 = throughput arithmetic mean



Database Load Time = 7 hrs 21 mins

Load Includes Backup: N

Total Storage/Database Size=1.81

RAID (Base tables): RAID 5

RAID (Base tables and auxiliary data structures): RAID 5

RAID (All): N

System Configuration:

SunFire V440 Server with
4 UltraSPARC IIIi 1600 MHz processors
32 GB memory
4 x 146GB (10K RPM) internal disks

Total Storage: 543.9 GB

(in this calculation 1 GB is defined as 1024 * 1024 * 1024)



**Sun Fire™ V440 Server
with Sybase IQ 12.5 Single
Application Server**

TPC-H Rev. 2.1.0

Report Date: may 9, 2005
Revision Date: july 25, 2005

Description	Part Number	Source	Unit Price	Qty	Ext. Price	3 Yr. maint.
Server Hardware						
SunFire V440 4x1.6 GHz CPUs, 32G memory, 4x146G disk drives			1 40,995.00	1	40,995.00	
3 Year Gold Warranty Upgrade – V440 Server (includes all disks)			1 5,832.00	1		5,832.00
Sun Discount					-6,149.25	-2,041.20
<i>Server Hardware Subtotal</i>					34,845.75	3,790.80
Storage (external)						
None					0.00	
<i>Storage Subtotal</i>					0.00	.00
Server Software						
Sybase IQ-M Single App Svr – 4 dual-core cpu	11467		2 2,595.00	4	10,380.00	
Sybase IQ 3 Years Extended Support 24 x 7	98477		2 1,557	4		6,228.00
Sybase Discount					0.00	.00
<i>Server Software Subtotal</i>					10,380.00	6,228.00
			Total		45,225.75	10,018.80
			3 Yr. Cost		55,244.55	
			QphH@ 3000GB		2,501.00	
			\$/QphH@ 300GB		\$22	

Service for all Sun products is from Sun Microsystems, Inc.

Service for Sybase products is from Sybase Inc.

Notes (Source):

1. Sun Microsystems Inc.
2. Sybase Inc.
3. PriceQuotes provided in Appendix G
4. The pricing of the Sybase IQ Single Application Server was found to be an "insignificant deviation" of Clause 0.2 by the General Council. This was corrected by increasing the visibility of Sybase IQ Single Application Server on the Web.

Audited by: Brad Askins, InfoSizing, Inc. (www.sizing.com)

Prices used in TPC benchmarks reflect the actual prices a customer would pay for a one-time purchase of the standard components. Individually negotiated discounts are not permitted. Special prices based on assumptions about past or future purchase are not permitted. All discounts reflect standard pricing policies for the listed components. For complete details, see the pricing sections of the TPC benchmark specifications. If you find that the stated prices are not available according to these terms, please inform the TPC at pricing@tpc.org. Thank you.



**Sun Fire™ V440 Server
with Sybase IQ 12.5 Single
Application Server**

TPC-H Rev. 2.1.0

Report Date: may 9, 2005
Revision Date: july 25, 2005

Numerical Quantities

Measurement Results:

Database Scale Factor	= 300GB
Total Data Storage / Database Size	=1.81
Start of database load time	= 2005-01-24 19:07:45
End of database load time	= 2005-01-25 02:28:10
Database Load Time	= 7 hrs 21 mins
Query Streams for Throughput Test	= 7
TPC-H Power	= 2,588.1
TPC-H Throughput	= 2,416.8
TPC-H Composite Query-per-Hour Rating (QphH@300GB)	= 2501.0
Total System Price Over 3 Years	= 55,244.55
TPC-H Price/Performance Metric (\$/QphH@300GB)	= \$22

Measurement Intervals:

Measurement Interval in Throughput Test (Ts)	= 68,818 seconds
--	------------------

Duration of Stream Execution:

Stream ID	Seed	Start Date	Start Time	End Date	End Time	Duration
Stream 00	125022810	Jan 26, 2005	2:10:31	Jan 26, 2005	06: 44:38	04:34:07
Stream 01	125022811	Jan 26, 2005	06:44:39	Jan 27, 2005	01:14:05	18:29:25
Stream 02	125022812	Jan 26, 2005	06:44:39	Jan 27, 2005	00:12:13	17:27:34
Stream 03	125022813	Jan 26, 2005	06:44:39	Jan 26, 2005	22:14:38	15:29:59
Stream 04	125022814	Jan 26, 2005	06:44:39	Jan 27, 2005	01:41:01	18:56:22
Stream 05	125022815	Jan 26, 2005	06:44:39	Jan 27, 2005	00:52:12	18:7:33
Stream 06	125022816	Jan 26, 2005	06:44:39	Jan 27, 2005	00:01:33	17:16:54
Stream 07	125022817	Jan 26, 2005	06:44:39	Jan 27, 2005	00:07:33	17:22:54
Refresh		Jan 26, 2005	06:44:39	Jan 27, 2005	01:51:37	19:6:58



Sun Fire™ V440 Server
with Sybase IQ 12.5 Single
Application Server

TPC-H Rev. 2.1.0

Report Date: may 9, 2005

TPC-H Timing Intervals (in seconds)

	Q1	Q2	Q3	Q4	Q5	Q6	Q7	Q8	Q9	Q10	Q11	Q12
Stream 00	1050.14	56.15	370.69	341.57	447.26	115.42	310.09	400.96	1145.64	720.97	62.16	241.54
Stream 01	8127.44	195.81	1596.99	4114.55	2587.16	840.22	1939.98	699.47	4784.07	7172.72	254.8	562.59
Stream 02	7993.12	1249.14	1139.13	4833.69	1200.96	518.34	2887.35	740.94	5484.94	3288.79	195.76	1560.42
Stream 03	6518.5	158.7	1291.92	3971.95	1778.04	399.92	1053.59	2803.61	4373.52	4628.28	190.93	1439.64
Stream 04	7855.64	128.49	1210.64	5166.96	3200.8	569.21	1287.25	1409.74	4694.59	3904.61	202.89	1436.33
Stream 05	8050	528.12	2767	5696.61	2113.34	462.24	3057.16	2211.64	3295.89	4848.27	353.84	733.85
Stream 06	7103.7	661.55	1641.25	4843.54	1282.06	345.54	948.64	1719.6	5639.5	7503.67	291.66	534.74
Stream 07	8696.9	789.47	1151.21	4837.81	2426.51	204.27	2894.86	1469.23	3331.27	3328.38	305.25	822.02
Minimum	6518.50	128.49	1139.13	3971.95	1200.96	204.27	948.64	699.47	3295.89	3288.79	190.93	534.74
Average	7763.61	530.18	7763.61	4780.73	2084.12	477.10	2009.83	1579.17	4514.83	4953.53	256.45	1012.80
Maximum	8696.90	1249.14	2767.00	5696.61	3200.80	840.22	3057.16	2803.61	5639.50	7503.67	353.84	1560.42

	Q13	Q14	Q15	Q16	Q17	Q18	Q19	Q20	Q21	Q22	RF1	RF2
Stream 00	1229.41	221.18	200.73	220.41	373.15	1856.43	449.97	331.08	1334.21	136.64	2314.2	2497.43
Stream 01	3593.29	458.06	886.14	750.45	964.38	12842.63	2674.08	2991.95	7919.19	605.25	4449.16	3871.28
Stream 02	3406.73	694.48	2447.5	637.2	2776.16	7952.58	2855.14	3988.19	6360.45	638.63	5011.31	4335.58
Stream 03	2855.9	851.35	729.41	517.21	812.97	8877.51	1306.85	3636.74	7017.13	582.01	3925.48	5177.31
Stream 04	3820.57	735.13	1172.61	665.74	3452.97	13883.43	2873.14	3029.71	7033.43	440.48	3458.29	3492.11
Stream 05	3263.28	496.07	1019.04	759.79	670.26	12572.08	1560.85	2215.09	7919.2	651.55	3682.9	4623.42
Stream 06	3188.83	1417.37	1162.44	899.49	738.53	9081.58	2242.68	3882.23	6316.08	765.01	4321.87	3947.69
Stream 07	2822.5	1559.43	1785.22	699.67	1232.7	11019.12	1918.32	3590.85	6737.48	947.94	3453.56	2651.15
Minimum	2822.50	458.06	729.41	517.21	670.26	7952.58	1306.85	2215.09	6316.08	440.48	3453.56	2651.15
Average	3278.73	887.41	1314.62	704.22	1521.14	10889.85	2204.44	3333.54	7043.28	661.55	4043.22	4014.08
Maximum	3820.57	1559.43	2447.50	899.49	3452.97	13883.43	2873.14	3988.19	7919.20	947.94	5011.31	5177.31

Table of Contents

1. General Items.....	12
1.1 Benchmark Sponsor.....	12
1.2 Parameter Settings.....	12
1.3 Configuration Diagram.....	13
2. Clause 1 Logical Database Design.....	14
2.1 Database Definition Statements.....	14
2.2 Physical Organization.....	14
2.3 Horizontal Partitioning.....	14
2.4 Replication.....	14
3. Clause 2 Queries and Refresh Functions.....	15
3.1 Query Language.....	15
3.2 Verifying Method for Random Number Generation.....	15
3.3 Generating Values for Substitution Parameters.....	15
3.4 Query Text and Output Data from Qualification Database.....	15
3.5 Query Substitution Parameters and Seeds Used.....	15
3.6 Query Isolation Level.....	16
3.7 Source Code of Refresh Functions.....	16
4. Clause 3 Database System Properties.....	17
4.1 ACID Properties.....	17
4.2 Atomicity.....	17
4.2.1 Completed Transaction.....	17
4.2.2 Aborted Transaction.....	17
4.3 Consistency.....	17
4.3.1 Consistency Test.....	18
4.4 Isolation.....	18
4.4.1 Read-Write Conflict with Commit.....	18
4.4.2 Read-Write Conflict with Rollback.....	18
4.4.3 Write-Write Conflict with Commit.....	18
4.4.4 Write-Write Conflict with Rollback.....	19
4.4.5 Concurrent Progress of Read and Write Transactions.....	19
4.4.6 Read-Only Query Conflict with Update Transaction.....	19
4.5 Durability.....	19
4.5.1 Failure of a Durable Medium.....	20
4.5.2 System Crash.....	20
4.5.3 Memory Failure.....	20
5. Clause 4 Scaling and Database Population.....	21
5.1 Ending Cardinality of Tables.....	21
5.2 Distribution of Tables and Logs Across Media.....	21
5.3 Database partition/replication mapping.....	22
5.4 RAID Feature.....	23
5.5 Modifications to the DBGEN.....	23
5.6 Database Load Time.....	23
5.7 Data Storage Ratio.....	23
5.8 Database Load Mechanism Details and Illustration.....	24
5.9 Qualification Database Configuration.....	24
6. Clause 5 Performance Metrics and Execution Rules.....	25

6.1	System Activity Between Load and Performance Tests.....	25
6.2	Steps in the Power Test.....	25
6.3	Timing Intervals for Each Query and Refresh Functions.....	25
6.4	Number of Streams for the Throughput Test.....	25
6.5	Start and End Date/Times for Each Query Stream.....	25
6.6	Total Elapsed Time of the Measurement Interval.....	25
6.7	Refresh Function Start Date/Time and Finish Date/Time.....	26
6.8	Timing Intervals for Each Query and Each Refresh Function for Each Stream.....	26
6.9	Performance Metrics.....	26
6.10	The Performance Metric and Numerical Quantities from Both Runs.....	26
6.11	System Activity Between Performance Tests.....	27
7.	Clause 6 SUT and Driver Implementation.....	28
7.1	Driver.....	28
7.2	Implementation-Specific Layer.....	28
7.3	Profile-Directed Optimization.....	28
8.	Clause 7 Pricing.....	29
8.1	Hardware and Software Used.....	29
8.2	Total Three Year Price.....	29
8.3	Availability Date.....	29
9.	Auditor's Information and Attestation Letter.....	30
	Appendix A. Solaris 9 and Sybase IQ 12.5 Parameters.....	31
	Appendix B. Programs and Scripts.....	32
	Appendix C. Query Text and Query Output.....	50
	Appendix D. Seed and Query Substitution Parameters.....	59
	Appendix E. Implementation-Specific Layer/Driver Code.....	61
	Appendix F. Misc database scripts.....	63
	Appendix G. Pricing information.....	65

INFO SIZING

Benchmark Sponsors: Brad Carlile
Director, Enterprise Benchmarking
Sun Microsystems, Inc.
8305 S. W. Creekside Place
Beaverton, OR 97008

Paul Kreneta
Chief Technologist, Sybase IQ
Sybase Inc.
One Sybase Drive
Dublin, CA 94568

February 10, 2005

I verified the TPC Benchmark™ H performance of the following configuration:

Platform: **Sun Fire V440 Server**
Database Manager: **Sybase IQ 12.5**
Operating System: **Solaris 10**

The results were:

CPU (Speed)	Memory	Disks	QphH@300GB
One (1) Sun Fire 440			
4 x UltrSPARC IIIi (1.5 GHz)	32 GB Main	4 x 146 GB	2500.9

In my opinion, this performance result was produced in compliance with the TPC's requirements for the benchmark. The following verification items were given special attention:

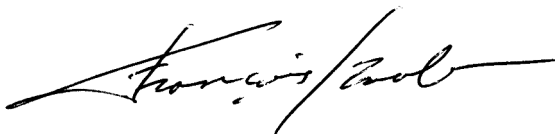
- The database records were defined with the proper layout and size
- The database population was generated using DBGEN
- The database was properly scaled to 300GB and populated accordingly
- The compliance of the database auxiliary data structures was verified
- The database load time was correctly measured and reported
- The required ACID properties were verified and met

- The query input variables were generated by QGEN
- The query text was produced using minor modifications
- The execution of the queries against the SF1 database produced compliant answers
- A compliant implementation specific layer was used to drive the tests
- The throughput tests involved 7 query streams
- The ratio between the longest and the shortest query was such that no query timing was adjusted
- The execution times for queries and refresh functions were correctly measured and reported
- The repeatability of the measured results was verified
- The required amount of database log was configured
- The system pricing was verified for major components and maintenance
- The major pages from the FDR were verified for accuracy

Additional Audit Notes:

None.

Respectfully Yours,

A handwritten signature in black ink, appearing to read "François Raab". The signature is fluid and cursive, with a long horizontal stroke at the end.

François Raab, President

A handwritten signature in black ink, appearing to read "Bradley J. Askins". The signature is cursive and includes a large, stylized initial "B".

Bradley J. Askins, Auditor

TPC Benchmark H Overview

The TPC Benchmark™ H (TPC-H) is a Decision Support benchmark. It is a suite of business-oriented ad-hoc queries and concurrent modifications. The queries and the data populating the database have been chosen to have broad industry-wide relevance while maintaining a sufficient degree of ease of implementation. This benchmark illustrates Decision Support systems that:

- Examine large volumes of data
- Execute queries with a high degree of complexity
- Give answers to critical business questions

TPC-H evaluates the performance of various Decision Support systems by the execution of sets of queries against a standard database under controlled conditions. The TPC-H queries:

- Give answers to real-world business questions
- Simulate generated ad-hoc queries
- Are far more complex than most OLTP transactions
- Include a rich breadth of operators and selectivity constraints
- Generate intensive activity on the part of the database server component of the system under test
- Are executed against a database complying to specific population and scaling requirements
- Are implemented with constraints derived from staying closely synchronized with an on-line production database

1. General Items

1.1 Benchmark Sponsor

A statement identifying the benchmark sponsor(s) and other participating companies must be provided.

Sun Microsystems, Inc. and Sybase Inc. are the sponsors of this TPC-H benchmark.

1.2 Parameter Settings

Settings must be provided for all customer-tunable parameters and options that have been changed from the defaults found in actual products, including but not limited to:

- *Database Tuning Options*
- *Optimizer/Query execution options*
- *Query processing tool/language configuration parameters*
- *Recovery/commit options*
- *Consistency/locking options*
- *Operating system and configuration parameters*
- *Configuration parameters and options for any other software component incorporated into the pricing structure*
- *Compiler optimization options*

Appendix A contains the Solaris and Sybase IQ parameters used in this benchmark.

1.3 Configuration Diagram

Provide diagrams of both the measured and priced configurations, accompanied by a description of the differences.

The priced and measured configurations were identical:



SUN Fire V440 Server

4 X 1600 MHz US IIIi processors

32 GB Memory

4 X 146 GB internal disks

2. Clause 1 Logical Database Design

2.1 Database Definition Statements

Listings must be provided for all table definition statements and all other statements used to set up the test and qualification databases.

Appendix B contains the programs and scripts that create and analyze the tables and indexes for the TPC-H database.

2.2 Physical Organization

The physical organization of tables and indices within the test and qualification databases must be disclosed. If the column ordering of any table is different from that specified in Clause 1.4, it must be noted.

No record clustering or index clustering was used. Column ordering was changed for some tables. Refer to the table create statements in Appendix B for further details.

2.3 Horizontal Partitioning

Horizontal partitioning of tables and rows in the test and qualification databases (see Clause 1.5.4) must be disclosed.

Horizontal partitioning was not used for any of the tables.

2.4 Replication

Any replication of physical objects must be disclosed and must conform to the requirements of Clause 1.5.6.

No replication was used.

3. Clause 2 Queries and Refresh Functions

3.1 Query Language

The query language used to implement the queries must be identified.

SQL was the query language used to implement all queries.

3.2 Verifying Method for Random Number Generation

The method of verification for the random number generation must be described unless the supplied DBGEN and QGEN were used.

TPC supplied versions 1.3.0 of DBGEN and QGEN were used for this TPC-H benchmark.

3.3 Generating Values for Substitution Parameters

The method used to generate values for substitution parameters must be disclosed. If QGEN is not used for this purpose, then the source code of any non-commercial tool used must be disclosed. If QGEN is used, the version number, release number, modification number, and patch level of QGEN must be disclosed.

The supplied QGEN version 1.3.0 was used to generate the substitution parameters.

3.4 Query Text and Output Data from Qualification Database

The executable query text used for query validation must be disclosed along with the corresponding output data generated during the execution of the query text against the qualification database. If minor modifications (see Clause 2.2.3) have been applied to any functional query definitions or approved variants in order to obtain executable query text, these modifications must be disclosed and justified. The justification for a particular minor query modification can apply collectively to all queries for which it has been used. The output data for the power and throughput tests must be made available electronically upon request.

Appendix C contains the query text and query output. The standard queries were used throughout with the following modifications:

- In Q1, Q4, Q5, Q6, Q10, Q12, Q14, Q15 and Q20, the "dateadd" function is used to perform date arithmetic.
- In Q7, Q8 and Q9, the "datepart" function is used to extract part of a date (e.g., "year").
- In Q2, Q3, Q10, Q18 and Q21, the "top" function is used to restrict the number of output rows.
- The semicolon (;) is used as a command delimiter.

3.5 Query Substitution Parameters and Seeds Used

The query substitution parameters used for all performance tests must be disclosed in tabular format, along with the seeds used to generate these parameters.

Appendix D contains the seed and query substitution parameters.

3.6 Query Isolation Level

The isolation level used to run the queries must be disclosed. If the isolation level does not map closely to the levels defined in Clause 3.4, additional descriptive detail must be provided.

The queries and transactions were run with isolation level 3 (repeatable read).

3.7 Source Code of Refresh Functions

The details of how the refresh functions were implemented must be disclosed (including source code of any non-commercial program used).

Appendix B contains the source code for the refresh functions.

4. Clause 3 Database System Properties

4.1 ACID Properties

The ACID (Atomicity, Consistency, Isolation and Durability) properties of transaction processing systems must be supported by the system under test during the timed portion of this benchmark. Since TPC-H is not a transaction processing benchmark, the ACID properties must be evaluated outside the timed portion of the test.

Source code for the ACID test is included in Appendix B.

4.2 Atomicity

The system under test must guarantee that transactions are atomic; the system will either perform all individual operations on the data, or will assure that no partially-completed operations leave any effects on the data.

4.2.1 Completed Transaction

*Perform the ACID Transaction for a randomly selected set of input data and verify that the appropriate rows have been changed in the **ORDERS**, **LINEITEM**, and **HISTORY** tables*

1. The total price from the **ORDERS** table and the extended price from the **LINEITEM** table were retrieved for a randomly selected order key.
2. The ACID Transaction was performed using the order key from step 1.
3. The ACID Transaction committed.
4. The total price from the **ORDERS** table and the extended price from the **LINEITEM** table were retrieved for the same order key. It was verified that the appropriate rows had been changed.

4.2.2 Aborted Transaction

*Perform the ACID Transaction for a randomly selected set of input data, substituting a **ROLLBACK** of the transaction for the **COMMIT** of the transaction. Verify that the appropriate rows have not been changed in the **ORDERS**, **LINEITEM**, and **HISTORY** tables.*

1. The total price from the **ORDERS** table and the extended price from the **LINEITEM** table were retrieved for a randomly selected order key.
2. The ACID Transaction was performed using the order key from step 1. The transaction was stopped prior to the commit.
3. The ACID Transaction was **ROLLED BACK**.
4. The total price from the **ORDERS** table and the extended price from the **LINEITEM** table were retrieved for the same order key. It was verified that the appropriate rows had not been changed.

4.3 Consistency

Consistency is the property of the application that requires any execution of transactions to take the database from one consistent state to another.

4.3.1 Consistency Test

Verify that ORDERS and LINEITEM tables are initially consistent, submit the prescribed number of ACID Transactions with randomly selected input parameters, and re-verify the consistency of the ORDERS and LINEITEM.

1. The consistency of the ORDERS and LINEITEM tables was verified based on a sample of order keys.
2. 100 ACID Transactions were submitted by each of six execution streams.
3. The consistency of the ORDERS and LINEITEM tables was re-verified.

4.4 Isolation

Operations of concurrent transactions must yield results which are indistinguishable from the results which would be obtained by forcing each transaction to be serially executed to completion in the proper order.

4.4.1 Read-Write Conflict with Commit

Demonstrate isolation for the read-write conflict of a read-write transaction and a read-only transaction when the read-write transaction is committed.

1. An ACID Transaction was started for a randomly selected O_KEY, L_KEY, and DELTA. The ACID Transaction was suspended prior to COMMIT.
2. An ACID Query was started for the same O_KEY used in step 1.
3. The ACID Transaction was resumed and COMMITTED.
4. The ACID Query completed. It returned the data as committed by the ACID Transaction.

4.4.2 Read-Write Conflict with Rollback

Demonstrate isolation for the read-write conflict of a read-write transaction and a read-only transaction when the read-write transaction is rolled back.

1. An ACID Transaction was started for a randomly selected O_KEY, L_KEY, and DELTA. The ACID Transaction was suspended prior to ROLLBACK.
2. An ACID Query was started for the same O_KEY used in step 1. The ACID Query did not see the uncommitted changes made by the ACID Transaction.
3. The ACID Transaction was ROLLED BACK.
4. The ACID Query completed.

4.4.3 Write-Write Conflict with Commit

Demonstrate isolation for the write-write conflict of two update transactions when the first transaction is committed.

1. An ACID Transaction, T1, was started for a randomly selected O_KEY, L_KEY, and DELTA. T1 was suspended prior to COMMIT.
2. Another ACID Transaction, T2, was started using the same O_KEY and L_KEY and a randomly selected DELTA.
3. T2 waited.
4. T1 was allowed to COMMIT and T2 completed.

-
5. It was verified that $T2.L_EXTENDEDPRICE = T1.L_EXTENDEDPRICE + (DELTA1 * (T1.L_EXTENDEDPRICE / T1.L_QUANTITY))$

4.4.4 Write-Write Conflict with Rollback

Demonstrate isolation for the write-write conflict of two update transactions when the first transaction is rolled back.

1. An ACID Transaction, T1, was started for a randomly selected O_KEY, L_KEY, and DELTA. T1 was suspended prior to ROLLBACK.
2. Another ACID Transaction, T2, was started using the same O_KEY and L_KEY and a randomly selected DELTA.
3. T2 waited.
4. T1 was allowed to ROLLBACK and T2 completed.
5. It was verified that $T2.L_EXTENDEDPRICE = T1.L_EXTENDEDPRICE$.

4.4.5 Concurrent Progress of Read and Write Transactions

Demonstrate the ability of read and write transactions affecting different database tables to make progress concurrently.

1. An ACID Transaction, T1, was started for a randomly selected O_KEY, L_KEY, and DELTA. T1 was suspended prior to ROLLBACK.
2. Another Transaction, T2, was started which did the following:

For random values of PS_PARTKEY and PS_SUPPKEY, all columns of the PARTSUPP table for which PS_PARTKEY and PS_SUPPKEY are equal, are returned.
3. T2 completed.
4. T1 was allowed to COMMIT.
5. It was verified that appropriate rows in ORDERS, LINEITEM and HISTORY tables were changed.

4.4.6 Read-Only Query Conflict with Update Transaction

Demonstrate that the continuous submission of arbitrary (read-only) queries against one or more tables of the database does not indefinitely delay update transactions affecting those tables from making progress.

1. A Transaction, T1, executing Q1 against the qualification database, was started using a randomly selected DELTA.
2. An ACID Transaction T2, was started for a randomly selected O_KEY, L_KEY and DELTA.
3. T2 completed and appropriate rows in the ORDERS, LINEITEM and HISTORY tables had been changed.
4. Transaction T1 completed executing Q1.

4.5 Durability

The SUT must guarantee durability: the ability to preserve the effects of committed transactions and insure database consistency after recovery from any one of the failures listed in Clause 3.5.3.

4.5.1 Failure of a Durable Medium

Guarantee the database and committed updates are preserved across a permanent irrecoverable failure of any single durable medium containing TPC-H database tables or recovery log tables.

All disks containing TPC-H tables and TPC-H indexes were housed on a single RAID5 volume. The Sybase IQ utility db file and the Sybase IQ log file were housed on a RAID1 volume. A permanent irrecoverable failure of one of the disks containing all of TPC-H tables and indexes and the IQ log file was simulated by removing it from the V440. After this was done the IQ server crashed as soon as it accessed a tempdb segment housed on that disk. Tempdb segments were not housed on RAID-protected volumes. After an additional span of about 60 seconds, power to the server was cut off. The outcome is described in section 4.5.2.

4.5.2 System Crash

Guarantee the database and committed updates are preserved across an instantaneous interruption (system crash/system hang) in processing which requires the system to reboot to recover.

A system crash was produced by cutting off power to the V440 server. When power was restored, the system automatically rebooted and the database was restarted. The durability success file and the HISTORY table were compared successfully.

4.5.3 Memory Failure

Guarantee the database and committed updates are preserved across failure of all or part of memory (loss of contents).

A memory failure was simulated by cutting off power to the V440 server. The outcome is described in section 4.5.2.

5. Clause 4 Scaling and Database Population

5.1 Ending Cardinality of Tables

The cardinality (i.e., the number of rows) of each table of the test database, as it existed at the completion of the database load (see clause 4.2.5) must be disclosed.

Table	Rows
<i>Lineitem</i>	18000048306
<i>orders</i>	450,000,000
<i>Partsupp</i>	240,000,000
<i>Part</i>	60,000,000
<i>Customer</i>	45,000,000
<i>Supplier</i>	3,000,000
<i>Nation</i>	25
<i>Region</i>	5

5.2 Distribution of Tables and Logs Across Media

The distribution of tables and logs across all media must be explicitly described.

- All tables and indexes were stored on a single RAID5 volume. The volume was constructed from four raw partitions using the Solaris Volume Manager.
- The Temp database for Sybase IQ was configured using four raw partitions, one on each of four internal disks. The Temp database volumes were not mirrored, nor RAID5 protected.

The following table shows all the disk slices used for all the non-RAID devices.

Partition	Use	Size (in GB)
c1t9d0s0	root partition	3.43
c2t1d0s3	swap	3
c2t2d0s3	swap	3
c2t3d0s3	swap	3
c2t0d0s6	tempdb [via symbolic link /sybase2/T01]	19.55
c2t1d0s1	tempdb [via symbolic link /sybase2/T02]	19.55
c2t2d0s1	tempdb [via symbolic link /sybase2/T03]	19.55
c2t3d0s1	tempdb [via symbolic link /sybase2/T04]	19.55
c2t0d0s7	SVM state replica	.0011
c2t1d0s7	SVM state replica	.0011
c2t2d0s7	SVM state replica	.0011
c2t3d0s7	SVM state replica	.0011

The next table shows the disk slices used for the SVM RAID devices. The /sybase2 file system is used to store the IQ catalog file and IQ log file.

SVM Device Details:

Raw Partition Name	SVM Device Name	SVM Contained Device	Symbolic Link	Database Usage	Database Device Size GB	RAID
c2t0d0s1	d1	d2	none	/sybase2	1	RAID 1
c2t1d0s4	d1	d3	none	/sybase2	1	RAID 1
c0t0d0s1	d15		/sybase2/M01	IQ Main	113	RAID 5
c1t1d0s1	d15		/sybase2/M01	IQ Main	113	RAID 5
c0t2d0s1	d15		/sybase2/M01	IQ Main	113	RAID 5
c1t3d0s1	d15		/sybase2/M01	IQ Main	113	RAID 5

Additional details can be found in the disk configuration section in Appendix B.

5.3 Database partition/replication mapping

The mapping of database partitions/replications must be explicitly described.

Database partitioning/replication was not used.

5.4 RAID Feature

Implementations may use some form of RAID to ensure high availability. If used for data, auxiliary storage (e.g. indexes) or temporary space, the level of RAID must be disclosed for each device.

RAID5 was used for all base tables and auxiliary data structures. The Sybase IQ utility db file and log file resided on a RAID1 volume.

5.5 Modifications to the DBGEN

Any modifications to the DBGEN (see Clause 4.2.1) source code must be disclosed. In the event that a program other than DBGEN was used to populate the database, it must be disclosed in its entirety.

The supplied DBGEN version 1.3.0 was used to generate the database population for this benchmark.

5.6 Database Load Time

The database load time for the test database (see clause 4.3) must be disclosed.

The database load time was =7 hrs 21 mins

5.7 Data Storage Ratio

The data storage ratio must be disclosed. It is computed as the ratio between the total amount of priced disk space, and the chosen test database size as defined in Clause 4.1.3.

The data storage ratio is computed from the following information:

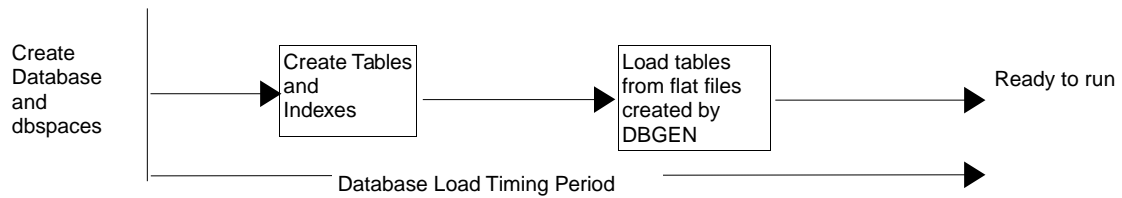
Disk Type	# Of Disks	Space Per Disk*	Sub-Total Disk Space**
internal	4	146 GB	543.9 GB
external	0		
		Total Space	543.9 GB
		Data Storage Ratio	1.81

* Disk manufacturer definition of one GB is 10^9 bytes

**In this calculation one GB is defined as 2^{30} bytes

5.8 Database Load Mechanism Details and Illustration

The details of the database load must be described, including a block diagram illustrating the overall process.



The test database was loaded using flat files. All load scripts are included in Appendix B.

5.9 Qualification Database Configuration

Any differences between the configuration of the qualification database and the test database must be disclosed.

The qualification database used identical scripts to create and load the data with only the necessary adjustments for size differences.

6. Clause 5 Performance Metrics and Execution Rules

6.1 System Activity Between Load and Performance Tests

Any system activity on the SUT that takes place between the conclusion of the load test and the beginning of the performance test must be fully disclosed.

1. Auditor requested queries were run against the database to verify the correctness of the load

All scripts and queries used are included in Appendix F

6.2 Steps in the Power Test

The details of the steps followed to implement the power test (e.g., system boot, database restart, etc.) must be disclosed.

The following steps were used to implement the power test:

1. RF1 Refresh Transaction
2. Stream 00 Execution
3. RF2 Refresh Transaction

6.3 Timing Intervals for Each Query and Refresh Functions

The timing intervals for each query and for both refresh functions must be reported for the power test.

The timing intervals for each query and both update functions are reported on the page titled “Numerical Quantities”, contained in the beginning of this document and replicated in the Executive Summary document.

6.4 Number of Streams for the Throughput Test

The number of execution streams used for the throughput test must be disclosed.

Seven streams were used for the throughput test.

6.5 Start and End Date/Times for Each Query Stream

The start time and finish time for each query stream must be reported for the throughput test.

The start times and finish times for each query stream in the throughput test are reported on the page titled “Numerical Quantities”, contained in the beginning of this document and replicated in the Executive Summary document.

6.6 Total Elapsed Time of the Measurement Interval

The total elapsed time of the measurement interval must be reported for the throughput test.

The total elapsed time of the throughput test is reported on the page titled “Numerical Quantities”, contained in the beginning of this document and replicated in the Executive Summary document.

6.7 Refresh Function Start Date/Time and Finish Date/Time

Start and finish time for each refresh function in the refresh stream must be reported for the throughput test.

The start and finish times for each refresh function:

Stream ID	Refresh Function	Start Date	Start Time	End Date	End Time
Stream 01	RF1	Jan 26, 2005	06:44:39	Jan 26, 2005	07:58:48
Stream 01	RF2	Jan 26, 2005	07:58:48	Jan 26, 2005	09:03:20
Stream 02	RF1	Jan 26, 2005	09:48:59	Jan 26, 2005	11:12:30
Stream 02	RF2	Jan 26, 2005	11:12:31	Jan 26, 2005	12:24:46
Stream 03	RF1	Jan 26, 2005	13:00:11	Jan 26, 2005	14:05:37
Stream 03	RF2	Jan 26, 2005	14:05:37	Jan 26, 2005	15:31:55
Stream 04	RF1	Jan 26, 2005	15:56:59	Jan 26, 2005	16:54:37
Stream 04	RF2	Jan 26, 2005	17:19:41	Jan 26, 2005	18:17:53
Stream 05	RF1	Jan 26, 2005	18:17:54	Jan 26, 2005	19:19:17
Stream 05	RF2	Jan 26, 2005	19:34:29	Jan 26, 2005	20:51:32
Stream 06	RF1	Jan 26, 2005	20:51:43	Jan 26, 2005	22:03:45
Stream 06	RF2	Jan 26, 2005	22:59:02	Jan 26, 2005	00:04:50
Stream 07	RF1	Jan 26, 2005	00:09:52	Jan 26, 2005	01:07:26
Stream 07	RF2	Jan 26, 2005	15:31:51	Jan 26, 2005	01:51:37

6.8 Timing Intervals for Each Query and Each Refresh Function for Each Stream

The timing intervals for each query of each stream and each refresh function must be reported for the throughput test.

The timing intervals for each query and each refresh function for the throughput test are reported on the page titled “Numerical Quantities”, contained in the beginning of this document and replicated in the Executive Summary document.

6.9 Performance Metrics

The computed performance metric, related numerical quantities and price performance metric must be reported.

The performance metrics, and the numbers on which they are based, are reported on the page titled “Numerical Quantities”, contained in the beginning of this document and replicated in the Executive Summary document.

6.10 The Performance Metric and Numerical Quantities from Both Runs

The performance metric and numerical quantities from both runs must be disclosed.

Performance results from the first two executions of the TPC-H benchmark indicated the following percent difference for the three metrics:

Run ID	QppH@1000GB	QthH@1000GB	QphH@1000GB
Run 1	2,590.90	2,420.00	2504
Run 2	2,588.10	2,416.80	2,501.00
% Difference	-0.11%	-0.13%	-0.12%

6.11 System Activity Between Performance Tests

Any activity on the SUT that takes place between the conclusion of Run1 and the beginning of Run 2 must be disclosed.

No activity occurred between Run 1 and Run 2. Moreover Sybase IQ was not restarted after the database load or between the two runs.

7. Clause 6 SUT and Driver Implementation

7.1 Driver

A detailed description of how the driver performs its functions must be supplied, including any related source code or scripts. This description should allow an independent reconstruction of the driver.

The entire test is run by executing the newtest shellsript.

The text of newtest is reproduced in Appendix E and the texts of the subscripts invoked by newtest are reproduced in Appendix B.

The scripts that perform the query streams within the power and throughput tests are generated by the gen_streams_new .ksh script (which in turn invokes QGEN to generate the actual query stream files).

The load is performed when newtest executes the statements

```
dbisqlc -c "DSN=tpch" -q load_XXX.sql
```

where XXX is lineitem, orders, customer, parts, partsupp, supplier, region and nation.

The Power Test is performed when newtest executes update_power.sql, which in turn runs the refresh functions and the power stream queries.

The Throughput Test is performed when newtest concurrently executes the seven query stream scripts, stream[1-7].sql, together with the script update_throughput7.sql. The latter executes the refresh functions in parallel with the query streams according to the rules set out in the TPC-H specification document.

7.2 Implementation-Specific Layer

If an implementation-specific layer is used, then a detailed description of how it performs its functions must be supplied, including any related source code or scripts. This description should allow an independent reconstruction of the implementation-specific layer.

All database configuration was done through scripts disclosed in Appendix B.

The performance tests are performed using dbisqlc. dbisqlc is a Sybase-provided utility that allows SQL statements to be executed against an Sybase IQ database. The dbisqlc utility is invoked from the command-line on the SUT. It reads input from files containing SQL statements and sends results to stdout. dbisqlc uses information in the .odbc.ini file to connect to the database. The performance test scripts utilizing dbisqlc can be found in Appendix E.

The ACID tests are performed using dbtest. dbtest is a Sybase-provided utility, similar to dbisqlc, but providing additional scripting capabilities. It is invoked from the command-line on the SUT and uses information in the .odbc.ini file to connect to the database. All the ACID test scripts are reproduced in Appendix B.

7.3 Profile-Directed Optimization

If profile-directed optimization as described in Clause 5.2.9 is used, such use must be disclosed.

Profile-directed optimization was not used.

8. Clause 7 Pricing

8.1 Hardware and Software Used

A detailed list of hardware and software used in the priced system must be reported. Each item must have vendor part number, description, and release/revision level, and either general availability status or committed delivery date. If package-pricing is used, contents of the package must be disclosed. Pricing source(s) and effective date(s) of price(s) must also be reported.

Refer to the Executive Summary for the pricing spreadsheet and Appendix G for the actual price quotes used to create the spreadsheet.

8.2 Total Three Year Price

The total 3-year price of the entire configuration must be reported, including hardware, software, and maintenance charges. Separate component pricing is recommended. The basis of all discounts used must be disclosed.

The total 3-year price of the configuration is \$55,244.55

. For details of pricing, see the second page of the Executive Summary.

Discounts were taken from actual price quotes, available to any buyer with like conditions, provided by Sun Microsystems Inc. and Sybase Inc. The respective price quotes are included in Appendix G of this document.

8.3 Availability Date

The committed delivery date for general availability of products used in the price calculations must be reported. When the priced system includes products with different availability dates, the reported availability date for the priced system must be the date at which all components are committed to be available.

All the components used in the measured configuration will be generally available as of May 9, 2005.

9. Auditor's Information and Attestation Letter

The auditor's agency name, address, phone number, and Attestation letter with a brief audit summary report indicating compliance must be included in the full disclosure report. A statement should be included specifying who to contact in order to obtain further information regarding the audit process.

The auditor's attestation letter follows the table of contents.

Appendix A. Solaris 10 and Sybase IQ 12.5 Parameters

This Appendix contains Solaris kernel parameters and environment variables and Sybase IQ system parameters.

Sybase IQ Server Configuration Parameters

utility.cfg

```
#
# these are the default suggested startup parameters
# for the asiq
#
# note that you will still need to provide the
# server with the server name on startup "-n", and
# possibly a different system port number
#
-n tpch440
-c 32m
-gd all
-gl all
-gm 15
-gp 4096
-ti 4400
-tl 300
-iqtc 128
-iqmc 128
```

tpch.cfg

```
# note the port number here must matche the one in
# .odbc.ini
-n tpch_440
-x tcpip{port=3011}
-c 12m
-gd all
-gl all
-gm 12
-gp 4096
-ti 4400
-tl 300
-iqmc 25500
-iqtc 4500
-iqmt 200
-iqgovern 12
-iqpartition 2
```

Sybase IQ Database Options

(altered from default)

options.sql

```
SET OPTION PUBLIC.Row_Counts='On';
SET OPTION PUBLIC.Main_Reserved_DBSpace_MB=300;

SET OPTION PUBLIC.Force_No_Scroll_Cursors='On';
SET OPTION PUBLIC.Max_IQ_Threads_Per_Connection=100;
SET OPTION PUBLIC.Query_Temp_Space_Limit=0;
SET OPTION PUBLIC.Hash_Thrashing_Percent=100;
SET OPTION
PUBLIC.SignificantDigitsForDoubleEquality=15;
SET OPTION PUBLIC.Flatten_Subqueries = 'On';
SET OPTION PUBLIC.Default_Like_Range_Selectivity = 1;
SET OPTION PUBLIC.Default_Having_Selectivity = 1;
SET OPTION PUBLIC.Max_Hash_Rows = 25000000;
SET OPTION PUBLIC.Sort_Phase1_Helpers=3;

SET OPTION PUBLIC.Sweeper_Threads_Percent=10;
SET OPTION PUBLIC.Prefetch_Threads_Percent=15;
SET OPTION PUBLIC.Wash_Area_Buffers_Percent = '20';
```

```
SET OPTION PUBLIC.Load_Memory_Mb=0;
SET OPTION PUBLIC.Append_Load='On';
SET OPTION PUBLIC.Garray_Fill_Factor_Percent=3;
SET OPTION PUBLIC.Minimize_Storage='On';
SET OPTION PUBLIC.Notify_Modulus=10000000;
SET OPTION PUBLIC.Allow_Nulls_By_Default='Off';
```

Sybase IQ Environment Variables

```
SYBASE="/export/home/sybase"
export SYBASE
SYBASE_OCS="OCS-12_5"
export SYBASE_OCS
SYBASE_JRE="${SYBASE}/shared/jre-1_22"
export SYBASE_JRE
ASDIR="${SYBASE}/ASIQ-12_5"
export ASDIR
PATH="${ASDIR}/bin:${SYBASE}/${SYBASE_OCS}/bin:${PATH}:/etc:."
export PATH
IQLIB="${ASDIR}/usr/lib:${ASDIR}/lib:${SYBASE}/${SYBASE_OCS}/lib"
LD_LIBRARY_PATH_64="${IQLIB}:%LD_LIBRARY_PATH_64"
export LD_LIBRARY_PATH_64
LD_LIBRARY_PATH="${IQLIB}:%LD_LIBRARY_PATH"
export LD_LIBRARY_PATH
unset IQLIB
LD_PRELOAD=mpss.so.1
export LD_PRELOAD
MPSSHEAP=512K
MPSSSTACK=64K
export MPSSHEAP
export MPSSSTACK
```

.odbc.ini

```
[ODBC Data Sources]
tpch=ASIQ Driver
utility_db=ASIQ Driver

[tpch]
Driver=/export/home/sybase/asiq12/lib/dbodbc7_r.so.1
EngineName=tpch_440
CommLinks=tcpip{host=10.8.5.39;Port=3011}
DatabaseName=tpch
UserID=DBA
Password=SQL
DBG=yes
LOG=/tmp/tpch_odbc.log

[utility_db]
Driver=/export/home/sybase/asiq12/lib/dbodbc7_r.so.1
EngineName=tpch490
CommLinks=tcpip{host=10.8.5.38;Port=2638}
DatabaseName=utility_db
UserID=DBA
Password=SQL
DBG=yes
LOG=/tmp/utility_db_odbc.log
```

Solaris Parameters

(altered from default)

/etc/system

```
set tune_t_fsflushr=600
set autoup=36000000
```


Appendix B. Programs and Scripts

check_query1.bash

```
#!/bin/bash
#
# First remove the rf1.lock so that the Query Stream
will start
#
rm -f /export/home/sybase/run/scripts/rf1.lock
#
# Sleep while the rf2.lock file exists
# when the query stream completes it will remove the
rf2.lock
#
while [ -f /export/home/sybase/run/scripts/rf2.lock ]
do
# Wait for the Query Steam to complete
# check every 10 seconds
# echo "Lock File Exists"
sleep 10
done
# Return Control to the RF stream
```

create_database.sql

```
CREATE DATABASE '/sybase2/tpch.db'
TRANSACTION LOG ON
COLLATION 'ISO_BINENG'
CASE RESPECT
PAGE SIZE 4096
BLANK PADDING ON
JAVA ON
JCONNECT ON
IQ PATH '/sybase2/M01'
IQ PAGE SIZE 524288
TEMPORARY PATH '/sybase2/T01'
```

create_dbspaces.sql (writer instance only)

```
create dbspace iqtemp2 as '/sybase2/T02' iq
temporary store;
create dbspace iqtemp3 as '/sybase2/T03' iq
temporary store;
create dbspace iqtemp4 as '/sybase2/T04' iq
temporary store;
```

create_tables.sql

```
CREATE TABLE region
(
r_regionkey unsigned int,
r_name char(25),
r_comment varchar(152),
PRIMARY KEY (r_regionkey)
);

CREATE TABLE nation
(
n_nationkey unsigned int,
n_name char(25),
n_regionkey unsigned int,
n_comment varchar(152),
PRIMARY KEY (n_nationkey)
);
CREATE HG INDEX n_regionkey_hg ON nation
(n_regionkey) ;
```

```
CREATE TABLE supplier
(
s_suppkey unsigned int,
s_name char(25),
s_address varchar(40),
s_nationkey unsigned int,
s_phone char(15),
s_acctbal double precision,
s_comment varchar(101),
PRIMARY KEY (s_suppkey)
);
CREATE HG INDEX s_nationkey_hg ON supplier
(s_nationkey) ;
```

```
CREATE TABLE part
(
p_partkey unsigned int,
p_name varchar(55),
p_mfgr char(25),
p_brand char(10),
p_type varchar(25),
p_size int,
p_container char(10),
p_retailprice double precision,
p_comment varchar(23),
PRIMARY KEY(p_partkey)
);
```

```
CREATE TABLE partsupp
(
ps_partkey unsigned int,
ps_suppkey unsigned int,
ps_availqty integer,
ps_supplycost double precision,
ps_comment varchar(199),
PRIMARY KEY (ps_partkey, ps_suppkey)
);
CREATE HG INDEX ps_partkey_hg ON partsupp
(ps_partkey) ;
CREATE HG INDEX ps_suppkey_hg ON partsupp
(ps_suppkey) ;
```

```
CREATE TABLE customer
(
c_custkey unsigned int,
c_name varchar(25),
c_address varchar(40),
c_nationkey unsigned int,
c_phone char(15),
c_acctbal double precision,
c_mktsegment char(10),
c_comment varchar(117),
PRIMARY KEY(c_custkey)
);
CREATE HG INDEX c_nationkey_hg ON customer
(c_nationkey) ;
```

```
CREATE TABLE orders
(
o_orderkey unsigned bigint,
o_custkey unsigned int,
o_orderstatus char(1),
o_totalprice double precision,
o_orderdate date,
o_orderpriority char(15),
o_clerk char(15),
o_shippriority int,
o_comment varchar(79),
PRIMARY KEY (o_orderkey)
);
CREATE HG INDEX o_custkey_hg ON orders(o_custkey) ;
CREATE DATE INDEX o_orderdate_date ON orders
(o_orderdate) ;
```

```
CREATE TABLE lineitem
(
l_orderkey unsigned bigint,
l_partkey unsigned int,
l_suppkey unsigned int,
l_linenumber int,
l_quantity double precision,
```

```

l_extendedprice      double precision,
l_discount           double precision,
l_tax               double precision,
l_returnflag        char(1),
l_linestatus        char(1),
l_shipdate          date,
l_commitdate        date,
l_receiptdate       date,
l_shipinstruct      char(25),
l_shipmode          char(10),
l_comment           varchar(44)
);

CREATE HG INDEX l_partsupp_hg ON lineitem
(l_partkey,l_suppkey) ;
CREATE HG INDEX l_orderkey_hg ON lineitem
(l_orderkey) ;
CREATE HG INDEX l_partkey_hg ON lineitem(l_partkey) ;
CREATE HG INDEX l_suppkey_hg ON lineitem(l_suppkey) ;
CREATE DATE INDEX l_shipdate_date ON lineitem
(l_shipdate) ;
CREATE DATE INDEX l_receiptdate_date ON lineitem
(l_receiptdate);

=====
tpch_rf_int.sql
=====

create table refresh_control ( rf1_data_set int not
null, rf2_data_set int not null);
insert into refresh_control values (0,0);
commit;
CREATE PROCEDURE DBA.tpch_rf1 (IN c_directory varchar
(128),
                                IN c_stream varchar(3))
ON EXCEPTION RESUME
BEGIN
  DECLARE delim_ascii integer;
  DECLARE c_data_set varchar(3);
  DECLARE i_data_set integer;
  DECLARE c_cmd long varchar;
  DECLARE outfile_name varchar(128); -- Debug
  DECLARE outfile_name2 varchar(128); -- Debug
  DECLARE c_lf varchar(2);
  DECLARE t_qstart timestamp;
  DECLARE t_qstop timestamp;
  DECLARE n_seconds numeric(16,5);
  DECLARE c_sqlstate CHAR(5);
  SET t_qstart = now(*);
  SET c_lf=char(10);
  SELECT rf1_data_set INTO i_data_set FROM
refresh_control;
  SET c_data_set=CAST(i_data_set+1 AS varchar(3));
  SET c_cmd='load table orders ('+c_lf;
  SET c_cmd=c_cmd+' o_orderkey '+char(39)+'|'+char(39)
+', '+c_lf;
  SET c_cmd=c_cmd+' o_custkey '+char(39)+'|'+char(39)
+', '+c_lf;
  SET c_cmd=c_cmd+' o_orderstatus '+char(39)+'|'+char
(39)+'', '+c_lf;
  SET c_cmd=c_cmd+' o_totalprice '+char(39)+'|'+char
(39)+'', '+c_lf;
  SET c_cmd=c_cmd+' o_orderdate date('+char(39)+'YYYY-
MM-DD'+char(39)+')', filler(1), '+c_lf;
  SET c_cmd=c_cmd+' o_orderpriority '+char(39)+'
|'+char(39)+'', '+c_lf;
  SET c_cmd=c_cmd+' o_clerk '+char(39)+'|'+char(39)+'',
'+c_lf;
  SET c_cmd=c_cmd+' o_shippriority '+char(39)+'|'+char
(39)+'', '+c_lf;
  SET c_cmd=c_cmd+' o_comment '+char(39)+'|'+char(39)
+' )'+c_lf;
  SET c_cmd=c_cmd+'from '+char(39)
+c_directory+'orders.tbl.u'+c_data_set+char(39)+c_lf;
  SET c_cmd=c_cmd+'row delimited by '+char(39)
+'\\x0a'+char(39)+' quotes off escapes off preview
on;';
  EXECUTE IMMEDIATE c_cmd;
  SELECT SQLSTATE INTO c_sqlstate;
  IF c_sqlstate != '00000' THEN
    ROLLBACK;
    RAISERROR 23002 'RF1 failed at Step 1 with
SQLSTATE: ', c_sqlstate;
    RETURN(1);
  END IF;
  SET c_cmd='load table lineitem ('+c_lf;
  SET c_cmd=c_cmd+' l_orderkey '+char(39)+'|'+char(39)
+', '+c_lf;
  SET c_cmd=c_cmd+' l_partkey '+char(39)+'|'+char(39)
+', '+c_lf;
  SET c_cmd=c_cmd+' l_suppkey '+char(39)+'|'+char(39)
+', '+c_lf;
  SET c_cmd=c_cmd+' l_linenumbers '+char(39)+'|'+char
(39)+'', '+c_lf;
  SET c_cmd=c_cmd+' l_quantity '+char(39)+'|'+char(39)
+', '+c_lf;
  SET c_cmd=c_cmd+' l_extendedprice '+char(39)+'
|'+char(39)+'', '+c_lf;
  SET c_cmd=c_cmd+' l_discount '+char(39)+'|'+char(39)
+', '+c_lf;
  SET c_cmd=c_cmd+' l_tax '+char(39)+'|'+char(39)+'',
'+c_lf;
  SET c_cmd=c_cmd+' l_returnflag '+char(39)+'|'+char
(39)+'', '+c_lf;
  SET c_cmd=c_cmd+' l_linestatus '+char(39)+'|'+char
(39)+'', '+c_lf;
  SET c_cmd=c_cmd+' l_shipdate date('+char(39)+'YYYY-
MM-DD'+char(39)+')', filler(1), '+c_lf;
  SET c_cmd=c_cmd+' l_commitdate date('+char(39)
+'YYYY-MM-DD'+char(39)+')', filler(1), '+c_lf;
  SET c_cmd=c_cmd+' l_receiptdate date('+char(39)
+'YYYY-MM-DD'+char(39)+')', filler(1), '+c_lf;
  SET c_cmd=c_cmd+' l_shipinstruct '+char(39)+'|'+char
(39)+'', '+c_lf;
  SET c_cmd=c_cmd+' l_shipmode '+char(39)+'|'+char(39)
+', '+c_lf;
  SET c_cmd=c_cmd+' l_comment '+char(39)+'|'+char(39)
+' )'+c_lf;
  SET c_cmd=c_cmd+'from '+char(39)
+c_directory+'lineitem.tbl.u'+c_data_set+char(39)
+c_lf;
  SET c_cmd=c_cmd+'row delimited by '+char(39)
+'\\x0a'+char(39)+c_lf+'quotes off escapes off preview
on;';
  EXECUTE IMMEDIATE c_cmd;
  SELECT SQLSTATE INTO c_sqlstate;
  IF c_sqlstate != '00000' THEN
    ROLLBACK;
    RAISERROR 23002 'RF1 failed at Step 2 with
SQLSTATE: ', c_sqlstate;
    RETURN(1);
  END IF;
  UPDATE refresh_control SET rf1_data_set=cast
(c_data_set AS integer);
  COMMIT;
  SET t_qstop = now(*);
  SET n_seconds=cast(datediff
(millisecond,t_qstart,t_qstop) AS numeric(16,5))/1000;
  SET c_cmd='Stream updates Update
update_'+c_stream+' RF1 LENGTH -- '+cast(n_seconds AS
varchar(20))+ ' seconds' ;
  SELECT c_cmd;
  RETURN(0);
END;
CREATE PROCEDURE DBA.tpch_rf2 (in c_directory varchar
(128),
                                in c_stream varchar(3))
ON exception resume
BEGIN
  DECLARE delim_ascii integer;
  DECLARE c_data_set varchar(3);
  DECLARE i_data_set integer;
  DECLARE c_cmd long varchar;
  DECLARE outfile_name varchar(128); -- Debug
  DECLARE c_lf varchar(2);
  DECLARE t_qstart timestamp;
  DECLARE t_qstop timestamp;
  DECLARE n_seconds numeric(16,5);
  DECLARE c_sqlstate CHAR(5);
  SET t_qstart = now(*);
  SET c_lf=char(10);
  SELECT rf2_data_set INTO i_data_set FROM
refresh_control;
  SET c_data_set=CAST(i_data_set+1 AS varchar(3));
  CREATE TABLE #delete_table ( d_orderkey UNSIGNED
INT, PRIMARY KEY (d_orderkey) );
  SET c_cmd='load table #delete_table (d_orderkey
'+char(39)+'\\x0a'+char(39)+' )'+c_lf;
  SET c_cmd=c_cmd+'from '+char(39)

```

```

+c_directory+'delete.'+c_data_set+char(39)+c_lf;
SET c_cmd=c_cmd+'quotes off '+c_lf;
SET c_cmd=c_cmd+'escapes off; '+c_lf;
EXECUTE IMMEDIATE c_cmd;
SELECT SQLSTATE INTO c_sqlstate;
IF c_sqlstate != '00000' THEN
ROLLBACK;
SET c_cmd='RF2 failed at Step 1 with SQLSTATE:
'+c_sqlstate;
RAISERROR 23002 c_cmd;
RETURN(1);
END IF;
DELETE lineitem FROM lineitem
WHERE l_orderkey in (select d_orderkey from
#delete_table);
SELECT SQLSTATE INTO c_sqlstate;
IF c_sqlstate != '00000' THEN
ROLLBACK;
SET c_cmd='RF2 failed at Step 2 with SQLSTATE:
'+c_sqlstate;
RAISERROR 23002 c_cmd;
RETURN(1);
END IF;
DELETE orders FROM orders
WHERE o_orderkey in (select d_orderkey from
#delete_table);
SELECT SQLSTATE INTO c_sqlstate;
IF c_sqlstate != '00000' THEN
ROLLBACK;
SET c_cmd='RF2 failed at Step 3 with SQLSTATE:
'+c_sqlstate;
RAISERROR 23002 c_cmd;
RETURN(1);
END IF;
UPDATE refresh_control SET rf2_data_set=CAST
(c_data_set AS integer);
COMMIT;
DROP TABLE #delete_table;
SET t_qstop = now(*);
SET n_seconds=cast(datediff
(millisecond,t_qstart,t_qstop) as numeric(16,5))/1000;
SET c_cmd='Stream updates Update
update '+c_stream+'_RF2 LENGTH -- '+cast(n_seconds as
varchar(20))+ ' seconds' ;
SELECT c_cmd;
RETURN(0);
END;

```

load_region.sql

```

LOAD TABLE REGION (
R_REGIONKEY
R_NAME
R_COMMENT
)
FROM '/sybase_stage/region.tbl'
escapes off
quotes off
row delimited by '\x0a'
WITH CHECKPOINT ON;
commit;

```

load_nation.sql

```

LOAD TABLE NATION (
N_NATIONKEY
N_NAME
N_REGIONKEY
N_COMMENT
)
FROM '/sybase_stage/nation.tbl'
escapes off
quotes off
row delimited by '\x0a'
WITH CHECKPOINT ON;
commit;

```

load_customer.sql

```

LOAD TABLE CUSTOMER (
C_CUSTKEY
C_NAME
C_ADDRESS
C_NATIONKEY
C_PHONE
C_ACCTBAL
C_MKTSEGMENT
C_COMMENT
)
FROM '/sybase_stage/customer.tbl'
escapes off
quotes off
row delimited by '\x0a'
WITH CHECKPOINT ON;
commit;

```

load_part.sql

```

LOAD TABLE PART (
P_PARTKEY
P_NAME
P_MFGR
P_BRAND
P_TYPE
P_SIZE
P_CONTAINER
P_RETAILPRICE
P_COMMENT
)
FROM '/sybase_stage/part.tbl'
escapes off
quotes off
row delimited by '\x0a'
WITH CHECKPOINT ON;
commit;

```

load_supplier.sql

```

LOAD TABLE SUPPLIER (
S_SUPPKEY
S_NAME
S_ADDRESS
S_NATIONKEY
S_PHONE
S_ACCTBAL
S_COMMENT
)
FROM '/sybase_stage/supplier.tbl'
escapes off
quotes off
row delimited by '\x0a'
WITH CHECKPOINT ON;
commit;

```

load_partsupp.sql

```

LOAD TABLE PARTSUPP (
PS_PARTKEY
PS_SUPPKEY
PS_AVAILQTY
PS_SUPPLYCOST
PS_COMMENT
)
FROM '/sybase_stage/partsupp.tbl'
escapes off
quotes off
row delimited by '\x0a'
WITH CHECKPOINT ON;
commit;

```

load_orders.sql

```
LOAD TABLE ORDERS (
O_ORDERKEY          | | |
O_CUSTKEY           | | |
O_ORDERSTATUS       | | |
O_TOTALPRICE        | | |
O_ORDERDATE         | | |
O_ORDERPRIORITY     | | |
O_CLERK             | | |
O_SHIPRIORITY       | | |
O_COMMENT           | | |
)
FROM
'/sybase_stage/orders.tbl'
escapes off
quotes off
row delimited by '\x0a'
WITH CHECKPOINT ON;
commit;
```

load_lineitem.sql

```
LOAD TABLE LINEITEM (
L_ORDERKEY          | | |
L_PARTKEY           | | |
L_SUPPKEY           | | |
L_LINENUMBER        | | |
L_QUANTITY          | | |
L_EXTENDEDPRICE     | | |
L_DISCOUNT         | | |
L_TAX               | | |
L_RETURNFLAG        | | |
L_LINESTATUS        | | |
L_SHIPDATE          | | |
L_COMMITDATE        | | |
L_RECEIPTDATE       | | |
L_SHIPINSTRUCT      | | |
L_SHIPMODE          | | |
L_COMMENT           | | |
)
FROM
'/sybase_stage/lineitem.tbl'
escapes off
quotes off
row delimited by '\x0a'
WITH CHECKPOINT ON;
commit;
checkpoint;
commit;
```

update_power.sql

```
create variable qstart timestamp;
create variable qstop timestamp;
create variable c_sqlstate CHAR(5);
create variable c_path varchar(128);
set c_path='/sybase_stage/';
set qstart=now(*);
select 'Stream 0 RF1 START -- ', qstart ;
call tpch_rf1 (c_path,'0');
set qstop=now(*);
select 'Stream 0 Update RF1 LENGTH -- ',cast(datediff
(millisecond,qstart,qstop) as numeric)/1000, '
seconds';
select 'Stream 0 RF1 FINISH -- ', qstop ;
-- Sleep Until the query stream completes
set qstart = now(*);
select 'Stream 0 RF WAITING -- ', qstart;
xp_cmdshell
('/export/home/sybase/run/scripts/check_query1.bash');
set qstart = now(*);
select 'Stream 0 RF CONTINUING -- ', qstart;
set qstart = now(*);
select 'Stream 0 RF2 START -- ', qstart ;
call tpch_rf2 (c_path,'0');
set qstop=now(*);
select 'Stream 0 Update RF2 LENGTH -- ',cast(datediff
(millisecond,qstart,qstop) as numeric)/1000, '
```

```
seconds';
select 'Stream 0 RF2 FINISH -- ', qstop ;
```

update_throughput7.sql

```
create variable qstart timestamp;
create variable qstop timestamp;
create variable c_sqlstate CHAR(5);
create variable c_path varchar(128);
set qstart = now(*);
set c_path='/sybase_stage/';
select 'Stream updates START -- ', qstart ;
select @@servername, db_name();
call tpch_rf1 (c_path,'1');
commit;
tpch_wait;
call tpch_rf2 (c_path,'1');
commit;
tpch_wait;
call tpch_rf1 (c_path,'2');
commit;
tpch_wait;
call tpch_rf2 (c_path,'2');
commit;
tpch_wait;
call tpch_rf1 (c_path,'3');
commit;
tpch_wait;
call tpch_rf2 (c_path,'3');
commit;
tpch_wait;
call tpch_rf1 (c_path,'4');
commit;
tpch_wait;
call tpch_rf2 (c_path,'4');
commit;
tpch_wait;
call tpch_rf1 (c_path,'5');
commit;
tpch_wait;
call tpch_rf2 (c_path,'5');
commit;
tpch_wait;
call tpch_rf1 (c_path,'6');
commit;
tpch_wait;
call tpch_rf2 (c_path,'6');
commit;
tpch_wait;
call tpch_rf1 (c_path,'7');
commit;
tpch_wait;
call tpch_rf2 (c_path,'7');
commit;
set qstop = now(*);
select 'Stream updates STOP -- ', qstop ;
```

my_start_asiq

```
#!/bin/bash
export LD_PRELOAD=mpss.so.1
export MPSSHEAP=$1
export MPSSSTACK=$2
```

```
start_asiq $3 $4
```

start_asiq

```
#!/bin/sh
#
-----
# @(#)start_asiq                01/20/2004
Sybase, Inc.
#
-----
# Start Adaptive Server IQ 12.5
#
-----
```

```

-----
# Copyright (c) 1995 - 2003 Sybase, Inc. All rights
reserved.
# Unpublished rights reserved under U.S. copyright
laws. This software
# contains confidential and trade secret information
of Sybase, Inc.
# Use, duplication or disclosure of the software and
documentation by
# the U.S. Government is subject to restrictions set
forth in a license
# agreement between the Government and Sybase, Inc. or
other written
# agreement specifying the Government's rights to use
the software and
# any applicable FAR provisions, for example, FAR
52.227-19.
#
-----

```

```

if [ -z "$LANG" ] # ... If not english, ignore
(for now) ....
then TMP_LANG=""
else TMP_LANG="$LANG"; unset LANG
fi

```

```

PATH=/bin:/usr/bin:/etc:/usr/sbin:/usr/bsd:.$PATH
export PATH TMP_LANG

```

```

#
-----
# Write an error message to the error log
#
-----

```

```

Write2ErrorLog()
{
if [ -z "$STDERR_LOG" ]
then
if [ -d "$ASDIR/logfiles" ]
then
STDERR_LOG="$ASDIR/logfiles/start_asiq.log"
else STDERR_LOG="/tmp/start_asiq.log"
fi
fi
}

```

```

NOW=`date "+%m/%d %H:%M:%S"`
echo "
-----
start_asiq:\n
E. $NOW. $1
" >> $STDERR_LOG

```

```

echo "Error written to: $STDERR_LOG\n"
}
#
-----
# Display an error message and exit
#
-----

```

```

Error()
{
case "$1" in
ERR_ASDIR) MSG="Unable to find valid \\\$ASIQ
directory"
;;
ERR_BAD_START) MSG="Parameter '-STARTDIR'
cannot be used with '-ud'"
;;
ERR_CREATEFILE) MSG="Cannot create or write to
the file:\n\t$2"
;;

```

```

ERR_ENVDIR) MSG="$2 is not set to a
valid directory ($3)"
;;
ERR_MISS_FILE) MSG="Cannot find required file
'$2'"
;;
ERR_SHMEM) MSG="Shared memory requested
(-iqsmem) exceeds o/s maximum ($2)"
;;
ERR_STARTDIR) MSG="Invalid directory/parameter
-STARTDIR ($2)"
;;
ERR_SYBASE) MSG="Unable to find valid
\\$SYBASE directory"
;;

```

```

ERR_SYBASE_OCS) MSG="\\$SYBASE_OCS is set
incorrectly ($SYBASE_OCS)"
;;
ERR_WRITEDIR) MSG="Cannot write to $2
directory ($3)."
;;

```

```

ERR_CHDIR) MSG="Cannot CD to the directory
($2)."
;;
*) MSG="Failed to print error. $1
is missing from error list"
;;

```

```

esac
echo "\007 \nError:\t${MSG}\n\tUnable to continue.\n"
Write2ErrorLog "$MSG"
rm -rf $TMP_FILE
exit 1
}
#
-----

```

```

# Display a warning to the stderr log (if exists)
#
-----

```

```

Warning()
{
case "$1" in
WARN_MEMORY) MSG="
Ambiguous memory cache sizes detected.
A server should be started using either the
'-c' parameter
or the ( '-cl' and '-ch' ) parameters.
Combining conflicting
memory parameters in the same startup line
could cause
unexpected results."
;;

```

```

WARN_LOGS) MSG="
log directory '$ASLOGDIR' is filling.
This server alone has $TOTAL_NUM_LOGS log
files.
Please clean out soon!"
;;
*) MSG="Failed to print warning. $1
is missing from warning list"
;;

```

```

esac
if [ -f "$STDERR_LOG" ]
then echo "\nWarning: $MSG" >> "$STDERR_LOG"
else echo "\nWarning: $MSG"
fi
sleep 2

```

```

}
#
-----
# Return 0 if a directory is writable
#
-----

IsDirWriteable()
{
if [ -d "$1" ]
then
    if touch "$1/.wri_tst.$$" 2>/dev/null
    then
        rm -f "$1/.wri_tst.$$" && return 0
    fi
fi
return 1
}
#
-----
# Extract all parameter from the cmd line, @file and
# @env_var and
# highlight parameters that we are looking for: xSVR,
# xDB, xPORT
# to get -x tcpip{;}/(;) to work, set all non-
# alphanumerics to "="
#
-----

Show_All_Parms()
{
eval set -- `echo . $* |sed 's/[{}()]/=/g'` # Remove
"quotes", clean comms param
shift
while [ -n "$1" ]
do
    case "$1" in
        NULL)    NULL=""
                ;;
        -n)      echo xSVR $2
                shift
                ;;
        -o)      echo xLOG $2
                shift
                ;;
        -x*)     FOUND_PORT=0;
                for PORT_PARM in `echo $1 $2|
sed 's/= / /g'`
                do
                    if [ $FOUND_PORT = 1 ]
                    then
                        echo xPORT
                        break
                    fi
                done
                [ "$PORT_PARM" = port ]
                && FOUND_PORT=1;
                [ ".$1" = "-x" ] && shift #
only shift if it's value follows.
                ;;
        -*)      echo "$1"
                case "$2" in
                    all)
echo "$2"; shift;; # Follow on "all"
                    [1-9])
echo "$2"; shift;; # Follow on 0-9
                    [1-9][0-9])
echo "$2"; shift;; # Follow on 10-99
                    [1-9][0-9][0-9])

```

```

echo "$2"; shift;; # Follow on 100-999
                    [1-9][0-9][0-9][0-9])
echo "$2"; shift;; # Follow on 1000-9999
                    esac
                    ;;
        @*)     AT_PARM=`echo $1 | cut -c2-160`
                if [ -f "$AT_PARM" ]
                then
                    Show_All_Parms `grep -v
'^#' $AT_PARM`
                else
                    eval VARS=`echo
${AT_PARM}`
                    Show_All_Parms $VARS
                fi
                ;;
        *)      if [ -s "$1" -o -s "$1.db" ]
                then
                    DB_FILE=`echo $1 | sed
's/\.db$/ /g'`
                    echo xDB `basename
"$DB_FILE"`
                else
                    echo "$1";
                fi
                ;;
    esac
    [ $# -ge 1 ] && shift
done
}
#
-----
# Extract from the file default.cfg all parameters not
# listed by user
#
-----

Get_Default_Parms()
{
DEFAULT_FILE="$ASDIR/scripts/default.cfg"
[ ! -f $DEFAULT_FILE ] && Error "ERR_MISS_FILE"
"$DEFAULT_FILE"
# ... Write an awk script out to a file for extracting
# params ...
echo '
BEGIN {
    default_file="'$DEFAULT_FILE'";
    def_name[0]=""; def_value[0]=""; ndef=0;
    def_pos=0;
    usr_name[0]=""; usr_value[0]=""; nusr=0;
    usr_pos=0;
}
'
#
-----
# Find Parameter in either array
function ParmExists( which_array, search_parm )
{
if ( which_array == "usr" )
{
for (usr_pos=0; usr_pos<nusr; usr_pos++)
{
if ( usr_name[usr_pos] == search_parm )
return(1);
}
}
else
{
for (def_pos=0; def_pos<ndef; def_pos++)
{
if ( def_name[def_pos] == search_parm )
return(1);
}
}
}
}

```



```

        echo '
Usage: start_asiq [server switches] {database
[switches]}*
        [ '-?' for a full list of parameters
] \n'
        exit 1
fi

# ... tmp file for
starting .....

TMP_FILE=/tmp/.start_asiq.$$tmp      ; export TMP_FILE

# ... Set server parameters to
null .....

SERVER_NAME="";
SERVER_LOG="";
STDERR_LOG="";
DB_NAME="";
PORT_NUM="(default)";          # default port number
2638.

export SERVER_NAME SERVER_LOG STDERR_LOG DB_NAME
PORT_NUM

# ... Where do I start the
server .....

if [ ".$1" = ".-STARTDIR" ]
then
    [ ! -d "$2" ] && Error "ERR_STARTDIR" "$2"

    cd "$2" || Error "ERR_STARTDIR" "$2"

    shift 2

    if expr "$*" : '.*-ud ' >/dev/null
    then
        Error "ERR_BAD_START"
    fi

fi

[ "`pwd`" = "$ASDIR/bin" ] && cd .. # Don't start in
bin dir

START_DIR=`pwd`

# --- Make sure $$SYBASE and $$SYBASE_OCS are set
-----

[ -z "$SYBASE" ] && Error "ERR_ENVDIR" "\$SYBASE"
"$SYBASE"

[ ! -d "$SYBASE/locales" ] && Error "ERR_SYBASE"

for TRY_DIR in "$SYBASE_OCS" "OCS-12_5" "OCS-12_0"
Not_Found
do
    if [ -d "$SYBASE/$TRY_DIR/lib" ]
    then
        SYBASE_OCS="$TRY_DIR" ; export
SYBASE_OCS
        break
    fi
done

[ "$TRY_DIR" = "Not_Found" ] && Error "ERR_SYBASE_OCS"

# --- Find the ASIQ directory
-----

for TRY_DIR in "$ASDIR" `dirname $0`/.. "$SYBASE/ASIQ-
12_5" . Not_Found
do
    [ -d "$TRY_DIR/lib" -a          \
    -d "$TRY_DIR/res" -a          \
    -x "$TRY_DIR/bin/asiqsrv12" ] && break;
done

[ "$TRY_DIR" = "Not_Found" ] && Error ERR_ASDIR
"\$ASDIR"

cd "$TRY_DIR" || Error ERR_CHDIR "$TRY_DIR"

ASDIR=`pwd`      ; export ASDIR

```

```

cd "$START_DIR"      || Error ERR_CHDIR "$START_DIR"

# --- Clean out temp log file if exists
-----

rm -rf $ASDIR/logfiles/start_asiq.log

# --- Check the current environment
-----

if [ -s $XWAY_ENV/switch_cc -a -s $XWAY_ENV/CC_setup ]
then
    IN_HOUSE="Y"
else
    IN_HOUSE=""
fi

if [ -n "$ASTMP" ]
then
    if [ ! -d "$ASTMP" ]
    then
        Error ERR_ENVDIR "\$ASTMP" "$ASTMP"
    fi

    IsDirWriteable "$ASTMP" || Error ERR_WRITEDIR
"\$ASTMP" "$ASTMP"
fi

if [ -z "$ASLOGDIR" ]
then
    ASLOGDIR=$ASDIR/logfiles      ; export ASLOGDIR

    mkdir -p $ASLOGDIR 2>&-
    chmod 777 $ASLOGDIR 2>&-
fi

[ ! -d "$ASLOGDIR" ] && Error ERR_ENVDIR "\$ASLOGDIR"
"$ASLOGDIR"

IsDirWriteable "$ASLOGDIR" || Error ERR_WRITEDIR
"\$ASLOGDIR" "$ASLOGDIR"

# --- For what O/S is this software built
-----

OS_TYPE=`uname -s`
OS_NAME=`uname -n | cut -f1 -d`.`
OS_REV=`uname -r`

case "$OS_TYPE" in
    AIX*) if file $ASDIR/lib/libiq*1 |grep 64-bit
>/dev/null
        then
            OS_TYPE=AIX64
        fi
        ;;

    HP-UX) if file $ASDIR/lib/libiq*1 |grep ELF-64
>/dev/null
        then
            OS_TYPE=HP-UX64
        fi
        ;;

    SunOS) if file $ASDIR/lib/libiq*1 |grep SPARCv9
>/dev/null
        then
            OS_TYPE=SunOS64
        fi
        ;;
esac

# ... Setup LIB
Paths .....

IQ_LIB="$ASDIR/usrlib:$ASDIR/lib:$SYBASE/$SYBASE_OCS/l
ib"

case "$OS_TYPE" in
    AIX) LIBPATH="$IQ_LIB:$LIBPATH"
        YIELDLOOPTIME=40
        SPINLOOPTIME=40
        export LIBPATH YIELDLOOPTIME
        SPINLOOPTIME
        ;;

```



```

AIX64) LIBPATH="$IQ_LIB:$LIBPATH"
      YIELDLOOPTIME=40
      SPINLOOPTIME=40
      AIXTHREAD_SCOPE="S"
      AIXTHREAD_MNRATIO="4:1"
      export LIBPATH YIELDLOOPTIME
SPINLOOPTIME
      export AIXTHREAD_SCOPE AIXTHREAD_MNRATIO
      ;;
HP-UX)  SHLIB_PATH="$IQ_LIB:$SHLIB_PATH"
      export SHLIB_PATH
      ;;
HP-UX64) SHLIB_PATH="$IQ_LIB:$SHLIB_PATH"
      if [ "$OS_REV" = "B.11.11" ] # CR273296
- enable thread patch
      then
      export
PTHREAD_DISABLE_HANDOFF="ON"
      fi
      export SHLIB_PATH
PTHREAD_DISABLE_HANDOFF
      ;;
Linux*) LD_ASSUME_KERNEL=2.4.1 #
Server uses 2.4 threads
      export LD_ASSUME_KERNEL
      ;;
SunOS)  if [ "$OS_REV" = "5.8" ] # .. Fix
for Solaris 2.8. connect
      then
      IQ_LIB="$IQ_LIB:/usr/lib/lwp/32"
      fi
      ;;
SunOS64) if [ "$OS_REV" = "5.8" ] # .. Fix
for Solaris 2.8. connect
      then
      IQ_LIB="$IQ_LIB:/usr/lib/lwp/64"
      fi
SYS_LIB="/usr/lib/sparcv9:/usr/ucblib/sparcv9"
      LD_LIBRARY_PATH_64="{IQ_LIB}:"
      ${SYS_LIB}:%LD_LIBRARY_PATH_64"
      export LD_LIBRARY_PATH_64
      ;;
esac
LD_LIBRARY_PATH="$IQ_LIB:%LD_LIBRARY_PATH"
PATH="$ASDIR/bin:$PATH"
export LD_LIBRARY_PATH PATH
unset IQ_LIB
# ... Show only help or
version? .....
for RUN_IT in $* "no_run_parm"
do
      case "$RUN_IT" in
      -?|-help) continue;;
      -v*) continue;;
      *) break;;
      esac
done
if [ "no_run_parm" = "$RUN_IT" ]
then
      if [ -n "$TMP_LANG" ] # restore original language
      then
      LANG="$TMP_LANG" ; export TMP_LANG
      fi
      echo ""
      $ASDIR/bin/asiqsrv12 $* 2>&1 | sed
's/asiqsrv12/start_asiq/g'
      echo ""
      exit 1
      fi
      sync &
      # ... Expand user's parameter to include all hidden
      parameters .....
      USR_PARM_LIST=""
      USR_ORIG_LIST="$*"
      while [ -n "$1" ]
      do
      USR_PARM_LIST="$USR_PARM_LIST '$1'"
      shift
      done
      set -- `Show_All_Parms $USR_PARM_LIST`
      Get_Default_Parms $*
      # ... Verify parameters being passed
      in .....
      case "$OS_TYPE" in
      AIX) MAX_IQSMEM=512 ;;
      HP-UX) MAX_IQSMEM=2750 ;;
      *) MAX_IQSMEM=9999999 ;;
      esac
      while [ -n "$1" ] # Get Startup Info, Check for
      Errors
      do
      case "$1" in
      -iqsmem) if test "$2" -le $MAX_IQSMEM
      2>&-
      then
      shift 2; continue;
      fi
      Error ERR_SHMEM $MAX_IQSMEM
      ;;
      # ... Extract Special
      Info .....
      xDB) [ -z "$DB_NAME" ] &&
      DB_NAME="$2"
      shift
      ;;
      xLOG) SERVER_LOG="$2"
      shift
      ;;
      xSVR) [ -z "$SERVER_NAME" ] &&
      SERVER_NAME="$2"
      shift
      ;;
      xPORT) PORT_NUM="$2"
      shift
      ;;
      esac
      [ $# -ge 1 ] && shift
      done
      # ... Ok, put it all
      together .....
      # If the environmental variable "IQ_NO_DEFAULTS" is
      set to "YES"
      # then the default parameters will not be added,
      explicit parm only.
      if [ "$IQ_NO_DEFAULTS" = "YES" ]
      then
      DEF_PARM_LIST="(Removed by user)"
      FULL_PARM_LIST="$USR_PARM_LIST"
      # Final List - Defaults Removed

```

```

else
    FULL_PARM_LIST="$USR_PARM_LIST $DEF_PARM_LIST"
    # Final list of all parameters
fi

[ -z "$DB_NAME" ] && DB_NAME="none"
[ -z "$SERVER_NAME" ] && SERVER_NAME="$DB_NAME"

# --- Setup the log file (increment since
last)-----
TOTAL_NUM_LOGS=0

if [ -z "$SERVER_LOG" ] #CR271539 fix "."
in $ASLOGDIR
then
    set -- `cd $ASLOGDIR ; ls -lt $SERVER_NAME.[0-
9]*[0-9].srvlog 2>/dev/null |
    cut -f2 -d.` 0

    TOTAL_NUM_LOGS=$#
    NUM=${1:-1}

    while :
    do
        NUM=`expr \( $NUM + 1 \) % 1000`
        NUM=`printf "%03d" $NUM`

SERVER_LOG="$ASLOGDIR/$SERVER_NAME.$NUM.srvlog"
STDERR_LOG="$ASLOGDIR/$SERVER_NAME.$NUM.stderr"

        [ ! -f $SERVER_LOG ] && break
    done

    LOG_PARM="-o $SERVER_LOG"
else
    # ... Make a stderr file based on the logfile
name .....

    LOG_PARM=""

    STDERR_LOG=`echo $SERVER_LOG |
    sed
's?\....\??g?s?\.svrlog??g?s?\.stdout??g`
    STDERR_LOG=$STDERR_LOG.stderr
fi

export SERVER_NAME SERVER_LOG STDERR_LOG LOG_PARM

# --- Start tails on stdout and stderr files
-----

if touch $SERVER_LOG
then
    echo "" >> $SERVER_LOG # loggings from
the server
    tail -lf $SERVER_LOG &

    LOG_PID=$!
else
    Error ERR_CREATEFILE "$SERVER_LOG"
fi

if touch $STDERR_LOG
then
    echo "" >> $STDERR_LOG # stdout and
stderr
from the server
    tail -lf $STDERR_LOG & # required for HP

    ERR_PID=$!
else
    kill $LOG_PID
    Error ERR_CREATEFILE "$STDERR_LOG"
fi

RET_CODE="1" ; export RET_CODE

trap 'rm -rf $TMP_FILE; kill $LOG_PID $ERR_PID 2>&- ;
exit $RET_CODE' 0 1 2 3

# --- Display Startup Message
-----
cat >> $STDERR_LOG <<-!
Starting server $SERVER_NAME on $OS_NAME at
port $PORT_NUM
!

# --- Find IQ & OC versions (can take a few seconds)
-----

OC_VER=`$SYBASE/$SYBASE_OCS/bin/bcp -v 2>/dev/null |
grep '/1' |cut -f2,3 -d/'`

IQ_VER=`strings -a $ASDIR/lib/libiq*1 2>/dev/null |
grep "IDENT=" |cut -f2,5 -d/'`

# --- Display rest of startup info
-----
cat >> $STDERR_LOG <<-!

Run Directory : $START_DIR
Server Exe : $ASDIR/bin/asiqsrv12
Server Output Log : $SERVER_LOG
Server Version : ${IQ_VER:-N/A}
OpenClient Version : ${OC_VER:-N/A}
User Parameters : $USR_ORIG_LIST
Default Parameters : $DEF_PARM_LIST

!

# ... Issue any warnings to stderr
file .....

if [ "$TOTAL_NUM_LOGS" -gt 500 ]
then
    Warning "WARN_LOGS"
fi

# ... If -cl used in conjunction with -c, issue
warning .....

if expr "$USR_PARM_LIST $DEF_PARM_LIST" : ".*-c " > /
dev/null
then
    if expr "$USR_PARM_LIST $DEF_PARM_LIST" :
".*-cl " > /dev/null
then
        Warning "WARN_MEMORY"
    fi
fi

# --- Create Scripts to start server
-----

PRINT_ARG2="awk '{print \$2}'" ; export
PRINT_ARG2

echo '
# This will remove/set soft limits before
starting server
# This c shell allows the usage of the
"unlimit" command

set OS_HW=`uname -sm` # Itanium and unlimit
do not mix

if ( "$OS_HW" != "HP-UX ia64" ) then
    ( unlimit >&! /dev/null ) && unlimit
endif

# ... limit
discriptors .....

if ( '$OS_TYPE' != AIX && '$OS_TYPE' != AIX64 )
then
    set NFILE=`limit descriptors |
'${PRINT_ARG2}'`
    set NFILE_MAX=4096

if ( $NFILE == unlimited ) set
NFILE=2100100
if ( $NFILE > $NFILE_MAX )
limit descriptors $NFILE_MAX
endif

```

```

# ... limit coredump to 64 blocks
(CR263753) .....

# Any core file size is limited to 32k unless
end-user sets
# env var IQ_UNLIMIT_CORE to YES before
starting server

if ( "$IQ_UNLIMIT_CORE" == "YES" ) then
    echo "NOTICE: Limits on core file
size have been removed"
    echo ""
else
    set CDUMP=`limit coredumpsize |
'${PRINT_ARG2}'`
    set CDUMP_MAX=32
    if ( $CDUMP == unlimited ) set
CDUMP=2100100
    if ( $CDUMP > $CDUMP_MAX ) limit
coredump $CDUMP_MAX
endif

# ... limit stack
size .....

set STACK=`limit stacksize | '${PRINT_ARG2}'`
set STACK_MAX=8192

if ( $STACK == unlimited ) set STACK=2100100
if ( $STACK > $STACK_MAX ) limit stacksize
$STACK_MAX

# ... Reset the language and start
server .....

if ( "$TMP_LANG" != " " ) setenv LANG
"$TMP_LANG"

dbspawn -v -f -p asiqsrv12 '$FULL_PARM_LIST
$LOG_PARM' >>&! '$STDERR_LOG'

exit $status
' > $TMP_FILE

sleep 1 # Need a sec to display stdout &
stderr

csh -f $TMP_FILE ; RET_CODE=$?

sleep 1 # Need a sec to display stdout &
stderr

# ... How did we do .....

if [ $RET_CODE = 0 ]
then
    # started okay!
    # Get the process id and other server info, and
put them
    # in the server info for for use with stop_asiq

START_ASIQ_FILE=/tmp/.start_asiq.log

if [ ! -f $START_ASIQ_FILE ]
then
    touch $START_ASIQ_FILE
    chmod 666 $START_ASIQ_FILE
fi

set -- `grep -i "process id" $STDERR_LOG`
## kt: Language Watch

if [ $# -gt 1 ]
then
    shift `expr $# - 1`

    echo $1
STARTED:`date "+%y/%m/%d.%T"` \
SVR:$SERVER_NAME \
DB:$DB_NAME \
PORT:$PORT_NUM >>
$START_ASIQ_FILE
fi

```

```

else
    MSG="Server started successfully"
fi

MSG="Server failed to start."
ERR="Possible cause:"

set -- `grep " ERROR:" $STDERR_LOG` ""

case "$3" in
-82) MSG="$MSG $ERR\n\t- Server name
is already in use on network."
;;
-85) MSG="$MSG $ERR\n\t- Port number
is invalid or already in use."
;;
-300) MSG="$MSG $ERR
- Invalid or conflicting parameter or database
name
- Port number already in use
- Server name already in use on network"
*) ERR=""
;;
*)
esac

fi

echo "\n$MSG\n"

rm -rf $TMP_FILE

exit $RET_CODE

# --- eof ---

```

gen_streams_new.ksh

```

#!/bin/ksh

if (( $# < 2 ))
then
    echo "usage: $0 seed scale_factor
num_streams"
    exit
fi

PATH=/export/home/sybase/ASIQ-
12_5/bin:/export/home/sybase/OCS-
12_5/bin:/usr/openwin/bin:/bin:./usr/dist/pkgs/forte_
dev/SUNWspro/bin:/usr/ccs/bin:/usr/dt/bin:/usr/dist/pk
gs/devpro,v4.0/5.x-
sparc/bin:/usr/dist/local/exe:/usr/dist/exe:/usr/ucb:/
usr/sbin:/net/josie/export/home18/rgostan/bin:/export/
home/sybase/run/scripts:/etc:./export/home/sybase/run
/tpch/appendix/dbgen
export PATH
export DSS_PATH=/export/home/sybase/run/scripts;
export
DSS_CONFIG=/export/home/sybase/run/tpch/appendix/dbgen
;
export DSS_DIST=dists.dss;
export
DSS_QUERY=/export/home/sybase/run/tpch/appendix/templa
tes/queries;
#export
DSS_QUERY=/export/home/sybase/run/tpch/appendix/templa
tes/queries.debug;

seed=$1;
sf=$2;
ns=$3

i=0
while ((i<=ns))
do
    qgen -c -p $i -l qparm${i}.txt -i
    $DSS_QUERY/init.sql -t $DSS_QUERY/complete.sql -r
    $seed -s $sf \
    1 2 3 4 5 6 7 8 9 10 11 12 13 14 15 16 17 18 19
    20 21 22 > stream${i}.sql
    ((seed=seed+1))
    ((i=i+1))
done

```

```
((last_seed=seed-1))
echo $last_seed
```

ACID Test Execution Code

atomicity test

```
dbtest acid_atomic_main.tst > acid_atomic_main.out
```

consistency test

```
dbtest acid_consistency_main.tst >
acid_consistency_main.out
```

isolation tests

```
dbtest acid_isolation_main1.tst >
acid_isolation_main1.out
dbtest acid_isolation_main2.tst >
acid_isolation_main2.out
dbtest acid_isolation_main3.tst >
acid_isolation_main3.out
dbtest acid_isolation_main4.tst >
acid_isolation_main4.out
dbtest acid_isolation_main5.tst >
acid_isolation_main5.out
dbtest acid_isolation_main6.tst >
acid_isolation_main6.out
```

durability test

```
dbtest acid_durability_main.tst >
acid_durability_main.out
```

ACID Test Source Code

acid_atomic_main.tst

```
stringconnect "dsn=tpch;"

execute {select now(*)} into times
print 'Atomicity test start = ', times
print ' '

include 'acid_functions.tst'
commit

%
% Atomicity test with rollback
%
print ' '
print 'Starting atomicity test with rollback'
print ' '

run test 'acid_atomic_setup.tst'

stringconnect "dsn=tpch;"
let counter=0

LOOP {
open cur2 {select ord, line, delta from aa_whattodo
where seqnum=^}
substitute counter
print 'counter = ',counter
fetch cur2 into ord, line, delta
if ROWSTATUS != FOUND then { BREAK LOOP } endif
```

```
print 'Acid transaction for: o_key-',ordr,' l_key-',
line,' delta-',delta

execute {select o_totalprice, l_quantity,
l_extendedprice
from orders, lineitem
where o_orderkey = l_orderkey and o_orderkey = ^
and l_linenumber = ^}
substitute ord, line
into o_total, l_quan, l_price
print 'o_totalprice = ',o_total,' l_quantity =
',l_quan,
l_extendedprice = ',l_price

execute {call acid_transaction(^, ^, ^, rprice,
quantity,
tax, disc, extprice,
ototal)
} substitute ord, line, delta
close cur2
let counter = counter+1

rollback
execute {select now(*)} into times
print 'rollback : ', times

execute {select o_totalprice, l_quantity,
l_extendedprice
from orders, lineitem
where o_orderkey = l_orderkey and o_orderkey = ^
and l_linenumber = ^}
substitute ord, line
into o_total, l_quan, l_price
print 'o_totalprice = ',o_total,' l_quantity =
',l_quan,
l_extendedprice = ',l_price
print ' '
} ENDLLOOP

commit

%
% Atomicity test with commit
%
stringconnect "dsn=tpch;"
print ' '
print 'Starting atomicity test with commit '
print ' '
run test 'acid_atomic_setup.tst'

stringconnect "dsn=tpch;"

open curl {select ord, line, delta from aa_whattodo}
LOOP {
fetch curl into ord, line, delta
if ROWSTATUS != FOUND then { BREAK LOOP } endif
print 'Acid transaction for: o_key-',ordr,' l_key-',
line,' delta-',delta
execute {select o_totalprice, l_quantity,
l_extendedprice
from orders, lineitem
where o_orderkey = l_orderkey and o_orderkey = ^
and l_linenumber = ^}
substitute ord, line
into o_total, l_quan, l_price
print 'o_totalprice = ',o_total,' l_quantity =
',l_quan,
l_extendedprice = ',l_price

execute {call acid_transaction(^, ^, ^, rprice,
quantity,
tax, disc, extprice,
ototal)
} substitute ord, line, delta
commit
execute {select now(*)} into times
print 'commit : ', times

execute {select o_totalprice, l_quantity,
l_extendedprice
from orders, lineitem
where o_orderkey = l_orderkey and o_orderkey = ^
and l_linenumber = ^}
substitute ord, line
into o_total, l_quan, l_price
```

```

print 'o_totalprice = ',o_total,' l_quantity =
',l_quan,
      l_extendedprice = ',l_price
print ' '
} ENDLOOP

close curl
commit

execute {select now(*)} into times
print 'Atomicity test end = ', times

End Test

=====
acid_atomic_setup.tst
=====

Description      "Creates aa_whattodo table"

stringconnect "dsn=tpch;"

% Drop Table if found

allow error -141
execute { commit }
execute { drop table aa_whattodo }
allow no error

execute {
create table aa_whattodo (
                segnum      int      not null,
                ordr         int      not null,
                line         int      null,
                delta        int      null)
}

print 'aa_whattodo CREATED!!'
execute {select now(*)} into times
print 'time = ', times

fetch {select count(*) from aa_whattodo } into ROWS
assert ROWS = 0

print 'Number of rows before load: ',ROWS

LOOP ({let counter = 0}; {counter < 5}; {let counter =
counter + 1})
{
    execute {call generate_acid_values()}
            into orderkey, linenum, delta
    execute {insert into aa_whattodo values ( ^ , ^
, ^ , ^ ) }
            substitute counter, orderkey,
linenum, delta
    print counter, ' ',orderkey, ' ',linenum,' ',
delta
}
ENDLOOP

commit

fetch {select count(*) from aa_whattodo } into ROWS
assert ROWS = 5

print 'Number of rows after load: ',ROWS

disconnect

End Test

=====

```

acid_consistency_main.tst

```

=====
stringconnect "dsn=tpch;"

execute {select now(*)} into times
print 'Consistency test start = ', times
print ' '

include 'acid_functions.tst'

```

```

run test 'acid_consistency_setup.tst'

execute {select now(*)} into times
print 'Consistency test time = ', times
print ' '

run test '-o' 'acid_consistency_q1.ot'
'acid_consistency_query.tst'
disconnect

start test '-o' 'acid_consist_user1.ot' 'stream=1'
'acid_consistency_txn.tst'
sleep 1000
start test '-o' 'acid_consist_user2.ot' 'stream=2'
'acid_consistency_txn.tst'
sleep 1000
start test '-o' 'acid_consist_user3.ot' 'stream=3'
'acid_consistency_txn.tst'
sleep 1000
start test '-o' 'acid_consist_user4.ot' 'stream=4'
'acid_consistency_txn.tst'
sleep 1000
start test '-o' 'acid_consist_user5.ot' 'stream=5'
'acid_consistency_txn.tst'
sleep 1000
start test '-o' 'acid_consist_user6.ot' 'stream=6'
'acid_consistency_txn.tst'
sleep 1000
start test '-o' 'acid_consist_user7.ot' 'stream=7'
'acid_consistency_txn.tst'
sleep 1000
start test '-o' 'acid_consist_user8.ot' 'stream=8'
'acid_consistency_txn.tst'
sleep 1000
start test '-o' 'acid_consist_user9.ot' 'stream=9'
'acid_consistency_txn.tst'

synchronize 10
% let the log flush...
sleep 10000

stringconnect "dsn=tpch;"
run test '-o' 'acid_consistency_q2.ot'
'acid_consistency_query.tst'

execute {select now(*)} into times
print 'Consistency test end = ', times
print ' '

End Test

=====
acid_consistency_query.tst
=====

stringconnect "dsn=tpch;"

open curl {select stream, seqnum, ord, line, delta
from acid_table
            where seqnum > 10 order by seqnum}

print ' '

let n=1
LOOP {
    fetch curl into str, seq, ord, lin, delta

    fetch {select round(cast(o_totalprice as numeric
(26,16)),2)
            from orders where o_orderkey=^ }
            substitute ord into o_price

    if ROWSTATUS != FOUND then { BREAK LOOP } endif
    if n > 25 then { BREAK LOOP } endif

    fetch { call acid_single_query (^) } substitute ord
into l_total

    fetch {select cast(^ as numeric(12,2)) } substitute
o_price into o_price
    fetch {select cast(^ as numeric(12,2)) } substitute
l_total into l_total

    print 'orderkey = ', ord, '          o_totalprice = ',
o_price,
          '          acid query = ' , l_total
}

```

```

    ASSERT (o_price = l_total)
      then { print 'Did not compare correctly' }
ENDASSERT
  let n=n+1
} ENDLLOOP
disconnect
END Test

```

acid_consistency_setup.tst

```

=====
stringconnect "dsn=tpch;"

% Drop Table if found
allow error -141
execute { drop table acid_table }
allow no error

execute {
create table acid_table (
    stream int    not null,
    segnum  int    not null,
    ordr    int    not null,
    line    int    null,
    delta   int    null)
}

execute {checkpoint}

print 'acid_table CREATED!!'

fetch {select count(*) from acid_table } into ROWS
assert ROWS = 0
print 'Number of rows before load: ',ROWS
commit

LOOP ({let i = 1}; {i <= 9}; { let i = i + 1})
{
  LOOP ({let j = 1}; {j <= 100}; {let j = j + 1})
  {
    execute { call generate_acid_values() } into
    ordr, line, delta
    execute { insert into acid_table values
    (^,^,^,^,^,^) }
    substitute i,j,ordr,line,delta
  } endloop
  print (j-1)*i
} endloop

commit

fetch {select count(*) from acid_table } into ROWS
assert ROWS = 900
print 'Number of rows after load: ',ROWS

End Test

```

acid_consistency_txn.tst

```

=====
stringconnect "dsn=tpch;"

execute {select now(*)} into times
print 'Consistency test start = ', times
print ' '

LOOP ({let i = 1}; {i <= 100}; { let i = i + 1})
{
  fetch {select ordr, line, delta from acid_table
        where stream=^ and segnum=^ }
        substitute stream, i
  if ROWSTATUS != FOUND then { print 'not enough rows'
  BREAK LOOP }
  endif

  print 'Acid Transaction ',i,
  ': o_key-', ordr , ' l_key-', line , '
  delta-', delta

```

```

execute {call acid_transaction( ^, ^, ^, rprice,
quantity,
                                tax, disc, extprice,
ototal)
} substitute ordr, line, delta
commit
print 'committed'
sleep 1000
}
ENDLOOP

```

```

synchronize 10

End Test

```

acid_durability_main.tst

```

=====
stringconnect "dsn=tpch;"

execute {select now(*)} into times
print 'Durability test start = ', times
print ' '

include 'acid_functions.tst'
run test 'acid_durability_setup.tst'

execute {select now(*)} into times
print 'Durability test time = ', times
print ' '

run test '-o' 'acid_durability_q1.ot'
'acid_durability_query.tst'

start test '-o' 'acid_dura_user1.ot' 'stream=1'
'acid_durability_txn.tst'
sleep 1000
start test '-o' 'acid_dura_user2.ot' 'stream=2'
'acid_durability_txn.tst'
sleep 1000
start test '-o' 'acid_dura_user3.ot' 'stream=3'
'acid_durability_txn.tst'
sleep 1000
start test '-o' 'acid_dura_user4.ot' 'stream=4'
'acid_durability_txn.tst'
sleep 1000
start test '-o' 'acid_dura_user5.ot' 'stream=5'
'acid_durability_txn.tst'
sleep 1000
start test '-o' 'acid_dura_user6.ot' 'stream=6'
'acid_durability_txn.tst'
sleep 1000
start test '-o' 'acid_dura_user7.ot' 'stream=7'
'acid_durability_txn.tst'
sleep 1000
start test '-o' 'acid_dura_user8.ot' 'stream=8'
'acid_durability_txn.tst'
sleep 1000
start test '-o' 'acid_dura_user9.ot' 'stream=9'
'acid_durability_txn.tst'

synchronize 10

execute {select now(*)} into times
print 'Durability test time = ', times
print ' '

```

```

run test '-o' 'acid_durability_q2.ot'
'acid_durability_query.tst'

execute {select now(*)} into times
print 'Durability test end = ', times
print ' '

End Test

```

acid_durability_query.tst

```

=====
stringconnect "dsn=tpch;"

```

```

open curl {select stream, seqnum, ordr, line, delta
from acid_table
      where seqnum > 5 order by seqnum}
print ' '
let n=1
LOOP {
  fetch curl into str, seq, ord, lin, delta
  fetch {select round(cast(o_totalprice as numeric
(26,16)),2)
      from orders where o_orderkey=^ }
      substitute ord into o_price
  if ROWSTATUS != FOUND then { BREAK LOOP } endif
  if n > 50 then { BREAK LOOP } endif
  fetch { call acid_single_query (^) } substitute ord
into l_total
  fetch {select cast(^ as numeric(12,2)) } substitute
o_price into o_price
  fetch {select cast(^ as numeric(12,2)) } substitute
l_total into l_total
  print 'orderkey = ', ord, '      o_totalprice = ',
o_price,
      '      acid query = ', l_total
  ASSERT (o_price = l_total)
  then { print 'Did not compare correctly' }
ENDASSERT
  let n=n+1
} ENDOLOOP
disconnect
END Test

```

acid_durability_setup.tst

```

stringconnect "dsn=tpch;"
% Drop Table if found
allow error -141
execute { drop table acid_table }
allow no error
execute {
create table acid_table (
      stream int      not null,
      seqnum  int      not null,
      ordr    int      not null,
      line    int      null,
      delta   int      null)
}
execute {checkpoint}
print 'acid_table CREATED!!!'
fetch {select count(*) from acid_table } into ROWS
assert ROWS = 0
print 'Number of rows before load: ',ROWS
commit
LOOP ({let i = 1}; {i <= 9}; { let i = i + 1})
{
  LOOP ({let j = 1}; {j <= 200}; { let j = j + 1})
  {
    execute { call generate_acid_values() } into
ordr, line, delta
    execute { insert into acid_table values
(^,^,^,^,^,^) }
      substitute i,j,ordr,line,delta
  } endloop
  print (j-1)*i
} endloop
commit
execute {checkpoint}

```

```

fetch {select count(*) from acid_table } into ROWS
print 'Number of rows after load: ',ROWS
End Test
=====
acid_durability_txn.tst
=====
stringconnect "dsn=tpch;"
execute {select now(*)} into times
print 'Durability test start = ', times
print ' '
print 'stream trans. o_key  l_key  p_key  s_key
delta  date_t '
LOOP ({let i = 1}; {i <= 200}; { let i = i + 1})
{
  fetch {select ordr, line, delta from acid_table
      where stream=^ and seqnum=^ }
      substitute stream, i
  if ROWSTATUS != FOUND then { print 'not enough rows'
BREAK LOOP }
  endif
  execute {select l_partkey, l_suppkey from lineitem
      where l_orderkey=^ and l_linenumber=^}
      substitute ordr, line
      into p_key, s_key
  execute {call acid_transaction(^, ^, ^)
      } substitute ordr, line, delta
      into rprice, quantity, tax, disc, extprice,
ototal
  assert SQLCODE=0 then { DIE } endassert
  commit
  execute {select now(*)} into times
  print stream, ' ',
      'txn ', i, ' ',
      ordr, ' ',
      line, ' ',
      p_key, ' ',
      s_key, ' ',
      delta, ' ',
      times, ' '
  sleep 1000
}
ENDLOOP
synchronize 10
End Test

```

acid_functions.tst

```

print 'creating the sleep procedure'
allow error -265
execute { DROP PROCEDURE dbo.sleep}
allow no error
execute{ create procedure dbo.sleep(in sleep_time
integer default null)
begin
  declare command varchar(255);
  select 'xp_cmdshell ''sleep '+str(sleep_time)+'''
into command;
  execute immediate command
end;
}
print 'creating the Acid Transaction'
allow error -265
execute { DROP PROCEDURE acid_transaction }
allow no error

```

```

execute{ CREATE PROCEDURE acid_transaction(
    IN o_key      INT,
    IN l_key      INT,
    IN delta      INT,
    OUT rprice    Numeric(18,8),
    OUT quantity  INT,
    OUT tax       Numeric(18,8),
    OUT disc      Numeric(18,8),
    OUT extprice  Numeric(18,8),
    OUT ototal    Numeric(18,8)
)
ON EXCEPTION RESUME
BEGIN
    DECLARE pkey      INT ;
    DECLARE skey      INT ;
    DECLARE cost      NUMERIC(18,8) ;
    DECLARE new_extprice NUMERIC(18,8) ;
    DECLARE new_ototal NUMERIC(18,8) ;
    DECLARE new_quantity INT ;
    DECLARE c_sqlstate char(5);
    LOOP1: LOOP
        COMMIT;
        SELECT o_totalprice
            INTO ototal
            FROM orders
            WHERE o_orderkey = o_key ;
        SELECT l_quantity,
            l_extendedprice,
            l_partkey,
            l_suppkey,
            l_tax,
            l_discount
            INTO quantity,
            extprice,
            pkey,
            skey,
            tax,
            disc
            FROM lineitem
            WHERE l_orderkey = o_key
            AND l_linenumber = l_key;
        -- CLEAN UP IMPRECICE NUMBERS
        SET ototal = ototal -
"TRUNCATE"("truncate"(extprice*(1-disc),2)*(1+tax),2);
        SET rprice = "TRUNCATE"((extprice / quantity),2);
        SET cost = "TRUNCATE"((rprice * delta),2);
        SET new_extprice = extprice + cost;
        SET new_ototal = "TRUNCATE"(new_extprice * (1.0 -
disc),2);
        SET new_ototal = "TRUNCATE"(new_ototal * (1.0 +
tax),2);
        SET new_ototal = ototal + new_ototal ;
        SET new_quantity = quantity + delta ;
        --
        -- Update LineItem
        --
        UPDATE lineitem
            SET l_quantity = new_quantity,
            l_extendedprice = new_extprice
            WHERE l_orderkey=o_key
            AND l_linenumber=l_key;
        SELECT SQLSTATE INTO c_sqlstate;
        IF c_sqlstate = '00000' THEN
            --
            -- Update Orders
            --
            UPDATE orders
                SET o_totalprice = new_ototal
                WHERE o_orderkey = o_key;
            SELECT SQLSTATE INTO c_sqlstate;
            IF c_sqlstate = '00000' THEN
                INSERT INTO history VALUES ( pkey, skey,
o_key, l_key, delta, now(*) ) ;
                SELECT SQLSTATE INTO c_sqlstate;
                IF c_sqlstate = '00000' THEN
                    LEAVE LOOP1;
                END IF;
            END IF;
        END IF;
    END LOOP LOOP1;
    RETURN(0);
END;
}

```

print 'Acid transaction created'

```

print ' '
print 'Creating Acid query'

allow error -265
execute { DROP PROCEDURE acid_single_query }
allow no error

execute{
CREATE PROCEDURE acid_single_query( IN o_key INT, OUT
o_total NUMERIC(26,16) )
BEGIN
    SELECT o_total =
        sum ("truncate" ("truncate"(
numeric(26,16)),2) *
        round(cast(l_extendedprice as
numeric(26,16)),2) *
        (1 - round(cast(l_discount as
numeric(26,16)),2)),2)
        * (1 + round(cast(l_tax as numeric
(26,16)),2)), 2))
        FROM lineitem WHERE l_orderkey = o_key;
    END
}

print 'Acid query created'
print ' '

print 'Creating Generate_acid_values function'

allow error -265
execute { DROP PROCEDURE generate_acid_values }
allow no error

execute{
create procedure generate_acid_values(
out orderkey int,
out linenumber int,
out delta int)

BEGIN

    declare seed          bigint;
    declare rand_dbl      double precision;
    declare rand_int      int;
    declare out_key       int;

    declare times cursor for select datediff
(millisecond,convert(char(10),getdate(), 116),now(*));
    declare randoml cursor for select rand(seed);
    declare random cursor for select rand();
    declare get_order cursor for
        select o_orderkey from orders where o_orderkey
= rand_int;
    declare get_linenumber cursor for
        select max(l_linenumber) from lineitem
        where l_orderkey = orderkey;

    open times;
    fetch next times into seed;
    open randoml;
    fetch next randoml into rand_dbl;

    set out_key = 0;
    loop1:
    while out_key = 0 LOOP
        open random;
        open get_order;

        fetch next random into rand_dbl;
        set rand_int = rand_dbl * 6001215 +1;
        fetch next get_order into out_key;

        close random;
        close get_order;
    end loop loop1;

    set orderkey = out_key;

    open get_linenumber;
    fetch next get_linenumber into linenumber;
    close get_linenumber;

    open random;
    fetch next random into rand_dbl;
    set delta = rand_dbl * 100 + 1;
    close random;
}

```



```

END
}
commit
execute {checkpoint}
print 'Generate_acid_values function created'
print ' '
print 'Creating Generate_Ps_Values function'

allow error -265
execute { DROP PROCEDURE generate_ps_values }
allow no error

execute{
create procedure generate_ps_values(
out partkey    int,
out suppkkey   int)

BEGIN

declare seed          bigint;
declare rand_dbl     double precision;
declare rand_int     int;
declare out_key      int;
declare counter      int;

declare times cursor for select datediff
(millisecond,convert(char(10),getdate(), 116),now(*));
declare random1 cursor for select rand(seed);
declare random cursor for select rand();
declare get_supp cursor for
select ps_suppkkey from partsupp
where ps_suppkkey = rand_int;
declare get_part cursor for
select ps_partkey from partsupp
where ps_suppkkey = suppkkey;

open times;
fetch next times into seed;
open random1;
fetch next random1 into rand_dbl;
close random1;

set out_key = 0;
while out_key = 0 LOOP
open random;
open get_supp ;

fetch next random into rand_dbl;
set rand_int = rand_dbl * 10000 +1;
fetch next get_supp into out_key;

close random;
close get_supp ;
end loop;
set suppkkey = out_key;

set out_key = 0;
set counter = 0;
open random;
open get_part;
fetch next random into rand_dbl;
set rand_int = rand_dbl * 10 +1;

loop1:
while counter < rand_int LOOP
set counter = counter+1;
fetch next get_part into out_key;
end loop loop1;

set partkey = out_key;
close random;
close get_part;

END
}
commit
execute {checkpoint}
print 'Generate_Ps_Values function created'
print ' '

print 'Creating history table'

allow error -141
execute { drop table history }

```

```

allow no error

execute {
create table history (
h_p_key    unsigned INT NOT NULL ,
h_s_key    unsigned INT NOT NULL ,
h_o_key    unsigned INT NOT NULL ,
h_l_key    INT NOT NULL,
h_delta    INT NOT NULL,
h_date_t   TIMESTAMP NOT NULL)
}

commit
execute {checkpoint}
print 'history table created'
print ' '

```

===== acid_isolation_main1.tst =====

```

stringconnect "dsn=tpch;"

execute {select now(*)} into times
print ' '
print ' '
print 'Isolation test 1'
print 'start = ', times
print ' '

include 'acid_functions.tst'
include 'acid_isolation_setup.tst'

start test 'acid_isolation_test1.tst'
start test 'acid_isolation_test1_query.tst'

End Test

```

===== acid_isolation_main2.tst =====

```

stringconnect "dsn=tpch;"

execute {select now(*)} into times
print ' '
print ' '
print 'Isolation test 2'
print 'start = ', times
print ' '

include 'acid_functions.tst'
include 'acid_isolation_setup.tst'

start test 'acid_isolation_test2.tst'
start test 'acid_isolation_test2_query.tst'

End Test

```

===== acid_isolation_main3.tst =====

```

stringconnect "dsn=tpch;"

execute {select now(*)} into times
print ' '
print ' '
print 'Isolation test 3'
print 'start = ', times
print ' '
print 'Isolation test start = ', times

include "acid_functions.tst"
include 'acid_isolation_setup.tst'

start test 'acid_isolation_test3_transaction1.tst'
start test 'acid_isolation_test3_transaction2.tst'

End Test

```

acid_isolation_main4.tst

```
=====
stringconnect "dsn=tpch;"

execute {select now(*)} into times
print ' '
print ' '
print 'Isolation test 4'
print 'start = ', times
print ' '
print 'Isolation test start = ', times

include 'acid_functions.tst'
include 'acid_isolation_setup.tst'

start test 'acid_isolation_test4_transaction1.tst'
start test 'acid_isolation_test4_transaction2.tst'

End Test
=====
```

acid_isolation_main5.tst

```
=====
stringconnect "dsn=tpch;"

execute {select now(*)} into times
print ' '
print ' '
print 'Isolation test 5'
print 'start = ', times
print ' '

include 'acid_functions.tst'
include 'acid_isolation_setup.tst'

start test 'acid_isolation_test5_transaction1.tst'
start test 'acid_isolation_test5_query.tst'

End Test
=====
```

acid_isolation_main6.tst

```
=====
stringconnect "dsn=tpch;"

execute {select now(*)} into times
print ' '
print ' '
print 'Isolation test 6'
print 'start = ', times
print ' '

include 'acid_functions.tst'
include 'acid_isolation_setup.tst'

start test '-u' 'acid_isolation_test6_query.tst'
start test 'acid_isolation_test6_transaction1.tst'

End Test
=====
```

acid_isolation_setup.tst

```
=====
stringconnect "dsn=tpch;"

% Drop Table if found

allow error -141
execute { commit }
execute { drop table acid_isolation_table }
allow no error

execute {
create table acid_isolation_table (
            ordr          int      not null,
            line          int      null,
            delta         int      null)
}
=====
```

```
execute {checkpoint}

print 'acid_isolation_table CREATED!!'
execute {select now(*)} into times
print 'time = ', times

fetch {select count(*) from acid_isolation_table }
into ROWS
assert ROWS = 0

print 'Number of rows before load: ',ROWS

execute {call generate_acid_values()} into orderkey,
linenumber,delta
execute {insert into acid_isolation_table values ( ^ ,
^ , ^ ) }
substitute orderkey, linenumber, delta
print orderkey, ' ',linenumber,' ', delta

commit

fetch {select count(*) from acid_isolation_table }
into ROWS
assert ROWS = 1

print 'Number of rows after load: ',ROWS

disconnect

End Test
=====
```

acid_isolation_test1.tst

```
=====
stringconnect "dsn=tpch;"

execute {select ordr, line, delta from
acid_isolation_table}
into ordr, line, delta

print 'The following are the data input values for
the ACID Transaction.'
print '(user 1) o_key-',ordr, ' l_key-', line, '
delta-',delta

execute {call acid_transaction( ^, ^, ^,
rprice, quantity, tax, disc, extprice, ototal)
} substitute ordr, line, delta

execute {select now(*)} into times
print 'User 1 waiting to commit = ', times
print ' '
synchronize 2
sleep 10000
execute {select now(*)} into times
print 'User 1 about to commit = ', times
commit

execute { select round(cast(o_totalprice as numeric
(18,2)),2)
from orders where o_orderkey = ^}
substitute ordr into o_total
print 'User 1 new values: '
print 'user 1 ordr= ', ordr
print 'user 1 o_total= ', o_total
print ' '

End Test
=====
```

acid_isolation_test1_query.tst

```
=====
stringconnect "dsn=tpch;"

synchronize 2
print ' '
execute {select now(*)} into times
print 'User 2 start query = ', times

execute {select ordr from acid_isolation_table}
into ordr
=====
```

```

print 'user 2 ordr = ', ordr
fetch { call acid_single_query (^) } substitute ordr
into o_total
print 'user 2 o_total=' , o_total
print ' '

```

```

execute {select now(*)} into times
print 'User 2 completed query = ', times

```

disconnect

END Test

acid_isolation_test2.tst

```

stringconnect "dsn=tpch;"

```

```

execute {select ordr, line, delta from
acid_isolation_table}
into ordr, line, delta

```

```

print 'The following are the data input values for
the ACID Transaction.'

```

```

print '(user 1) o_key-',ordr, ' l_key-', line, '
delta-',delta

```

```

execute {call acid_transaction( ^, ^, ^,
rprice, quantity, tax, disc, extprice, ototal)
} substitute ordr, line, delta

```

```

execute {select now(*)} into times
print 'User 1 waiting to roll back = ', times
print ' '
synchronize 2
sleep 10000
execute {select now(*)} into times
print 'User 1 about to roll back = ', times
rollback

```

```

execute { select round(cast(o_totalprice as numeric
(18,2)),2)
from orders where o_orderkey = ^}
substitute ordr into o_total
print 'User 1 new values: '
print 'user 1 ordr= ', ordr
print 'user 1 o_total= ', o_total
print ' '

```

End Test

acid_isolation_test2_query.tst

```

stringconnect "dsn=tpch;"

```

```

synchronize 2
print ' '
execute {select now(*)} into times
print 'User 2 start query = ', times

```

```

execute {select ordr from acid_isolation_table}
into ordr

```

```

print 'user 2 ordr = ', ordr
fetch { call acid_single_query (^) } substitute ordr
into o_total
print 'user 2 o_total=' , o_total
print ' '

```

```

execute {select now(*)} into times
print 'User 2 completed query = ', times

```

disconnect

END Test

acid_isolation_test3_transaction1.tst

```

stringconnect "dsn=tpch;"

```

```

execute {select now(*)} into times
print 'Isolation test 3 test start = ', times
print ' '

```

```

execute {select ordr, line, delta from
acid_isolation_table}
into ordr, line, delta

```

```

print 'User 1 -- The input data values for User 1
Acid Transaction.'

```

```

print 'User 1 -- o_key = ',ordr
print 'User 1 -- l_key = ',line
print 'User 1 -- delta1 = ',delta

```

```

print ' '
execute {select now(*)} into times
print 'User 1 -- Starting the Acid Transaction: ',
times

```

```

execute {call acid_transaction( ^, ^, ^)}
substitute ordr, line, delta
into rprice, quantity, tax, disc, extprice,
ototal

```

```

print ' '
execute {select now(*)} into times
print 'User 1 -- Acid Transaction complete: ', times
print '30 second timer started'

```

```

SYNCHRONIZE 2
sleep 30000

```

```

print ' '
execute {select now(*)} into times
print 'User 1 -- starting commit: ', times

```

```

commit
print ' '
execute {select now(*)} into times
print 'User 1 -- transaction commit complete: ',
times

```

```

print ' '
print 'USER 1 -- original extendedprice = ', extprice
print 'USER 1 -- original quantity = ', quantity

```

```

fetch { select cast(^ as numeric(18,6))
+ (cast(^ as numeric(18,6))*(cast (^ as
numeric(18,6))
/cast (^ as numeric(18,6)))) }
substitute extprice, delta, extprice, quantity
into result1
% make it format nicely...
execute { select cast(^ as numeric(18,2)) }
substitute result1 into result2

```

```

print ' '
print 'User 1 -- result1 = '
print ' txnl_extendedprice + (delta1 *
(txnl_extendedprice/txnl_quantity))'
print 'User 1 -- result1= ', result2
print ' '

```

```

disconnect
End Test

```

acid_isolation_test3_transaction2.tst

```

stringconnect "dsn=tpch;"

```

```

execute {select ordr, line, delta from
acid_isolation_table}
into ordr, line, delta
% generate a new set of values; we only use delta2
execute { call generate_acid_values()} into ordr2,
line2, delta2

```

```

print ' '
print 'User 2 - The input data values for the Acid
Transaction.'
print 'User 2 -- o_key = ',ordr
print 'User 2 -- l_key= ',line
print 'User 2 -- delta2 = ',delta2

```

```

SYNCHRONIZE 2
sleep 5000

print ' '
execute {select now(*)} into times
print 'User 2 -- Starting the Acid Transaction: ',
times

execute {call acid_transaction( ^, ^, ^ ) }
substitute ordr, line, delta2
into rprice, quantity, tax, disc, extprice,
ototal
execute {select round(cast(^ as numeric(20,6)),2) }
substitute extprice into extprice2

sleep 5000
print ' '
execute {select now(*)} into times
print 'User 2 -- About to commit: ', times
commit

execute {select now(*)} into times
print 'User 2 -- transaction commit complete: ', times

print ' '

print 'USER 2 -- original extendedprice = ', extprice2
print 'USER 2 -- original quantity = ', quantity
print ' '

End Test

```

acid_isolation_test4_transaction1.tst

```

=====
stringconnect "dsn=tpch;"

execute {select now(*)} into times
print 'Isolation test 3 test start = ', times
print ' '

execute {select ordr, line, delta from
acid_isolation_table}
into ordr, line, delta

print 'User 1 -- The input data values for User 1
Acid Transaction.'
print 'User 1 -- o_key = ',ordr
print 'User 1 -- l_key = ',line
print 'User 1 -- deltal = ',delta

print ' '
execute {select now(*)} into times
print 'User 1 -- Starting the Acid Transaction: ',
times

execute {call acid_transaction( ^, ^, ^ )}
substitute ordr, line, delta
into rprice, quantity, tax, disc, extprice,
ototal

print ' '
execute {select now(*)} into times
print 'User 1 -- Acid Transaction complete: ', times
print '30 second timer started'
SYNCHRONIZE 2
sleep 30000

print ' '
execute {select now(*)} into times
print 'User 1 -- starting rollback: ', times

rollback
print ' '
execute {select now(*)} into times
print 'User 1 -- transaction rollback complete: ',
times

execute {select round(cast(^ as numeric(20,6)),2) }
substitute extprice into extprice2
print ' '
print 'USER 1 -- original extendedprice = ',
extprice2

```

```

print 'USER 1 -- original quantity = ', quantity
print ' '

disconnect
End Test

```

acid_isolation_test4_transaction2.tst

```

=====
stringconnect "dsn=tpch;"

execute {select ordr, line, delta from
acid_isolation_table}
into ordr, line, delta
% generate a new set of values; we only use delta2
execute { call generate_acid_values()} into ordr2,
line2, delta2

print ' '
print 'User 2 - The input data values for the Acid
Transaction.'
print 'User 2 -- o_key = ',ordr
print 'User 2 -- l_key= ',line
print 'User 2 -- delta2 = ',delta2

SYNCHRONIZE 2
sleep 5000

print ' '
execute {select now(*)} into times
print 'User 2 -- Starting the Acid Transaction: ',
times

execute {call acid_transaction( ^, ^, ^ ) }
substitute ordr, line, delta2
into rprice, quantity, tax, disc, extprice,
ototal
execute {select round(cast(^ as numeric(20,6)),2) }
substitute extprice into extprice2

sleep 5000
print ' '
execute {select now(*)} into times
print 'User 2 -- About to commit: ', times
commit

execute {select now(*)} into times
print 'User 2 -- transaction commit complete: ', times
print ' '
print 'USER 2 -- original extendedprice = ', extprice2
print 'USER 2 -- original quantity = ', quantity
print ' '

End Test

```

acid_isolation_test5_query.tst

```

=====
stringconnect "dsn=tpch;"

synchronize 2

execute { call generate_ps_values() } into ps_ptky,
ps_spky
print ' '
print 'user 2 ps_partkey = ', ps_ptky
print 'user 2 ps_suppkey = ', ps_spky
print ' '

execute {select now(*)} into times
print 'User 2 beginning query = ', times
execute {select * from partsupp where ps_partkey=^ and
ps_suppkey=^}
substitute ps_ptky, ps_spky
into ps_ptky, ps_spky, ps_aly, ps_spct, ps_ct

print ' '
print 'User2 gets all columns of the PARTSUPP table '
print ' for selected ps_partkey and ps_suppkey doing a
query.'
print ' '
print 'ps_partkey = ', ps_ptky, ' ps_suppkey = ',

```

```

ps_spky
print 'ps_availqty = ', ps_aly, '    ps_supplycost =
',ps_spct
print 'ps_comment = ', ps_ct
execute {select now(*)} into times
print 'User 2 query complete = ', times
print ' '

execute {select now(*)} into times
print 'User 2 about to commit = ', times
commit
execute {select now(*)} into times
print 'User 2 transaction commit complete = ', times

print ' '

End Test

```

acid_isolation_test5_transaction1.tst

```

=====
stringconnect "dsn=tpch;"

execute {select ordr, line, delta from
acid_isolation_table}
into ordr, line, delta

print ' '
print 'The following are the input values for the
users1 ACID Transaction.'
print 'o_key = ',ordr,'    l_key = ',line,'
delta = ',delta
print ' '
execute {select now(*)} into times
print 'User 1 isolation test time = ', times
print ' '
execute {select o_totalprice from orders where
o_orderkey=^ }
substitute ordr into o_tprice
execute {select l_extendedprice, l_quantity,l_partkey,
l_suppkey
from lineitem
where l_orderkey=^ and l_linenum=^}
substitute ordr, line
into l_price, l_quant, l_ptky, l_spky
print 'User 1 o_totalprice = ', o_tprice
print 'User 1 l_extendedprice = ', l_price,' l_quantity
= ', l_quant
print 'User 1 l_partkey = ', l_ptky,' l_suppkey
= ', l_spky
print ' '

execute {select now(*)} into times
print 'User 1 starting acid transaction = ', times

execute {call acid_transaction( ^, ^, ^, rprice,
quantity, tax, disc,
extprice, ototal) } substitute ordr, line,
delta

execute {select now(*)} into times
print 'User 1 waiting to commit = ', times
print ' '
synchronize 2
sleep 10000
execute {select now(*)} into times
print 'User 1 about to commit = ', times
commit
execute {select now(*)} into times
print 'User 1 transaction commit complete = ', times

execute {select o_totalprice from orders where
o_orderkey=^ }
substitute ordr into o_tprice
execute {select l_extendedprice, l_quantity
from lineitem where l_orderkey=^ and
l_linenum=^}
substitute ordr, line
into l_price, l_quant
print 'User 1 o_totalprice = ', o_tprice
print 'User 1 l_extendedprice = ', l_price,' l_quantity
= ', l_quant
print 'User 1 l_partkey = ', l_ptky,' l_suppkey

```

```

= ', l_spky

print ' '
execute {select * from history where h_o_key=^
and h_date_t=(select max(h_date_t) from history
where h_o_key=^)}
substitute ordr, ordr
into hpk, hsk, hok, hlk, hda, hdt

print 'User 1 history entry:'
print ' h_p_key = ', hpk
print ' h_s_key = ', hsk
print ' h_o_key = ', hok
print ' h_l_key = ', hlk
print ' h_delta = ', hda
print ' h_date_t = ', hdt

execute {select now(*)} into times
print 'User 1 isolation test time = ', times
print ' '

End Test

```

acid_isolation_test6_query.tst

```

=====
stringconnect "dsn=tpch;"

print 'User1 Query: '
print ' '
print 'User1 starts its query (Q1) here.'
execute {select now(*)} into qstart
print 'Start time for User1 Q1 =', qstart
print ' '
compare fetchall {select
l_returnflag,
l_linestatus,
sum(l_quantity) as sum_qty,
sum(l_extendedprice) as sum_base_price,
sum(l_extendedprice * (1 - l_discount)) as
sum_disc_price,
sum(l_extendedprice * (1 - l_discount) * (1 +
l_tax)) as sum_charge,
avg(l_quantity) as avg_qty,
avg(l_extendedprice) as avg_price,
avg(l_discount) as avg_disc,
count(*) as count_order
from lineitem
where l_shipdate <= dateadd(day, -1, '1998-12-01')}
group by l_returnflag,l_linestatus
order by l_returnflag,l_linestatus
} in 'queryresult'

execute {select now(*)} into qstop
print 'Stop time for User1 Q1 =', qstop
print ' '

End Test

```

acid_isolation_test6_transaction1.tst

```

=====
stringconnect "dsn=tpch;"

execute {select ordr, line, delta from
acid_isolation_table}
into ordr, line, delta

execute {select now(*)} into qstart2
print 'User2 acid Transaction = ', qstart2
print 'o_key = ',ordr,'    l_key = ',line,'
delta = ',delta
print ' '
execute {select o_totalprice from orders where
o_orderkey=^ }
substitute ordr into o_tprice
execute {select l_extendedprice, l_quantity,l_partkey,
l_suppkey
from lineitem where l_orderkey=^ and
l_linenum=^}
substitute ordr, line
into l_price, l_quant, l_ptky, l_spky

```

```

print 'User 2 o_totalprice = ', o_tprice
print 'User 2 l_extendedprice = ', l_price,
l_quantity = ', l_quant
print 'User 2 l_partkey      = ', l_ptky,
l_suppkey = ', l_spky
print ' '

execute {select now(*)} into qstart2
print 'Start Time for User2 Transaction = ', qstart2
print ' '
execute {call acid_transaction( ^, ^, ^, rprice,
quantity,
                                tax, disc, extprice,
ototal) }
        substitute ordr, line, delta

execute {select now(*)} into qstop2
print 'User 2 about to commit = ', qstop2
commit
execute {select now(*)} into qstop2
print 'User 2 transaction commit complete = ', qstop2
print ' '

execute {select o_totalprice from orders where
o_orderkey=^ }
        substitute ordr
        into o_tprice
execute {select l_extendedprice, l_quantity
from lineitem where l_orderkey=^ and
l_linenumber=^}
        substitute ordr, line
        into l_price, l_quant
print 'User 2 o_totalprice = ', o_tprice
print 'User 2 l_extendedprice = ', l_price,
l_quantity = ', l_quant
print 'User 2 l_partkey      = ', l_ptky,
l_suppkey = ', l_spky
print ' '

print ' '
execute {select * from history
where h_o_key=^
and h_date_t=(select max(h_date_t) from history
where h_o_key=^)}
        substitute ordr, ordr
        into hpk, hsk, hok, hlk, hda, hdt

print 'User 2 history entry:'
print ' h_p_key = ', hpk
print ' h_s_key = ', hsk
print ' h_o_key = ', hok
print ' h_l_key = ', hlk
print ' h_delta = ', hda
print ' h_date_t = ', hdt

print ' '
execute {select now(*)} into times
print 'User 2 completed = ', times

End Test

```

Disk Configuration Details

Solaris Volume Manager Setup

Note: The instructions below pertain to the controller and targets generated by the configuration used in the benchmark. Even for identically configured systems, the controller numbers and SCSI targets will rarely exactly match the numbers used here.

Perform the following steps to create the RAID devices:

```

1) create the following 15 MB slices
c0t0d0s7
c0t1d0s7
c0t2d0s7
c0t3d0s7

```

using the Solaris format command

2) create the SVM state replicas via

```

metadb -c 2 c0t0d0s7 c0t1d0s7 c0t2d0s7 \
c0t3d0s7

```

3) create 113 GB s3 slices on each of the following disks:

```

c2t0d0
c2t1d0
c2t2d0
c2t2d0

```

using the Solaris format command

4) create 1 RAID 5 device via

```

metainit d15 -r c2t0d0s3 c2t1d0s3 c2t2d0s3 c2t3d0s3

```

5) create the followin 1 GB slices:

```

c0t1d0s1
c0t2d0s4

```

using the Solaris format command

6) create the mirrored volume d1 via the following:

```

metainit d2 1 1 c0t1d0s6
metainit d3 1 1 c0t2d0s6 # s1 gets paired with s4
metainit d1 -m d2
metattach d1 d3

```

7) create 19 GB s1 slices on each of the following disks

```

c2t0d0
c2t1d0
c2t2d0
c2t2d0

```

File System Setup

create a filesystem on /dev/md/rdsk/d1

mount the filesystem on /sybase2

Database Device Links

Create the symbolic links for the mirrored # devices by running the following shellscript

```

cd /sybase2
ln -s /dev/md/rdsk/d15 M01

```

Create symbolic links for the temp devices # by running the following shellscript

```

cd /sybase2
ln -s /dev/rdsk/c0t0d0s1 T01
ln -s /dev/rdsk/c0t1d0s1 T02
ln -s /dev/rdsk/c0t2d0s1 T03
ln -s /dev/rdsk/c0t3d0s1 T04

```

Appendix C. Query Text and Query Output

qualification query 1

```
=====
% select
% l_returnflag,
% l_linestatus,
% sum(l_quantity) as sum_qty,
% sum(l_extendedprice) as sum_base_price,
% sum(l_extendedprice * (1 - l_discount)) as
sum_disc_price,
% sum(l_extendedprice * (1 - l_discount)) * (1 +
l_tax) as sum_charge,
% avg(l_quantity) as avg_qty,
% avg(l_extendedprice) as avg_price,
% avg(l_discount) as avg_disc,
% count(*) as count_order
% from
% lineitem
% where
% l_shipdate <= dateadd(day,-90,'1998-12-01')
% group by
% l_returnflag,
% l_linestatus
% order by
% l_returnflag,
% l_linestatus;
% Estimated 1 rows in query (I/O estimate 1010)
% PLAN> vt_1 (seq)
%
%
% 1 record(s) selected -- actual I/O 0
% select time including I/O 0.32000 seconds - current
time 16:40:13
'A', 'F', 37734107, 56586554400.7292032, 53758257134.86945
63, 55909065222.8284717, 25.5220058532573342, 38273.12973
46211374, .0499852958383577168, 1478493
'N', 'F', 991417, 1487504710.38000107, 1413082168.05409968
, 1469649223.19436967, 25.5164719205229819, 38284.4677608
483374, .0500934266742134809, 38854
'N', 'O', 74476040, 111701729697.737336, 106118230307.6073
83, 110367043872.495174, 25.5022267695849895, 38249.11798
8907361, .049996586053555131, 2920374
'R', 'F', 37719753, 56568041380.8983326, 53741292684.60453
75, 55889619119.8339581, 25.5057936126907617, 38250.85462
60985255, .0500094058300870121, 1478870
% total of 4 rows written
=====
```

qualification query 2

```
=====
% select top 100
% s_acctbal,
% s_name,
% n_name,
% p_partkey,
% p_mfgr,
% s_address,
% s_phone,
% s_comment
% from
% part,
% supplier,
% partsupp,
% nation,
% region
% where
% p_partkey = ps_partkey
% and s_suppkey = ps_suppkey
% and p_size = 15
% and p_type like 'BRASS'
% and s_nationkey = n_nationkey
% and n_regionkey = r_regionkey
% and r_name = 'EUROPE'
% and ps_supplycost = (
% select
% min(ps_supplycost)
% from
% partsupp,
```

```
% supplier,
% nation,
% region
% where
% p_partkey = ps_partkey
% and s_suppkey = ps_suppkey
% and s_nationkey = n_nationkey
% and n_regionkey = r_regionkey
% and r_name = 'EUROPE'
% )
% order by
% s_acctbal desc,
% n_name,
% s_name,
% p_partkey;
% Estimated 1 rows in query (I/O estimate 1010)
% PLAN> vt_1 (seq)
%
%
% 1 record(s) selected -- actual I/O 0
% select time including I/O 0.76000 seconds - current
time 16:40:25
9938.53, 'Supplier#000005359', 'UNITED KINGDOM
', 185358, 'Manufacturer#4
', 'QKuHYh, vZGiwu2FWEJoLDx04', '33-429-790-
6131', 'blithely silent pinto beans are furiously.
slyly final deposits across'
9937.84, 'Supplier#000005969', 'ROMANIA
', 108438, 'Manufacturer#1
', 'ANDENSOSmk, miq23Xfb5Rwt6dvUcvt6Qa', '29-520-692-
3537', 'carefully slow deposits use furiously. slyly
ironic platelets above the ironic'
9936.22, 'Supplier#000005250', 'UNITED KINGDOM
', 249, 'Manufacturer#4
', 'B3rqp0xbSEim4Mpy2RH
J', '33-320-228-2957', 'blithely special packages are.
stealthily express deposits across the closely final
instructi'
9923.77000000000119, 'Supplier#000002324
', 'GERMANY
', 29821, 'Manufacturer#4
', 'y30D9UyWStOK', '17-779-299-1839', 'quickly express
packages breach quiet pinto beans. requ'
9871.22, 'Supplier#000006373', 'GERMANY
', 43868, 'Manufacturer#5
', 'J8fcXWsTqM', '17-
813-485-8637', 'never silent deposits integrate
furiously blit'
9870.78, 'Supplier#000001286', 'GERMANY
', 81285, 'Manufacturer#2
', 'YKA, E2fjiVd7eUrzp2Ef8j1QxGo2DFnosATEH', '17-516-924-
4574', 'final theodolites cajole slyly special,'
9870.78, 'Supplier#000001286', 'GERMANY
', 181285, 'Manufacturer#4
', 'YKA, E2fjiVd7eUrzp2Ef8j1QxGo2DFnosATEH', '17-516-924-
4574', 'final theodolites cajole slyly special,'
9852.52000000000119, 'Supplier#000008973
', 'RUSSIA
', 18972, 'Manufacturer#2
', 't5L67YdBYH6o, Vz24jpdYQ9', '32-188-594-
7038', 'quickly regular instructions wake-- carefully
unusual braids into the expres'
9847.83, 'Supplier#000008097', 'RUSSIA
', 130557, 'Manufacturer#2
', 'xMe97bpE69NzdwLoX', '32-375-640-3593', 'slyly regular
dependencies sleep slyly furiously express dep'
9847.57, 'Supplier#000006345', 'FRANCE
', 86344, 'Manufacturer#1
', 'VSt3rzK3qG698u6ld8HhOByvrTcSTsvQlDQDag', '16-886-
766-7945', 'silent pinto beans should have to snooze
carefully along the final request'
% total of 100 rows written
=====
```

qualification query 3

```
=====
% select top 10
% l_orderkey,
% sum(l_extendedprice * (1 - l_discount)) as revenue,
% o_orderdate,
% o_shippriority
% from
% customer,
% orders,
% lineitem
% where
% c_mktsegment = 'BUILDING'
% and c_custkey = o_custkey
```

```

% and l_orderkey = o_orderkey
% and o_orderdate < '1995-03-15'
% and l_shipdate > '1995-03-15'
% group by
% l_orderkey,
% o_orderdate,
% o_shippriority
% order by
% revenue desc,
% o_orderdate;
% Estimated 1 rows in query (I/O estimate 1010)
% PLAN> vt_1 (seq)
%
%
% 1 record(s) selected -- actual I/O 0
% select time including I/O 0.36000 seconds - current
time 16:40:27
2456423,406181.011100000024,'1995-03-05',0
3459808,405838.698899999917,'1995-03-04',0
492164,390324.061,'1995-02-19',0
1188320,384537.935899999976,'1995-03-09',0
2435712,378673.055799999952,'1995-02-26',0
4878020,378376.795200000048,'1995-03-12',0
5521732,375153.9215,'1995-03-13',0
2628192,373133.309399999976,'1995-02-22',0
993600,371407.45949999994,'1995-03-05',0
2300070,367371.145200000107,'1995-03-13',0
% total of 10 rows written

```

qualification query 4

```

% select
% o_orderpriority,
% count(*) as order_count
% from
% orders
% where
% o_orderdate >= '1993-07-01'
% and o_orderdate < dateadd(month,3,'1993-07-01')
% and exists (
% select
% *
% from
% lineitem
% where
% l_orderkey = o_orderkey
% and l_commitdate < l_receiptdate
% )
% group by
% o_orderpriority
% order by
% o_orderpriority;
% Estimated 1 rows in query (I/O estimate 1010)
% PLAN> vt_1 (seq)
%
%
% 1 record(s) selected -- actual I/O 0
% select time including I/O 0.25000 seconds - current
time 16:40:31
'1-URGENT',10594
'2-HIGH',10476
'3-MEDIUM',10410
'4-NOT SPECIFIED',10556
'5-LOW',10487
% total of 5 rows written

```

qualification query 5

```

% select
% n_name,
% sum(l_extendedprice * (1 - l_discount)) as revenue
% from
% customer,
% orders,
% lineitem,
% supplier,
% nation,
% region
% where
% c_custkey = o_custkey

```

```

% and l_orderkey = o_orderkey
% and l_suppkey = s_suppkey
% and c_nationkey = s_nationkey
% and s_nationkey = n_nationkey
% and n_regionkey = r_regionkey
% and r_name = 'ASIA'
% and o_orderdate >= '1994-01-01'
% and o_orderdate < dateadd(year,1,'1994-01-01')
% group by
% n_name
% order by
% revenue desc;
% Estimated 1 rows in query (I/O estimate 1010)
% PLAN> vt_1 (seq)
%
%
% 1 record(s) selected -- actual I/O 0
% select time including I/O 0.65000 seconds - current
time 16:40:36
'INDONESIA',55502041.1696999431
'VIETNAM',55295086.9966999531
'CHINA',53724494.2565999746
'INDIA',52035512.000200057
'JAPAN',45410175.6954000235
% total of 5 rows written

```

qualification query 6

```

% select
% sum(l_extendedprice * l_discount) as revenue
% from
% lineitem
% where
% l_shipdate >= '1994-01-01'
% and l_shipdate < dateadd(year,1,'1994-01-01')
% and l_discount between .06 - 0.01 and .06 + 0.01
% and l_quantity < 24;
% Estimated 1 rows in query (I/O estimate 1010)
% PLAN> vt_1 (seq)
%
%
% 1 record(s) selected -- actual I/O 0
% select time including I/O 0.15000 seconds - current
time 16:40:41
123141078.228299007
% total of 1 rows written

```

qualification query 7

```

% select
% supp_nation,
% cust_nation,
% l_year,
% sum(volume) as revenue
% from
% (
% select
% n1.n_name as supp_nation,
% n2.n_name as cust_nation,
% datepart(year, l_shipdate) as l_year,
% l_extendedprice * (1 - l_discount) as volume
% from
% supplier,
% lineitem,
% orders,
% customer,
% nation n1,
% nation n2
% where
% s_suppkey = l_suppkey
% and o_orderkey = l_orderkey
% and c_custkey = o_custkey
% and s_nationkey = n1.n_nationkey
% and c_nationkey = n2.n_nationkey
% and (
% (n1.n_name = 'FRANCE' and n2.n_name = 'GERMANY')
% or (n1.n_name = 'GERMANY' and n2.n_name = 'FRANCE')
% )
% and l_shipdate between '1995-01-01' and '1996-12-31'
% ) as shipping

```



```

% group by
% supp_nation,
% cust_nation,
% l_year
% order by
% supp_nation,
% cust_nation,
% l_year;
% Estimated 1 rows in query (I/O estimate 1010)
% PLAN> vt_1 (seq)
%
%
% 1 record(s) selected -- actual I/O 0
% select time including I/O 0.67000 seconds - current
time 16:40:43
'FRANCE', 'GERMANY',
',1995,54639732.7335999489
'FRANCE', 'GERMANY',
',1996,54633083.3075999737
'GERMANY', 'FRANCE',
',1995,52531746.6696999669
'GERMANY', 'FRANCE',
',1996,52520549.0223998487
% total of 4 rows written

```

qualification query 8

```

% select
% o_year,
% sum(case
% when nation = 'BRAZIL' then volume
% else 0
% end) / sum(volume) as mkt_share
% from
% (
% select
% datepart(year, o_orderdate) as o_year,
% l_extendedprice * (1 - l_discount) as volume,
% n2.n_name as nation
% from
% part,
% supplier,
% lineitem,
% orders,
% customer,
% nation n1,
% nation n2,
% region
% where
% p_partkey = l_partkey
% and s_suppkey = l_suppkey
% and l_orderkey = o_orderkey
% and o_custkey = c_custkey
% and c_nationkey = n1.n_nationkey
% and n1.n_regionkey = r_regionkey
% and r_name = 'AMERICA'
% and s_nationkey = n2.n_nationkey
% and o_orderdate between '1995-01-01' and '1996-12-
31'
% and p_type = 'ECONOMY ANODIZED STEEL'
% ) as all_nations
% group by
% o_year
% order by
% o_year;
% Estimated 1 rows in query (I/O estimate 1010)
% PLAN> vt_1 (seq)
%
%
% 1 record(s) selected -- actual I/O 0
% select time including I/O 0.86000 seconds - current
time 16:40:47
1995,.0344358904066548347
1996,.041485521293530345
% total of 2 rows written

```

qualification query 9

```

% select
% nation,

```

```

% o_year,
% sum(amount) as sum_profit
% from
% (
% select
% n_name as nation,
% datepart(year, o_orderdate) as o_year,
% l_extendedprice * (1 - l_discount) - ps_supplycost *
l_quantity as
% amount
% from
% part,
% supplier,
% lineitem,
% partsupp,
% orders,
% nation
% where
% s_suppkey = l_suppkey
% and ps_suppkey = l_suppkey
% and ps_partkey = l_partkey
% and p_partkey = l_partkey
% and o_orderkey = l_orderkey
% and s_nationkey = n_nationkey
% and p_name like 'green'
% ) as profit
% group by
% nation,
% o_year
% order by
% nation,
% o_year desc;
% Estimated 1 rows in query (I/O estimate 1010)
% PLAN> vt_1 (seq)
%
%
% 1 record(s) selected -- actual I/O 0
% select time including I/O 0.69000 seconds - current
time 16:40:48
'ALGERIA', '1998,31342867.2345000029
'ALGERIA', '1997,57138193.0233001232
'ALGERIA', '1996,56140140.1330001235
'ALGERIA', '1995,53051469.6533999741
'ALGERIA', '1994,53867582.128600049
'ALGERIA', '1993,54942718.132400012
'ALGERIA', '1992,54628034.7126999021
'ARGENTINA', '1998,30211185.708099997
'ARGENTINA', '1997,50805741.75230003
'ARGENTINA', '1996,51923746.5754999459
% total of 175 rows written

```

qualification query 10

```

% select top 20
% c_custkey,% c_name,
% sum(l_extendedprice * (1 - l_discount)) as revenue,
% c_acctbal,
% n_name,
% c_address,
% c_phone,
% c_comment
% from
% customer,
% orders,
% lineitem,
% nation
% where
% c_custkey = o_custkey
% and l_orderkey = o_orderkey
% and o_orderdate >= '1993-10-01'
% and o_orderdate < dateadd(month,3,'1993-10-01')
% and l_returnflag = 'R'
% and c_nationkey = n_nationkey
% group by
% c_custkey,
% c_name,
% c_acctbal,
% c_phone,
% n_name,
% c_address,
% c_comment
% order by
% revenue desc;

```

```

% Estimated 1 rows in query (I/O estimate 1010)
% PLAN> vt_1 (seq)
%
%
% 1 record(s) selected -- actual I/O 0
% select time including I/O 0.50000 seconds - current
time 16:40:55
57040,'Customer#000057040',734235.2455,632.87,'JAPAN
','Eioyzjf4pp','22-895-641-3466','requests sleep
blithely about the furiously i'
143347,'Customer#000143347',721002.694799999952,2557.4
700000000003,'EGYPT
','laReFYv,Kw4','14-742-935-3718','fluffily bold
excuses haggle finally after the u'
60838,'Customer#000060838',679127.307700000048,2454.77
,'BRAZIL
','64EaJ5vMAHWJlBOxJklpNc2RjiWE','12-913-494-
9813','furiously even pinto beans integrate under the
ruthless foxes; ironic, even dolphins across the slyl'
101998,'Customer#000101998',637029.566699999809,3790.8
9,'UNITED KINGDOM
','01c9CILnNtfOQYmZj','33-
593-865-6378','accounts doze blithely! enticing, final
deposits sleep blithely special accounts. slyly
express accounts pla'
125341,'Customer#000125341',633508.086,4983.5100000000
006,'GERMANY
','S29ODD6bceU8QsUuEJznkNaK','17-582-695-
5962','quickly express requests wake quickly blithely'
25501,'Customer#000025501',620269.784899999976,7725.04
,'ETHIOPIA
','W556MXuoiaYCCZamJI,Rn0B4ACUGdkQ8DZ','15-874-808-
6793','quickly special requests sleep evenly among the
special deposits. special deposi'
115831,'Customer#000115831',596423.867200000167,5098.1
,'FRANCE
','rFeBbEEyk dl
ne7zV5fDrmiqlK09wV7pxqCgIc','16-715-386-
3788','carefully bold excuses sleep alongside of the
thinly idle'
84223,'Customer#000084223',594998.023899999976,528.65,
'UNITED KINGDOM
','nAVZCs6BaWap rrM27N
2qBnzc5WBauxbA','33-442-824-8191','pending, final
ideas haggle final requests. unusual, regular
asymptotes affix according to the even foxes.'
54289,'Customer#000054289',585603.391799999952,5583.02
,'IRAN
','vXCxoCsU0Bad5JQI ,
oobkZ','20-834-292-4707','express requests sublute
blithely regular requests. regular, even ideas solve.'
39922,'Customer#000039922',584878.113399999976,7321.10
999999999881,'GERMANY
','Zgy4s50l2GKN4pLDpBU8m342gIw6R','17-147-757-
8036','even pinto beans haggle. slyly bold accounts
inte'
6226,'Customer#00006226',576783.760599999905,2230.09,
'UNITED KINGDOM
','8gPu8,NPGkfyQQ0hcIYUGPIBwc,ybP5g','33-657-701-
3391','quickly final requests against the regular
instructions wake blithely final instructions. pa'
922,'Customer#00000922',576767.533299999833,3869.25,'
GERMANY
','Az9RFaut7NkPnc5zSD2PwHgVvr4jRzq','17-945-916-
9648','boldly final requests cajole blith'
147946,'Customer#000147946',576455.132,2030.1300000000
003,'ALGERIA
','iANyZHjghyy7Ajah0pTrYyhJ','10-886-956-
3143','furiously even accounts are blithely above the
furiously'
115640,'Customer#000115640',569341.193299999952,6436.1
,'ARGENTINA
','Vtgfia9qI
7EpHgecU1X','11-411-543-4901','final instructions are
slyly according to the'
73606,'Customer#000073606',568656.857799999952,1785.67
,'JAPAN
','xuR0Tro5yChDfOCrjkd2ol','22-437-653-
6966','furiously bold orbits about the furiously busy
requests wake across the furiously quiet theodolites.
d'
110246,'Customer#000110246',566842.981499999881,7763.3
5,'VIETNAM
','7KzflgX MDOq7sOkI','31-
943-426-9837','dolphins sleep blithely among the slyly
final'
142549,'Customer#000142549',563537.236799999952,5085.9
899999999994,'INDONESIA
','ChqEoK43OysjdHbtKCP6dKqjNyvvi9','19-955-562-
2398','regular, unusual dependencies boost slyly;
ironic attainments nag fluffily into the unusual
packages?'

```

```

146149,'Customer#000146149',557254.9865,1791.55,'ROMAN
IA
','s87fvzFQpU','29-744-164-
6487','silent, unusual requests detect quickly slyly
regul'
52528,'Customer#000052528',556397.350899999976,551.79,
'ARGENTINA
','NFztyTOR10UOJ','11-208-
192-3205','unusual requests detect. slyly dogged
theodolites use slyly. deposit'
23431,'Customer#000023431',554269.536000000119,3381.86
,'ROMANIA
','HgiV0phqhaIa9aydNoIlb','29-915-458-
2654','instructions nag quickly. furiously bold
accounts cajol'
% total of 20 rows written

```

qualification query 11

```

% select
% ps_partkey,
% sum(ps_supplycost * ps_availqty) as value
% from
% partsupp,
% supplier,
% nation
% where
% ps_suppkey = s_suppkey
% and s_nationkey = n_nationkey
% and n_name = 'GERMANY'
% group by
% ps_partkey having
% sum(ps_supplycost * ps_availqty) > (
% select
% sum(ps_supplycost * ps_availqty) * 0.0001000000
% from
% partsupp,
% supplier,
% nation
% where
% ps_suppkey = s_suppkey
% and s_nationkey = n_nationkey
% and n_name = 'GERMANY'
% )
% order by
% value desc;
% Estimated 1 rows in query (I/O estimate 1010)
% PLAN> vt_1 (seq)
%
%
% 1 record(s) selected -- actual I/O 0
% select time including I/O 0.49000 seconds - current
time 16:41:01
129760,17538456.8599999994
166726,16503353.9199999988
191287,16474801.9699999988
161758,16101755.5399999976
34452,15983844.7200000018
139035,15907078.3400000006
9403,15451755.6199999988
154358,15212937.8799999982
38823,15064802.8599999994
85606,15053957.150000003
% total of 1048 rows written

```

qualification query 12

```

% select
% l_shipmode,
% sum(case
% when o_orderpriority = '1-URGENT'
% or o_orderpriority = '2-HIGH'
% then 1
% else 0
% end) as high_line_count,
% sum(case
% when o_orderpriority <> '1-URGENT'
% and o_orderpriority <> '2-HIGH'
% then 1
% else 0
% end) as low_line_count
% from

```

```

% orders,
% lineitem
% where
% o_orderkey = l_orderkey
% and l_shipmode in ('MAIL', 'SHIP')
% and l_commitdate < l_receiptdate
% and l_shipdate < l_commitdate
% and l_receiptdate >= '1994-01-01'
% and l_receiptdate < dateadd(year,1,'1994-01-01')
% group by
% l_shipmode
% order by
% l_shipmode;
% Estimated 1 rows in query (I/O estimate 1010)
% PLAN> vt_1 (seq)
%
%
% 1 record(s) selected -- actual I/O 0
% select time including I/O 0.26000 seconds - current
time 16:41:03
'MAIL      ',6202,9324
'SHIP      ',6200,9262
% total of 2 rows written

```

qualification query 13

```

% select
% c_count,
% count(*) as custdist
% from
% (
% select
% c_custkey,
% count(o_orderkey)
% from
% customer left outer join orders on
% c_custkey = o_custkey
% and o_comment not like 'specialrequests'
% group by
% c_custkey
% ) as c_orders (c_custkey, c_count)
% group by
% c_count
% order by
% custdist desc,
% c_count desc;
% Estimated 1 rows in query (I/O estimate 1010)
% PLAN> vt_1 (seq)
%
%
% 1 record(s) selected -- actual I/O 0
% select time including I/O 0.17000 seconds - current
time 16:41:06
0,50004
9,6641
10,6566
11,6058
8,5949
12,5553
13,4989
19,4748
7,4707
18,4625
% total of 42 rows written

```

qualification query 14

```

% select
% 100.00 * sum(case
% when p_type like 'PROMO'
% then l_extendedprice * (1 - l_discount)
% else 0
% end) / sum(l_extendedprice * (1 - l_discount)) as
promo_revenue
% from
% lineitem,
% part
% where
% l_partkey = p_partkey
% and l_shipdate >= '1995-09-01'

```

```

% and l_shipdate < dateadd(month,1,'1995-09-01');
% Estimated 1 rows in query (I/O estimate 1010)
% PLAN> vt_1 (seq)
%
%
% 1 record(s) selected -- actual I/O 0
% select time including I/O 0.24000 seconds - current
time 16:41:19
16.3807786263955563
% total of 1 rows written

```

qualification query 15

```

Executing command:
% create view revenue0 (supplier_no, total_revenue) as
% select
% l_suppkey,
% sum(l_extendedprice * (1 - l_discount))
% from
% lineitem
% where
% l_shipdate >= '1996-01-01'
% and l_shipdate < dateadd(month,3,'1996-01-01')
% group by
% l_suppkey;
% execution time 0.81000 seconds - current time
16:41:21

```

```

Executing command:
% select
% s_suppkey,
% s_name,
% s_address,
% s_phone,
% total_revenue
% from
% supplier,
% revenue0
% where
% s_suppkey = supplier_no
% and total_revenue = (
% select
% max(total_revenue)
% from
% revenue0
% )
% order by
% s_suppkey;
% Estimated 1 rows in query (I/O estimate 1010)
% PLAN> vt_1 (seq)
%
%
% 1 record(s) selected -- actual I/O 0
% select time including I/O 0.27000 seconds - current
time 16:41:21
8449,'Supplier#000008449
', 'Wp34zim9qYFbVctdW', '20-469-856-
8873',1772627.20870000005
% total of 1 rows written

```

qualification query 16

```

% select
% p_brand,
% p_type,
% p_size,
% count(distinct ps_suppkey) as supplier_cnt
% from
% partsupp,
% part
% where
% p_partkey = ps_partkey
% and p_brand <> 'Brand#45'
% and p_type not like 'MEDIUM POLISHED'
% and p_size in (49, 14, 23, 45, 19, 3, 36, 9)
% and ps_suppkey not in (
% select
% s_suppkey
% from

```

```

% supplier
% where
% s_comment like 'CustomerComplaints'
% )
% group by
% p_brand,
% p_type,
% p_size
% order by
% supplier_cnt desc,
% p_brand,
% p_type,
% p_size;
% Estimated 1 rows in query (I/O estimate 1010)
% PLAN> vt_1 (seq)
%
%
% 1 record(s) selected -- actual I/O 0
% select time including I/O 0.27000 seconds - current
time 16:41:22
'Brand#41 ', 'MEDIUM BRUSHED TIN', 3, 28
'Brand#54 ', 'STANDARD BRUSHED COPPER', 14, 27
'Brand#11 ', 'STANDARD BRUSHED TIN', 23, 24
'Brand#11 ', 'STANDARD BURNISHED BRASS', 36, 24
'Brand#15 ', 'MEDIUM ANODIZED NICKEL', 3, 24
'Brand#15 ', 'SMALL ANODIZED BRASS', 45, 24
'Brand#15 ', 'SMALL BURNISHED NICKEL', 19, 24
'Brand#21 ', 'MEDIUM ANODIZED COPPER', 3, 24
'Brand#22 ', 'SMALL BRUSHED NICKEL', 3, 24
'Brand#22 ', 'SMALL BURNISHED BRASS', 19, 24

```

% total of 18314 rows written

qualification query 17

```

% select
% sum(l_extendedprice) / 7.0 as avg_yearly
% from
% lineitem,
% part
% where
% p_partkey = l_partkey
% and p_brand = 'Brand#23'
% and p_container = 'MED BOX'
% and l_quantity < (
% select
% 0.2 * avg(l_quantity)
% from
% lineitem
% where
% l_partkey = p_partkey
% );
% Estimated 1 rows in query (I/O estimate 1010)
% PLAN> vt_1 (seq)
%
%
% 1 record(s) selected -- actual I/O 0
% select time including I/O 0.22000 seconds - current
time 16:41:28
348406.054285713732
% total of 1 rows written

```

qualification query 18

```

% select top 100
% c_name,
% c_custkey,
% o_orderkey,
% o_orderdate,
% o_totalprice,
% sum(l_quantity)
% from
% customer,
% orders,
% lineitem
% where
% o_orderkey in (
% select
% l_orderkey
% from

```

```

% lineitem
% group by
% l_orderkey having
% sum(l_quantity) > 300
% )
% and c_custkey = o_custkey
% and o_orderkey = l_orderkey
% group by
% c_name,
% c_custkey,
% o_orderkey,
% o_orderdate,
% o_totalprice
% order by
% o_totalprice desc,
% o_orderdate;
% Estimated 1 rows in query (I/O estimate 1010)
% PLAN> vt_1 (seq)
%
%
% 1 record(s) selected -- actual I/O 0
% select time including I/O 0.34000 seconds - current
time 16:41:29
'Customer#000128120', 128120, 4722021, '1994-04-
07', 544089.089999999881, 323
'Customer#000144617', 144617, 3043270, '1997-02-
12', 530604.439999999994, 317
'Customer#000013940', 13940, 2232932, '1997-04-
13', 522720.61, 304
'Customer#000066790', 66790, 2199712, '1996-09-
30', 515531.82, 327
'Customer#000046435', 46435, 4745607, '1997-07-
03', 508047.99, 309
'Customer#000015272', 15272, 3883783, '1993-07-
28', 500241.33, 302
'Customer#000146608', 146608, 3342468, '1994-06-
12', 499794.58, 303
'Customer#000096103', 96103, 5984582, '1992-03-
16', 494398.789999999994, 312
'Customer#000024341', 24341, 1474818, '1992-11-
15', 491348.26, 302
'Customer#000137446', 137446, 5489475, '1997-05-
23', 487763.25, 311
% total of 57 rows written

```

qualification query 19

```

% select
% sum(l_extendedprice* (1 - l_discount)) as revenue
% from
% lineitem,
% part
% where
% (
% p_partkey = l_partkey
% and p_brand = 'Brand#12'
% and p_container in ('SM CASE', 'SM BOX', 'SM PACK',
'SM PKG')
% and l_quantity >= 1 and l_quantity <= 1 + 10
% and p_size between 1 and 5
% and l_shipmode in ('AIR', 'AIR REG')
% and l_shipinstruct = 'DELIVER IN PERSON'
% )
% or
% (
% p_partkey = l_partkey
% and p_brand = 'Brand#23'
% and p_container in ('MED BAG', 'MED BOX', 'MED PKG',
'MED PACK')
% and l_quantity >= 10 and l_quantity <= 10 + 10
% and p_size between 1 and 10
% and l_shipmode in ('AIR', 'AIR REG')
% and l_shipinstruct = 'DELIVER IN PERSON'
% )
% or
% (
% p_partkey = l_partkey
% and p_brand = 'Brand#34'
% and p_container in ('LG CASE', 'LG BOX', 'LG PACK',
'LG PKG')
% and l_quantity >= 20 and l_quantity <= 20 + 10
% and p_size between 1 and 15
% and l_shipmode in ('AIR', 'AIR REG')

```

```

% and l_shipinstruct = 'DELIVER IN PERSON'
% );
% Estimated 1 rows in query (I/O estimate 1010)
% PLAN> vt_1 (seq)
%
%
% 1 record(s) selected -- actual I/O 0
% select time including I/O 0.35000 seconds - current
time 16:41:46
3083843.05780000031
% total of 1 rows written

```

qualification query 20

```

% select
% s_name,
% s_address
% from
% supplier,
% nation
% where
% s_suppkey in (
% select
% ps_suppkey
% from
% partsupp
% where
% ps_partkey in (
% select
% p_partkey
% from
% part
% where
% p_name like 'forest'
% )
% and ps_availqty > (
% select
% 0.5 * sum(l_quantity)
% from
% lineitem
% where
% l_partkey = ps_partkey
% and l_suppkey = ps_suppkey
% and l_shipdate >= '1994-01-01'
% and l_shipdate < dateadd(year,1,'1994-01-01')
% )
% )
% and s_nationkey = n_nationkey
% and n_name = 'CANADA'
% order by
% s_name;
% Estimated 1 rows in query (I/O estimate 1010)
% PLAN> vt_1 (seq)
%
%
% 1 record(s) selected -- actual I/O 0
% select time including I/O 0.37000 seconds - current
time 16:41:51
'Supplier#000000020
', 'iybAE,RmTymrZVYaFZva2SH,j'
'Supplier#000000091
', 'YV45D7TkfdQanOOZ7q9QxkyGUapU1oOWU6q3'
'Supplier#000000197
', 'YC2Acon6kjY3zj3Fbxs2k4Vdf7X0cd2F'
'Supplier#000000226
', '83qOdU2EYRdPQAQhEtn
GRZEEd'
'Supplier#000000285
', 'Br7eInntlyxrw6ImgpJ7YdhFDjuBF'
'Supplier#000000378
', 'FfbhyCxWvcPrO8ltp9'
'Supplier#000000402
', 'i9Sw4DoyMhzhKXCH9By,AYSgmd'
'Supplier#000000530
', '0qwCMwobKY
OcmLyfRXlagA8ukENJv,'
'Supplier#000000688
', 'D
fw5ocppmZpYBBIPI718hCihLDZ5KhKX'
'Supplier#000000710
', 'f19YPvOyb
QoYwjKC,oPycpGfieBAcwKJo'
% total of 204 rows written

```

qualification query 21

```

% select top 100
% s_name,
% count(*) as numwait
% from
% supplier,
% lineitem l1,
% orders,
% nation
% where
% s_suppkey = l1.l_suppkey
% and o_orderkey = l1.l_orderkey
% and o_orderstatus = 'F'
% and l1.l_receiptdate > l1.l_commitdate
% and exists (
% select
% *
% from
% lineitem l2
% where
% l2.l_orderkey = l1.l_orderkey
% and l2.l_suppkey <> l1.l_suppkey
% )
% and not exists (
% select
% *
% from
% lineitem l3
% where
% l3.l_orderkey = l1.l_orderkey
% and l3.l_suppkey <> l1.l_suppkey
% and l3.l_receiptdate > l3.l_commitdate
% )
% and s_nationkey = n_nationkey
% and n_name = 'SAUDI ARABIA'
% group by
% s_name
% order by
% numwait desc,
% s_name;
% Estimated 1 rows in query (I/O estimate 1010)
% PLAN> vt_1 (seq)
%
%
% 1 record(s) selected -- actual I/O 0
% select time including I/O 0.54000 seconds - current
time 16:41:53
'Supplier#000002829
',,20
'Supplier#000005808
',,18
'Supplier#000000262
',,17
'Supplier#000000496
',,17
'Supplier#000002160
',,17
'Supplier#000002301
',,17
'Supplier#000002540
',,17
'Supplier#000003063
',,17
'Supplier#000005178
',,17
'Supplier#000008331
',,17
% total of 100 rows written

```

qualification query 22

```

% select
% c_ntrycode,
% count(*) as numcust,
% sum(c_acctbal) as totacctbal
% from
% (
% select
% substring(c_phone,1,2) as c_ntrycode,
% c_acctbal
% from
% customer
% where
% substring(c_phone,1,2) in
% ('13', '31', '23', '29', '30', '18', '17')
% and c_acctbal > (
% select
% avg(c_acctbal)
% from
% customer
% where
% c_acctbal > 0.00
% and substring(c_phone,1,2) in

```

```

% ('13', '31', '23', '29', '30', '18', '17')
% )
% and not exists (
% select
% *
% from
% orders
% where
% o_custkey = c_custkey
% )
% ) as custsale
% group by
% centrycode
% order by
% centrycode;
% Estimated 1 rows in query (I/O estimate 1010)
% PLAN> vt_1 (seq)
%
%
% 1 record(s) selected -- actual I/O 0
% select time including I/O 0.18000 seconds - current
time 16:42:07
'13',888,6737713.98999999881
'17',861,6460573.72
'18',964,7236687.40000001431
'23',892,6701457.95000000954
'29',948,7158866.62999999642
'30',909,6808436.13000000119
'31',922,6806670.17999998569
% total of 7 rows written
Appendix D. Seed and Query Substitution Parameters

```

This Appendix contains Seed values and substitution parameters for each stream

Seed Values

```

stream0 125022810
stream1 125022811
stream2 125022812
stream3 125022813
stream4 125022814
stream5 125022815
stream6 125022816
stream7 125022817

```

Query Parameters

stream0: 125022810

```

14 1996-06-01
2 1 NICKEL EUROPE
9 medium
20 mint 1993-01-01 MOROCCO
6 1994-01-01 0.07 24
17 Brand#45 LG CASE
18 315
8 IRAQ MIDDLE EAST LARGE BURNISHED NICKEL
21 ARGENTINA
13 unusual accounts
3 FURNITURE 1995-03-24
22 15 21 29 11 34 20 10
16 Brand#14 PROMO PLATED 11 9 3
30 10 42 21 29
4 1996-10-01
11 JORDAN 0.0000001000
15 1995-09-01
1 96
10 1993-11-01
19 Brand#23 Brand#14 Brand#34 5
10 20
5 EUROPE 1994-01-01
7 MOROCCO IRAQ
12 MAIL TRUCK 1996-01-01

```

stream1: 125022811

```

21 CHINA
3 MACHINERY 1995-03-10
18 313
5 MIDDLE EAST 1995-01-01
11 ARGENTINA 0.0000001000
7 GERMANY CANADA
6 1995-01-01 0.04 24
20 yellow 1996-01-01 ETHIOPIA
17 Brand#42 LG JAR
12 TRUCK MAIL 1996-01-01
16 Brand#44 SMALL BRUSHED 47 16 37
21 6 32 22 41
15 1993-05-01
13 unusual accounts
10 1994-08-01
2 39 COPPER AMERICA
8 CANADA AMERICA MEDIUM BRUSHED NICKEL
14 1996-09-01
19 Brand#25 Brand#42 Brand#24 10
11 27
9 lemon
22 23 10 25 28 34 18 29
1 104
4 1994-07-01

```

stream2: 125022812

```

6 1995-01-01 0.09 25
17 Brand#44 LG CAN
14 1996-12-01
16 Brand#34 ECONOMY ANODIZED 37 21
2 40 16 8 26 12
19 Brand#23 Brand#34 Brand#23 6
12 23
10 1993-05-01
9 indian
2 27 STEEL MIDDLE EAST
15 1995-12-01
8 SAUDI ARABIA MIDDLE EAST MEDIUM PLATED
NICKEL
5 AFRICA 1995-01-01
22 29 17 21 14 15 32 13
12 RAIL MAIL 1996-01-01
7 UNITED STATES SAUDI ARABIA
13 unusual deposits
18 314
1 112
4 1997-02-01
20 indian 1995-01-01 ROMANIA
3 FURNITURE 1995-03-27
11 KENYA 0.0000001000
21 IRAN

```

stream3: 125022813

```

8 JAPAN ASIA MEDIUM ANODIZED BRASS
5 AMERICA 1995-01-01
4 1994-11-01
6 1995-01-01 0.07 25
17 Brand#41 MED CASE
7 MOZAMBIQUE JAPAN
1 120
18 312
22 20 31 15 24 14 29 23
14 1997-03-01
9 ghost
10 1994-02-01
15 1993-09-01
11 BRAZIL 0.0000001000
20 sandy 1993-01-01 INDONESIA
2 15 BRASS AMERICA
21 BRAZIL
19 Brand#35 Brand#12 Brand#22 1
13 13 30
13 unusual deposits
16 Brand#14 STANDARD PLATED 24 14
8 37 28 39 42 18
12 REG AIR MAIL 1997-01-01
3 MACHINERY 1995-03-12

```

stream4: 125022814

5 ASIA 1995-01-01
21 ROMANIA
14 1997-06-01
19 Brand#32 Brand#45 Brand#11 6
15 1996-04-01
17 Brand#43 MED JAR
12 SHIP MAIL 1997-01-01
6 1995-01-01 0.04 24
4 1997-06-01
9 drab
8 EGYPT MIDDLE EAST SMALL POLISHED BRASS
16 Brand#44 MEDIUM POLISHED 27 12
40 11 9 31 17 21
11 MOROCCO 0.0000001000
2 2 NICKEL MIDDLE EAST
10 1994-12-01
18 313
1 67
13 unusual deposits
7 INDIA EGYPT
22 34 17 11 23 27 24 16
3 BUILDING 1995-03-29
20 deep 1996-01-01 UNITED STATES

stream5: 125022815

21 IRAQ
15 1993-12-01
4 1995-03-01
6 1996-01-01 0.02 25
7 ALGERIA VIETNAM
16 Brand#34 PROMO ANODIZED 5 33 24
15 7 10 18 32
19 Brand#34 Brand#33 Brand#11 1
15 23
18 315
14 1997-10-01
22 11 12 13 28 16 17 26
11 CANADA 0.0000001000
13 unusual deposits
3 MACHINERY 1995-03-14
1 75
2 40 TIN ASIA
5 EUROPE 1996-01-01
8 VIETNAM ASIA SMALL BURNISHED BRASS
20 pale 1995-01-01 KENYA
12 FOB SHIP 1993-01-01
17 Brand#45 MED CAN
10 1993-09-01
9 cream

stream6: 125022816

10 1994-06-01
3 BUILDING 1995-03-31
15 1996-07-01
13 express deposits
6 1996-01-01 0.07 25
8 JORDAN MIDDLE EAST STANDARD BRUSHED BRASS
9 chartreuse
7 PERU JORDAN
4 1997-10-01
11 MOZAMBIQUE 0.0000001000
22 11 14 20 25 18 34 23
18 312
12 MAIL FOB 1997-01-01
1 83
5 MIDDLE EAST 1996-01-01
16 Brand#14 SMALL BURNISHED 31 28
18 34 4 13 1 30
2 28 STEEL MIDDLE EAST
14 1998-01-01
19 Brand#41 Brand#11 Brand#15 7
16 30
20 blanched 1993-01-01 CANADA
17 Brand#42 JUMBO CASE
21 EGYPT

stream7: 125022817

18 314
8 ETHIOPIA AFRICA STANDARD PLATED BRASS
20 lime 1997-01-01 CHINA
21 VIETNAM
2 16 BRASS ASIA
4 1995-07-01
22 28 21 15 29 17 14 24
17 Brand#44 JUMBO JAR
1 91
11 EGYPT 0.0000001000
9 blanched
19 Brand#43 Brand#54 Brand#54 2
17 26
3 HOUSEHOLD 1995-03-16
13 express packages
5 AFRICA 1996-01-01
7 INDONESIA ETHIOPIA
10 1993-03-01
16 Brand#44 LARGE POLISHED 35 25 43
48 19 36 8 46
6 1996-01-01 0.05 24
14 1993-04-01
15 1994-04-01
12 TRUCK FOB 1993-01-01

Appendix E. Implementation-Specific Layer/Driver Code

=====

newtest

```
=====
#!/bin/bash

scope=all
sf=300
mpssheap=4m
mpssstack=64k
nrfs=6

big=

asiq_running=`ps -eaf | grep asiq | grep -v grep | wc
-l`
if ((asiq_running > 0))
then
    dbstop -c "DSN=tpch" -y
fi

start_asiq @utility.cfg
dbisqlc -c "DSN=utility_db" -q create_database.sql
dbstop -c "DSN=utility_db" -y
start_asiq @tpch.cfg /sybase2/tpch.db
dbisqlc -c "DSN=tpch" -q create_dbspaces.sql
dbisqlc -c "DSN=tpch" -q tpch_rf_int.sql
dbisqlc -c "DSN=tpch" -q tpch_wait.sql
dbisqlc -c "DSN=tpch" -q options.sql >o.000
dbstop -c "DSN=tpch" -y
my_start_asiq $mpssheap $mpssstack @tpch.cfg /
sybase2/tpch.db

dbisqlc -c "DSN=tpch" -q create_tables_${big}int.sql
dbisqlc -c "DSN=tpch" -q load_lineitem.sql &
loadlpid=$!
dbisqlc -c "DSN=tpch" -q load_region.sql
dbisqlc -c "DSN=tpch" -q load_nation.sql
dbisqlc -c "DSN=tpch" -q load_customer.sql
dbisqlc -c "DSN=tpch" -q load_part.sql
dbisqlc -c "DSN=tpch" -q load_supplier.sql
dbisqlc -c "DSN=tpch" -q load_partsupp.sql
dbisqlc -c "DSN=tpch" -q load_orders.sql
loadopid=$!
wait $loadopid
wait $loadlpid
seed=`date +%m%d%H%M%S`
gen_streams_new.ksh $seed $sf $nrfs

dbisqlc -c "DSN=tpch" -q dbtables-syb.sql >
rdbtablest_start.out
dbisqlc -c "DSN=tpch" -q dew_cat1.sql >
dew_cat1_start.out
dbisqlc -c "DSN=tpch" -q dew_cat2.sql >
dew_cat2_start.out
dbisqlc -c "DSN=tpch" -q dew_cat3.sql >
dew_cat3_start.out

dbisqlc -q -c "DSN=tpch" check_options.sql >
check_options_start.out

touch /export/home/sybase/run/scripts/rf1.lock
touch /export/home/sybase/run/scripts/rf2.lock

dbisqlc -c "DSN=tpch" -q update_power.sql >
update_power.out &
rfspid=$!

while [ -f /export/home/sybase/run/scripts/rf1.lock ]
do
    sleep 10
done

dbisqlc -c "DSN=tpch" -q stream0.sql > stream0.out
rm -f /export/home/sybase/run/scripts/rf2.lock
wait $rfspid
```

```
((i=1))
while ((i<=nrfs))
do
    dbisqlc -c "DSN=tpch" -q stream${i}.sql > stream$
{i}.out &
    ((i=i+1))
done

dbisqlc -c "DSN=tpch" -q update_throughput${nrfs}.sql
> update_throughput.out &
rf0pid=$!
wait $rf0pid

wait

((i=0))
while ((i<=nrfs))
do
    cp stream${i}.out mls0${i}q.out
    ((i=i+1))
done

cp update_power.out mls00rf.out
cp update_throughput.out mls01rf.out

rm *.lock

touch /export/home/sybase/run/scripts/rf1.lock
touch /export/home/sybase/run/scripts/rf2.lock

dbisqlc -c "DSN=tpch" -q update_power.sql >
update_power.out &
rfspid=$!

while [ -f /export/home/sybase/run/scripts/rf1.lock ]
do
    sleep 10
done

dbisqlc -c "DSN=tpch" -q stream0.sql > stream0.out
rm -f /export/home/sybase/run/scripts/rf2.lock
wait $rfspid

((i=1))
while ((i<=nrfs))
do
    dbisqlc -c "DSN=tpch" -q stream${i}.sql > stream$
{i}.out &
    ((i=i+1))
done

dbisqlc -c "DSN=tpch" -q update_throughput${nrfs}.sql
> update_throughput.out &
rf0pid=$!

wait $rf0pid
wait

((i=0))
while ((i<=nrfs))
do
    cp stream${i}.out m2s0${i}q.out
    ((i=i+1))
done

cp update_power.out m2s00rf.out
cp update_throughput.out m2s01rf.out

dbisqlc -c "DSN=tpch" -q dbtables-syb.sql >
rdbtablest_end.out
dbisqlc -c "DSN=tpch" -q dew_cat1.sql >
dew_cat1_end.out
dbisqlc -c "DSN=tpch" -q dew_cat2.sql >
dew_cat2_end.out
dbisqlc -c "DSN=tpch" -q dew_cat3.sql >
dew_cat3_end.out

dbisqlc -q -c "DSN=tpch" check_options.sql >
check_options_end.out
```

tpch_wait.sql


```

if exists (select 1
           from SYS.SYSPROCEDURE
           where proc_name = 'tpch_wait') then
    DROP procedure tpch_wait;
end if
;

create procedure tpch_wait()
begin

    declare local temporary table t_iq_spaceused(
        mainKB      unsigned bigint,
        mainKBUsed  unsigned bigint,
        tempKB      unsigned bigint,
        tempKBUsed  unsigned bigint,
        )
        in SYSTEM on commit preserve rows;

    declare maintotal unsigned bigint;
    declare mainused  unsigned bigint;
    declare temptotal unsigned bigint;
    declare tempused  unsigned bigint;
    declare mainfree  unsigned bigint;
    declare command  varchar(255);

    select 'xp_cmdshell ''sleep 120''' into command;

    waitloop:
    LOOP
        truncate table t_iq_spaceused;
        execute immediate
            'iq utilities main into t_iq_spaceused
command statistics 30000' ;

        select          mainKB,
                       mainKBUsed,
                       tempKB,
                       tempKBUsed
tempused              into maintotal, mainused, temptotal,
                       from t_iq_spaceused;

        message 'TPCH main total: ',maintotal,' main
used : ',mainused;
        message 'TPCH temp total: ',temptotal,' temp
used : ',tempused;
        set mainfree = maintotal-mainused;
        message 'TPCH main free : ',mainfree;

        if ( mainfree > 37200000 )
            then leave waitloop;
            end if;

        select 'xp_cmdshell ''sleep 300''' into
command;
        execute immediate command;

    END LOOP waitloop;

    drop table t_iq_spaceused;
    commit;
end
;

```

Appendix F. Misc database scripts

The dbtables-syb.sql script was run to validate the correctness of the database after the database load. Three other scripts were used to extract basic information about tables and indexes from the database dew_cat1.sql, dew_cat2.sql, dew_cat3.sql.

Auditor Scripts

dbtables-syb.sql

```
=====
-- FILENAME
-- DBTABLES.SQL
-- DESCRIPTION
-- CHECK ROW COUNT AND ROW STRUCTURE/CONTENT FOR
EACH TABLE
-- IN THE TPC-H DATABASE.
--
-- GET TIMESTAMP
SELECT 'START TIME', CONVERT(CHAR(30), GETDATE(),
120);
go
-- TABLE: LINEITEM
--
SELECT COUNT(*) FROM LINEITEM;
go
SELECT * FROM LINEITEM
WHERE L_ORDERKEY IN
( 4, 26598, 148577, 387431, 56704, 517442,
600000)
AND L_LINENUMBER = 1
ORDER BY L_ORDERKEY;
go
-- TABLE: ORDERS
--
-- GET TIMESTAMP
SELECT 'TIME', CONVERT(CHAR(30), GETDATE(), 120);
go
SELECT COUNT(*) FROM ORDERS;
go
SELECT * FROM ORDERS
WHERE O_ORDERKEY IN ( 7, 44065, 287590, 411111,
483876, 599942 )
ORDER BY O_ORDERKEY;
go
-- TABLE: PART
--
-- GET TIMESTAMP
SELECT 'TIME', CONVERT(CHAR(30), GETDATE(), 120);
go
SELECT COUNT(*) FROM PART;
go
SELECT * FROM PART
WHERE P_PARTKEY IN (1,984,8743,9028,13876,17899,20000)
ORDER BY P_PARTKEY;
go
-- TABLE: PARTSUPP
--
-- GET TIMESTAMP
SELECT 'TIME', CONVERT(CHAR(30), GETDATE(), 120);
go
SELECT COUNT(*) FROM PARTSUPP;
go
SELECT* FROM PARTSUPP
WHERE PS_PARTKEY = 3398
AND PS_SUPPKEY = (SELECT MIN(PS_SUPPKEY)
FROM PARTSUPP WHERE PS_PARTKEY = 3398);
go
SELECT* FROM PARTSUPP
WHERE PS_PARTKEY =15873
AND PS_SUPPKEY = (SELECT MIN(PS_SUPPKEY)
```

```
FROM PARTSUPP WHERE PS_PARTKEY = 15873);
go
SELECT* FROM PARTSUPP
WHERE PS_PARTKEY = 11394
AND PS_SUPPKEY = (SELECT MIN(PS_SUPPKEY)
FROM PARTSUPP WHERE PS_PARTKEY = 11394);
go
SELECT* FROM PARTSUPP
WHERE PS_PARTKEY = 6743
AND PS_SUPPKEY = (SELECT MIN(PS_SUPPKEY)
FROM PARTSUPP WHERE PS_PARTKEY = 6743);
go
SELECT* FROM PARTSUPP
WHERE PS_PARTKEY = 19763
AND PS_SUPPKEY = (SELECT MIN(PS_SUPPKEY) FROM
PARTSUPP WHERE PS_PARTKEY =19763);
go
-- TABLE: SUPPLIER
--
-- GET TIMESTAMP
SELECT 'TIME', CONVERT(CHAR(30), GETDATE(), 120);
go
SELECT COUNT(*) FROM SUPPLIER;
go
SELECT * FROM SUPPLIER
WHERE S_SUPPKEY IN (83,265,492,784,901,1000)
ORDER BY S_SUPPKEY;
go
-- TABLE: CUSTOMER
--
-- GET TIMESTAMP
SELECT 'TIME', CONVERT(CHAR(30), GETDATE(), 120);
go
SELECT COUNT(*) FROM CUSTOMER;
go
SELECT * FROM CUSTOMER
WHERE C_CUSTKEY IN (832,2653,4924,7845,92016,108070)
ORDER BY C_CUSTKEY;
go
-- TABLE: NATION & REGION
--
-- GET TIMESTAMP
SELECT 'TIME', CONVERT(CHAR(30), GETDATE(), 120);
go
SELECT * FROM REGION;
go
SELECT COUNT(*) FROM NATION;
go
SELECT * FROM NATION
WHERE N_NATIONKEY IN (3,10,14,20)
ORDER BY N_NATIONKEY;
go
-- CHECK KEY VALUES
--
-- GET TIMESTAMP
SELECT 'TIME', CONVERT(CHAR(30), GETDATE(), 120);
go
if exists (select name from sysobjects where
name='MINMAX')
drop table MINMAX
go
CREATE TABLE MINMAX
(TNAME CHAR(15),
KEYMIN INTEGER,
KEYMAX INTEGER);
go
INSERT INTO MINMAX
SELECT 'LINEITEM_ORD',MIN(L_ORDERKEY),MAX(L_ORDERKEY)
FROM LINEITEM;
go
INSERT INTO MINMAX
SELECT 'LINEITEM_NBR',MIN(L_LINENUMBER),MAX
(L_LINENUMBER)
FROM LINEITEM;
go
INSERT INTO MINMAX
SELECT 'ORDERS',MIN(O_ORDERKEY),MAX(O_ORDERKEY)
FROM ORDERS;
go
INSERT INTO MINMAX
SELECT 'CUSTOMER',MIN(C_CUSTKEY),MAX(C_CUSTKEY)
FROM CUSTOMER;
```

```

go
INSERT INTO MINMAX
SELECT 'PART',MIN(P_PARTKEY),MAX(P_PARTKEY)
FROM PART;
go
INSERT INTO MINMAX
SELECT 'SUPPLIER',MIN(S_SUPPKEY),MAX(S_SUPPKEY)
FROM SUPPLIER;
go
INSERT INTO MINMAX
SELECT 'PARTSUPP_PART',MIN(PS_PARTKEY),MAX(PS_PARTKEY)
FROM PARTSUPP;
go
INSERT INTO MINMAX
SELECT 'PARTSUPP_SUPP',MIN(PS_SUPPKEY),MAX(PS_SUPPKEY)
FROM PARTSUPP;
go
INSERT INTO MINMAX
SELECT 'NATION',MIN(N_NATIONKEY),MAX(N_NATIONKEY)
FROM NATION;
go
INSERT INTO MINMAX
SELECT 'REGION',MIN(R_REGIONKEY),MAX(R_REGIONKEY)
FROM REGION;
go
SELECT * FROM MINMAX;
go
if exists (select name from sysobjects where
name='MINMAX')
drop table MINMAX
go
SELECT 'END TIME', CONVERT(CHAR(30), GETDATE(), 120);
go

```

dew_cat1.sql

```

=====
SELECT st.table_name,
       st.table_type,
       su.user_name,
       st.server_type
       from SYS.SYSTABLE st, SYS.SYSUSERPERMS su
       where creator = user_id
order by 4,1,3;

```

dew_cat2.sql

```

=====
select T.table_name      ,
       T.table_type      ,
       C.column_name     ,
       C.column_id
From   SYS.SYSTABLE T,
       SYS.SYSCOLUMN C,
       SYS.SYSDOMAIN D,
       SYS.SYSUSERPERMS SU
where  T.creator = SU.user_id
       and T.table_id = C.table_id
       and C.domain_id = D.domain_id
order by 1,2;

```

dew_cat3.sql

```

=====
SELECT index_name,T.table_name ,
       column_name ,
       index_type
from   SYS.SYSTABLE T,
       SYS.SYSCOLUMN C,
       SYS.SYSINDEX I,
       SYS.SYSUSERPERMS UP,
       SYS.SYSFILE F,
       SYS.SYSIXCOL IC
where  T.table_id = C.table_id
       and C.table_id = I.table_id
       and T.file_id = F.file_id
       and I.table_id = IC.table_id
       AND I.index_id = IC.index_id
       AND IC.column_id = C.column_id
       and T.creator = UP.user_id;

```

Appendix G. Pricing information

The following pages show actual price quotes used for pricing the hardware and software components of the measured configuration.

Company Sun Microsystems
Contact Richard Gostanian
Phone 781-442-3063
Fax
Address 1 Network Drive, Burlington MA 01803

Quotation for Software and Support

SYBASE Sales IHollie Nash
Phone: 972-687-6412
Fax: 972-687-6409

CBSS#

	Catalogue Number	Product Description	License Type	Machine	P/S	List Price Per Unit	Quantity	Discount	Extended Price	Extended Support Fees
										3 YEARS
1	11467	Sybase IQ Single App Svr, per cpu core	CP	Sun64	P	2,595	4		10,380.00	
3	98477	3 yr support Single App Svr, per cpu core				1,557	4			6,228.00
4		Discount (5% if dollar value > 25000)							0.00	
5										
6										
7										
8										
9										
10										
11										
12										

Quote Date: 5/5/05
Valid thru:

Total 16,608.00

Licence + 3 year support

Payment terms : Net 30 Days

5400 LBJ Freeway, Suite 1500, Dallas, TX 75240



Sales Quotation

Quote Number: T-US-662441-A

Quote Date: 2/14/05

Customer : SCOTT CICCONE
 SUN MICROSYSTEMS INC
 1 NETWORK DRIVE
 BURLINGTON MA 01803
 Tel / Fax : 781-442-3182 /

Sun : Holli Babb
 Sun Microsystems, Inc.
 1 Network Dr
 Burlington MA 01803
 Tel / Fax : 800-786-0404/781-442-0864

We are pleased to quote as follows:

Validity Period
60 Days

Credit Terms
Net 30 Days

Shipping Terms
Origin

Item	Product Number	Description	Qty	Unit List Price	Disc	Unit Net Price	Extended Net Price
SunFire V440 Server							
1	Config ID 3612526	Configuration: A42-XHB4C2-32ZD	1	\$46,827.00	N/A	\$38,636.55	\$38,636.55
1.1	A42-XHB4C2-32ZD	SFU/M0, 4*1.593GHz, 32GB(16 * 2GB DIMMS), 4*1466B, S10, JES3	1	\$40,995.00	15.00%	\$34,845.75	\$34,845.75
1.2	X311L	Localized Power Cord Kit North American/Asian	2	N/C	N/A	N/C	N/C
1.3	W9D-A42-3G	SunFire V440 upgrade to 3 years of Gold support.	1	\$5,832.00	35.00%	\$3,790.80	\$3,790.80

List Price Total:	\$46,827.00
-------------------	-------------

Total:	\$38,636.55
--------	-------------

YOU MUST READ THE FOLLOWING: THIS SUN QUOTATION AND ANY ORDER YOU SUBMIT FOR PRODUCTS OR SERVICES IS SUBJECT TO: (1) THE TERMS OF ANY EXISTING SALES AGREEMENT YOU HAVE WITH SUN GOVERNING THAT PRODUCT OR SERVICE, OR, IF NONE, BY SUN'S SALES TERMS FOUND AT <http://www.sun.com/sales/salesterms>, THE GENERAL TERMS OF WHICH ARE EITHER ATTACHED OR ON THE REVERSE SIDE HEREOF, AND (2) APPLICABLE SUN SERVICE LISTINGS AND STATEMENTS OF WORK FOUND AT <http://www.sun.com/service/servicelist> (1) AND (2) COLLECTIVELY BEING CALLED "SUN SALES TERMS."

ALL ORDERS MUST REFERENCE EITHER YOUR SALES AGREEMENT NUMBER OR THIS SALES QUOTATION AND BE IN CONFORMANCE WITH SUN SALES TERMS. ORDERS ARE SUBJECT TO ACCEPTANCE BY SUN EITHER THROUGH ISSUANCE OF AN ORDER ACKNOWLEDGEMENT OR DELIVERY OF THE PRODUCTS OR SERVICES. THIS QUOTATION REMAINS FIRM FOR THE PERIOD LISTED ABOVE, EXCEPT THAT SUN MAY MODIFY THIS SALES QUOTATION IF THERE IS A TYPOGRAPHICAL ERROR OR THE AVAILABILITY OF PRODUCTS, SERVICES, OR CREDIT CHANGE.